

Agrisera

Antibodies

Plant and algal research



Contact Agrisera

Catalogue antibodies
- ordering and technical support



Fanny



Jim



Joanna



Linn



Sandra

Antibody services
- custom production and support



Erika



Karolina



Magdalena

www.agrisera.com
Phone: +46 935 33 000
Catalogue antibodies: orders@agrisera.com
Antibody production: info@agrisera.com
Technical support: support@agrisera.com

Technical support

Agrisera offers you skilled technical support during all stages of antibody development and testing. We have over 30 years of experience in troubleshooting antibodies in a wide range of species and a variety of techniques.

Technical protocols

Antibody neutralization/competition assay
Protein extraction from diatoms.....
Protocol for unknown/not working antibody
WB troubleshooting including video tutorials.....
Quantitative western blot

Email: support@agrisera.com
Live chat at www.agrisera.com
Link to technical resources:
www.agrisera.com/antibody-protocols

Contents

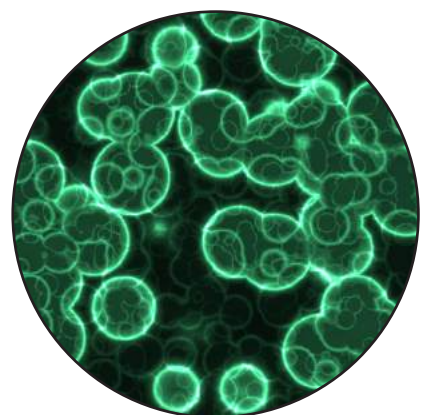
Plant antibody collection.....	4	Hormones.....	28-31
.....	Abscisic acid.....	28
Custom antibody production.....	5	Auxins.....	29
.....	Biosynthesis/regulation.....	29
Global antibodies.....	6	Brassinosteroids.....	30
.....	Cytokinins.....	30
Protein standards-quantitation.....	7	Ethylene.....	30
.....	Gibberellins.....	31
Loading control.....	7	Jasmonates.....	31
.....	Salicylic acid.....	31
Cell wall.....	7-8
.....	Mitochondria/Respiration.....	32
Compartment markers.....	8-10
Cell wall marker.....	8	Membrane transport.....	32-34
Chloroplast marker.....	8	Endomembrane system.....	32-33
Cytoplasm marker.....	9	Plasma membrane.....	33
Endoplasmic reticulum marker.....	9	Vacuolar membrane.....	34
Golgi marker.....	9
Mitochondrial marker.....	9	Nitrogen metabolism.....	34
Nuclear marker.....	10
Peroxisomal marker.....	10	Photosynthesis.....	35-42
Plasma membrane marker.....	10	ATP synthase.....	35
Plastidial marker.....	10	Biogenesis/architecture.....	36
Vacuolar marker.....	10	Carotenoid metabolism.....	36
.....	Chaperones/Transporters.....	36-37
Bioenergetics.....	12	Chlorophyll.....	37
.....	Electron transfer.....	37-38
Carbohydrates.....	12-13	GreenCut.....	38
.....	Kinases.....	38
Development biology.....	13-17	LHC.....	39
Circadian clock.....	13	Light acclimation.....	39-40
Cytoskeleton.....	14	Proteases.....	40
Flowering.....	14	PSI (Photosystem I).....	41
Ion transport.....	14-15	PSII (Photosystem II).....	41-42
Lipid metabolism.....	15	RUBISCO/Carbon metabolism.....	42
Photomorphogenesis.....	15	Sucrose metabolism.....	42
Senescence/Cell death.....	16
Signal transduction.....	16-17	Plant pathogens.....	43
.....	Fungi.....	43
DNA/RNA/cell cycle1.....	18-22	Herbicides.....	43
Cell cycle.....	18
Epigenetics/DNA methylation.....	18-19	Protein modifications.....	43
microRNA.....	19
Nuclear signalling.....	19-20	Toxins.....	43-44
RNA metabolism.....	20	Insecticides.....	43
Transcription regulation.....	20-21	Marine toxins.....	44
Translation.....	21-22	Mycotoxins.....	44
.....	Plant toxins/Other compounds.....	44
Environmental stress.....	22-27
Cold stress.....	22	Rapid Western Blotting.....	45
Drought stress.....	22-23	Detection reagents ECL.....	45
Heat shock.....	23-24	Detection reagents ELISA.....	46
Heavy metal stress.....	24
Hypoxia.....	25	Bacterial and fungal antibodies.....	46-47
Oxidative stress.....	25
Pathogen attack.....	26	TAG-antibodies.....	47-48
Salt stress.....	26-27
Wounding.....	27	Secondary antibodies.....	49-58
.....
Fermentation.....	27-28	Blocking/control.....	58
.....
Food proteins.....	28	Products in testing/Appendix.....	59

Speed up your research with the most comprehensive plant and algal antibody collection on the market.

Agrisera is a Swedish company specializing in polyclonal and monoclonal antibody production, offering an extensive collection of primary antibodies for plant and algal cell biology research and over 2000 secondary antibodies for various applications and in various quantities, all available online.

30 years in the antibody business have taught us a lot and we are proud to say there are few problems we cannot help you to solve. Agrisera is still a small company, easy to contact, and as a client you get direct access to Agrisera staff scientists who will answer all your queries promptly.

Agrisera antibodies - reactive in thousands of plant and algal species, cited in thousands of scientific articles.



Algae
 Archaeplastida
 Bryophyte
 Non-vascular plants and Vascular plants.....
 Spermatophytes
 Pteridophyte
 Gymnosperm
 Angiosperm

Arabidopsis thaliana.....
Glycine max.....
Hordeum vulgare.....
Nicotiana tabacum.....
Oryza sativa.....
Pinus sylvestris.....
Solanum tuberosum.....
Zea mays.....

And many more! Please visit www.agrisera.com/species

Custom antibodies

Agrisera offers the most customized and extensive services for antibody production. We can design the antibody project that best suits your research.

Services

Polyclonal antibody production.....
Monoclonal antibody production.....
Antigen services.....
Antibody purification.....
Antibody labelling.....

Antigen Services

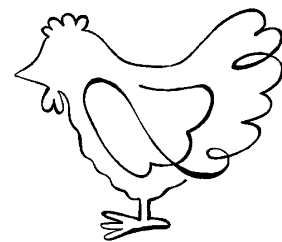
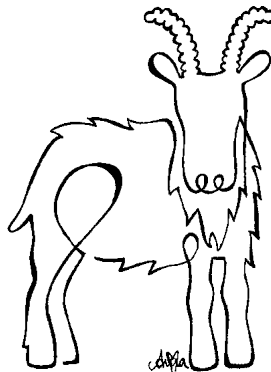
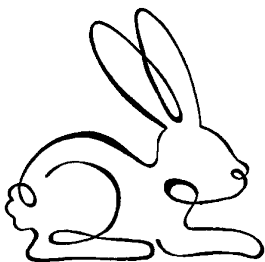
Antigen design.....
Recombinant protein expression.....
Peptide synthesis.....
Conjugation to carrier protein.....
MS analysis (peptides).....

Antibody development

Advantages

Customized deliveries.....
Educational material.....
Extensive documentation.....
Personal guidance throughout the project.....
Technical support.....

Production scheme.....	Goat.....	Rabbit.....	Rat.....	Hen
Programme length (weeks).....	15.....	15.....	15.....	12
Pre-immune serum / yolk sample.....	Yes.....	Yes.....	Yes.....	Yes
Immunizations.....	4.....	4.....	4.....	3
Production bleed (serum, ml).....	50.....	15.....	0.1.....	-
Final bleed (serum, ml).....	50.....	50.....	3.....	-
Egg collection (12 eggs).....	-.....	-.....	-.....	Yes
Purified total IgY (4 eggs).....	-.....	-.....	-.....	Yes
ELISA assay.....	Yes.....	Yes.....	Yes.....	Yes

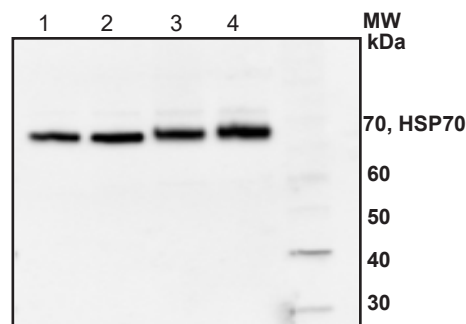


Global antibodies

Product name.....	Product no	Applications
AOX AOX positive control/quantitation standard.....	AS04 054S	WB
AtpB Beta subunit of ATP synthase, chloropl. + mitoch. (chicken antibody)....	AS03 030	WB, IL
AtpB Beta subunit of ATP synthase, chloropl. + mitoch. (rabbit antibody).....	AS05 085	BN-PAGE, IF, WB
AtpB Beta subunit of ATP synthase, mitochondrial.....	AS16 3976	BN-PAGE, IF, WB
Cat Catalase (peroxisomal marker).....	AS09 501	WB
Elip Early light-induced protein.....	AS06 147A	WB
FtsH1-11 ATP-dependent zinc metalloprotease FtsH1-11.....	AS11 1789	BN-PAGE, WB
FtsZ1 and 2 Plant cell division protein FtsZ1 and FtsZ2.....	AS09 413	WB
FtsZ2 Plant cell division protein ftsZ2.....	AS13 2651	WB
GLN1 GLN2 GS1 GS2 glutamine synthetase global antibody.....	AS08 295	WB
GlnA Glutamine synthetase.....	AS01 018	WB
GOGAT Glutamine oxoglutarate aminotransferase.....	AS07 242	WB
H+ATPase Plasma membrane H+ATPase (chicken).....	AS13 2671	WB
H+ATPase Plasma membrane H+ATPase (rabbit).....	AS07 260	IF, IL, WB
HSP70 Heat shock protein 70 cytoplasmic.....	AS08 371	IP, WB
HSP70/HSC70 Heat shock protein 70/Heat shock cognate protein 70 (serum).....	AS05 083	IP, WB
HSP70/HSC70 Heat shock protein 70/Heat shock cognate protein 70, (affi.....	AS05 083A	IP, WB
NifH Nitrogenase iron protein.....	AS01 021A	IF, IHC, WB
PEPC Phosphoenolpyruvate carboxylase.....	AS09 458	IL, WB
PEPCK PEP carboxykinase.....	AS07 241	WB
PetC Rieske iron-sulfur protein of Cyt b6/f complex.....	AS08 330	WB
PsaB PSI-B core subunit of photosystem I.....	AS10 695	WB
PsaC PSI-C core subunit of photosystem I.....	AS10 939	WB
PsbA D1 protein of PSII, C-terminal (rabbit antibody).....	AS05 084	WB
PsbA D1 protein of PSII, C-terminal (chicken antibody).....	AS01 016	WB
PsbA D1 protein of PSII, C-terminal (affinity purified).....	AS05 084A	WB
PsbA D1 protein of PSII, N-terminal.....	AS11 1786	WB
PsbA D1 protein of PSII, phosphorylated.....	AS13 2669	WB
PsbB CP47 protein of PSII.....	AS04 038	WB
PsbD D2 protein of PSII.....	AS06 146	WB
Rbcl Rubisco large subunit, form I.....	AS01 017	IL, WB
Rbcl Rubisco large subunit, form I and form II.....	AS03 037	IF, IG, TP, WB
Rbcl Rubisco large subunit, form I and form II (affinity purified).....	AS03 037A	WB
Rbcl II Rubisco large subunit, form II.....	AS15 2955	WB
Rubisco ELISA quantitation kit.....	AS15 2994	WB
SBPase Sedoheptulose-1,7-bis phosphatase.....	AS15 2873	WB
SPS Sucrose phosphate synthase, global.....	AS03 035A	WB

Application example

Product #:AS08 371



WB using Agrisera HSP70 antibody on 1µg of total protein from (1) *H. vulgare* pre heat shock leaf, (2) *H. vulgare* post heat shock leaf, (3) *Z. mays* pre heat shock total protein leaf, (4) *Z. mays* post heat shock total protein leaf.

Protein standards Quantitation

Product name	Product number	Applications
AtpB Positive control/quantitation standard	AS03 030S	WB
CP43' IsiA homolog of plant CP43 positive control/quantitation standard	AS10 111S	WB
HSP70 Positive control/quantitation standard	AS08 371S	WB
PetC Rieske iron-sulfur protein of Cyt b6/f complex, protein standard	AS08 330S	WB
PsaC Positive control/quantitation standard	AS04 042S	WB
PsbA D1 positive control/quantitation standard	AS01 016S	WB
PsbD D2 protein of PSII positive control/quantitation standard	AS09 146S	WB
Rbcl Rubisco positive control/quantitation standard	AS01 017S	WB
Rbcl II Rubisco form II positive control/quantitation standard	AS15 2955S	WB
SBP Sedoheptulose-1,7-bis phosphatase positive control/quantitation standard	AS15 2873S	WB

Loading controls

Product name	Product number	Applications
ACT Actin	AS13 2640	IF, WB
Actin-11	AS10 702	IF, WB
AtpB Beta subunit of ATP synthase, chloroplastic + mitoch (rabbit antibody)	AS05 085	BN-PAGE, IF, WB
AtpB Beta subunit of ATP synthase, mitochondrial	AS16 3976	BN-PAGE, IF, WB
FtsZ Prokaryotic cell division GTPase, cyanobacterial	AS07 217	IF, IL, WB
H3 Histone H3 (polyclonal, serum)	AS10 710	ChIp-qPCR, ICC, WB
Psb0 33 kDa of the oxygen evolving complex (OEC) of PSII	AS06 142-33	WB
PsbP 23 kDa protein of the oxygen evolving complex (OEC) of PSII	AS06 142-23	WB
PsbP 23 kDa protein of the oxygen evolving complex (OEC) of PSII	AS08 305	WB
RA Rubisco activase	AS10 700	WB
Rbcl Rubisco large subunit, form I	AS01 017	IL, WB
Rbcl Rubisco large subunit, form I and form II (50 µl)	AS03 037	IF, IG, TP, WB
RPN6 26S proteasome non-ATPase regulatory subunit 9	AS15 2832A	WB
Tubulin alpha chain	AS10 680	IF, WB
Tubulin beta chain	AS10 681	IF, WB
RPN6 26S proteasome non-ATPase regulatory subunit 9 (A.thaliana) ** In test	AS15 2845	WB

Cell wall

Product name	Product number	Applications
Acetylated glucomannan (CCRC-M170)	AS16 3226	ELISA, IF
Arabinogalactan-2 (CCRC-M133)	AS16 3115	ELISA, IHC, IF
Arabinogalactan-3 (CCRC-M85)	AS16 3133	ELISA, IHC, IF
Arabinogalactan-4 (CCRC-M78)	AS16 3231	ELISA, IHC, IF
CesA4 (IRX5) Cellulose synthase A catalytic subunit 4 [UDP-forming]	AS12 2582	WB
CesA7 (IRX3) Cellulose synthase A catalytic subunit 7 [UDP-forming]	AS12 2581	WB
CesA8 (IRX1) Cellulose synthase A catalytic subunit 8 [UDP-forming]	AS12 2580	IF, WB
Fucosylated xyloglucan (CCRC-M1)	AS16 3136	ELISA, IF, IHC
Galactomannan-1 (CCRC-M70)	AS16 3116	ELISA, IF, IHC
Galactomannan-2 (CCRC-M174)	AS16 3232	ELISA, IF, IHC
Homogalacturonan-1 (CCRC-M38)	AS16 3117	ELISA, IF, IHC
Linseed mucilage (CCRC-M141)	AS16 4038	ELISA, IF, IHC
Non-fucosylated xyloglucan-1 (CCRC-M101)	AS16 3230	ELISA, IF, IHC
Non-fucosylated xyloglucan-2 (CCRC-M88)	AS16 3233	ELISA, IF, IHC
Non-fucosylated xyloglucan-3 (CCRC-M100)	AS16 3234	ELISA, IF, IHC
Non-fucosylated xyloglucan-4 (CCRC-M58)	AS16 3235	ELISA, IF, IHC

Cell wall

Product name.....	Product number	Applications
Non-fucosylated xyloglucan-5 (CCRC-M48).....	AS16 3221	ELISA, IF, IHC
Rhamnogalacturonan-I / Arabinogalactan (CCRC-M7).....	AS16 3225	ELISA, IF, IHC
Rhamnogalacturonan-I backbone (CCRC-M35).....	AS16 3224	ELISA, IF, IHC
Rhamnogalacturonan-Ia (CCRC-M2).....	AS16 3134	ELISA, IF, IHC
Rhamnogalacturonan-Ib (CCRC-M61).....	AS16 3237	ELISA, IF, IHC
Rhamnogalacturonan-Ic (CCRC-M23).....	AS16 3236	ELISA, IF, IHC
XTH-Xet XET5 Xyloglucan xyloglucosyl transferase.....	AS08 319	ELISA, WB
Xylan-1 / Xyloglucan (CCRC-M108).....	AS16 3135	ELISA, IF, IHC
Xylan-3 (CCRC-M114).....	AS16 3227	ELISA, IF, IHC
Xylan-4 (CCRC-M154).....	AS16 3238	ELISA, IF, IHC
Xylan-5 (CCRC-M144).....	AS16 3239	ELISA, IF, IHC
Xylan-6 (CCRC-M138).....	AS16 3229	ELISA, IF, IHC
Xylan-7 (CCRC-M149).....	AS16 3228	ELISA, IF, IHC
Hardwood lignin (birch) ** In testing.....	AS16 3975	WB
Softwood lignin (spruce) ** In testing.....	AS16 3974	WB

Compartment markers Cell wall

Product name.....	Product number	Applications
CesA4 (IRX5) Cellulose synthase A catalytic subunit 4 [UDP-forming].....	AS12 2582	WB
CesA7 (IRX3) Cellulose synthase A catalytic subunit 7 [UDP-forming].....	AS12 2581	WB
CesA8 (IRX1) Cellulose synthase A catalytic subunit 8 [UDP-forming].....	AS12 2580	IF, WB
XTH-Xet XET5 Xyloglucan xyloglucosyl transferase.....	AS08 319	ELISA, WB

Compartment markers Chloroplast

Product name.....	Product number	Applications
A0 Apoplastic ascorbate oxidase.....	AS06 184	WB
CRD1 Cyanobacterial homolog of plant CHL27 cyclase.....	AS06 122	WB
Cyt c6 Thylakoid lumen cytochrome c6 protein.....	AS06 202	WB
PC Plastocyanin.....	AS06 141	IG, WB
PGL35 Plastoglobulin 35; FIB1a; FBN1a.....	AS06 116	ICC, WB
PRK ribulose-5-P-kinase Phosphoribulokinase	AS07 257	WB
PsbA D1 protein of PSII, C-terminal	AS05 084	WB
PsbA D1 protein of PSII, C-terminal (affinity purified).....	AS05 084A	WB
PsbA D1 protein of PSII, phosphorylated.....	AS13 2669	WB
RbcL Rubisco large subunit, form I and form II (affinity purified).....	AS03 037A	WB
RbcL Rubisco large subunit, form I and form II.....	AS03 037	IF, IG, TP, WB
Tic40 Inner envelope membrane translocon complex protein (chloroplast).....	AS10 709	IF, WB

Compartment markers Cytoplasm

Product name	Product number	Applications
ACT Actin (45 kDa)	AS13 2640	IF, WB
cFBPase Cytosolic fructose-1,6-bisphosphatase	AS04 043	WB
NAB1 Nucleic acid binding protein 1, Chlamydomonas (26 kDa)	AS08 333	IP, WB
Rbcl Rubisco large subunit, form I and form II (affinity purified)	AS03 037A	WB
Rbcl Rubisco large subunit, form I and form II (kDa same as above)	AS03 037	IF, IG, TP, WB
RBP40 38 kDa RNA-binding protein (40 kDa)	AS14 2820	IP, WB
SPS Sucrose phosphate synthase, maize (~130 kDa for Zea mays)	AS06 185	IL, WB
SPS Sucrose phosphate synthase, global (120-130 kDa)	AS03 035A	WB
UGPase UDP-glucose pyrophosphorylase (51.6 kDa)	AS05 086	IL, WB

Compartment markers Endoplasmic reticulum

Product name	Product number	Applications
BiP Luminal-binding protein (chicken antibody)	AS09 614	IF, WB
BiP Luminal-binding protein (goat antibody)	AS09 615	WB
BiP Luminal-binding protein (rabbit antibody)	AS09 481	ELISA, IF, IG, WB
HDEL Endoplasmic reticulum retention signal	AS10 683	IF, IG, WB
KDEL Endoplasmic reticulum retention signal	AS13 2665	IHC, WB
KDEL Endoplasmic reticulum retention signal, HRP conjugated	AS15 3016	IHC, WB

Compartment markers Golgi

Product name	Product number	Applications
ARF1 ADP-ribosylation factor 1	AS08 325	IF, IG, WB
Sec21p Gamma subunit, COP vesicles	AS08 327	IF, WB

Compartment markers Mitochondria

Product name	Product number	Applications
AOX1 Alternative oxidase 1	AS06 152	WB
AOX1/2 Plant alternative oxidase 1 and 2	AS04 054	IL, WB
COXII Cytochrome oxidase subunit II	AS04 053A	BN-PAGE, WB
COXIIb Cytochrome oxidase subunit II b	AS06 151	WB
GDC-H H protein of glycine decarboxylase complex (GDC)	AS05 074	WB
IDH Isocitrate dehydrogenase	AS06 203A	WB
SHMT Serine hydroxymethyltransferase	AS05 075	WB
VDAC1 Voltage-dependent anion-selective channel protein 1	AS07 212	BN-PAGE, IL, WB

Compartment markers Nuclear

Product name.....	Product number	Applications
H3 Histone H3 (rabbit antibody).....	AS10 710	ChIp-qPCR, ICC, WB
H3 Histone H3 (rabbit antibody, affinity purified).....	AS10 710A	ChIp-qPCR, WB
SUN1,2 (nuclear envelope protein) (<i>Arabidopsis thaliana</i>).....	AS15 2856	WB
SUN1,2 (nuclear envelope protein) (other species) ** In testing.....	AS15 2857	ICC, WB
COIL Coilin (Cajal bodies protein) ** In testing.....	AS16 3842	ICC, WB

Compartment markers Peroxisomal

Product name	Product number	Applications
Cat Catalase (peroxisomal marker).....	AS09 501	WB
DEG15 Endopeptidase (peroxisomal marker)	AS10 711	WB
GOX Glycolate oxidase 1,2,3.....	AS14 2772	WB
HPR Hydroxypyruvate reductase (peroxisomal matrix marker).....	AS11 1797	WB
Pex14p Peroxisomal marker.....	AS08 372	WB

Compartment markers Plasma membrane

Product name.....	Product number	Applications
H+ATPase Plasma membrane H+ATPase (chicken antibody).....	AS13 2671	WB
H+ATPase Plasma membrane H+ATPase (rabbit antibody).....	AS07 260	IF, IL, WB

Compartment markers Plastidial

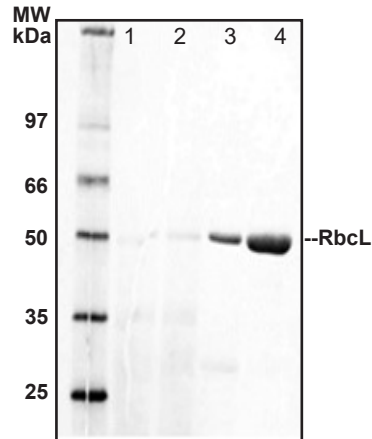
Product name.....	Product number	Applications
GOGAT Glutamine oxoglutarate aminotransferase.....	AS07 242	WB

Compartment markers Vacuolar

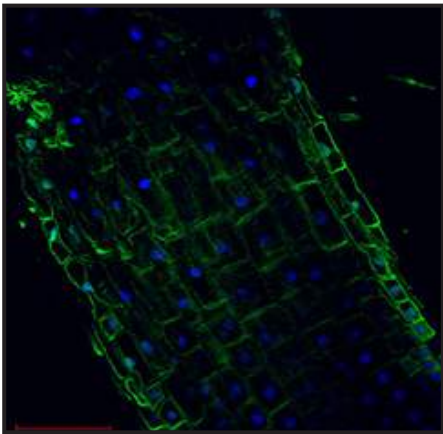
Product name.....	Product number	Applications
PR-2 GLU I Class I beta-1,3-glucanase.....	AS07 208	IL, WB
PR-3 / CHN Class I chitinase.....	AS07 207	IL, IP, WB
V-ATPase Epsilon subunit of tonoplast H+ATPase (rabbit antibody).....	AS07 213	IHC, WB
V-ATPase Epsilon subunit of tonoplast H+ATPase (goat antibody).....	AS09 577	WB
V-ATPase Epsilon subunit of tonoplast H+ATPase (affinty purified).....	AS09 577A	WB

Application examples

Product #: AS03 037

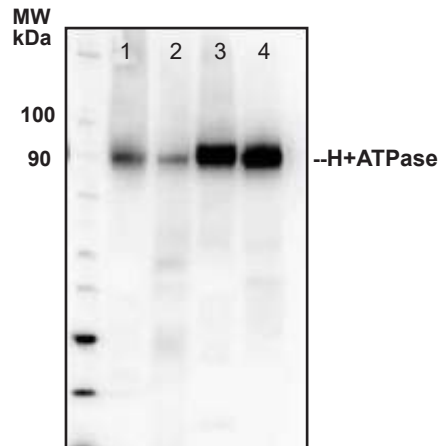


WB using Agrisera RbcL antibody on 1 µg of chlorophyll from Cryptophyte samples (1,2) and 1 µg of chlorophyll (3) or 10 µg of total protein (4) from *A. thaliana* leaves.

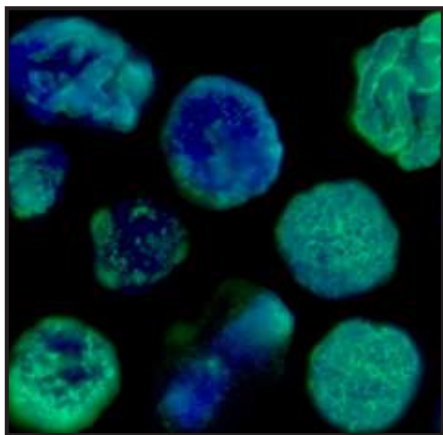


H⁺ATPase plasma membrane localization in *A. thaliana* roots. Courtesy Dr. Taras Pasternak, Freiburg University

Product #: AS07 260

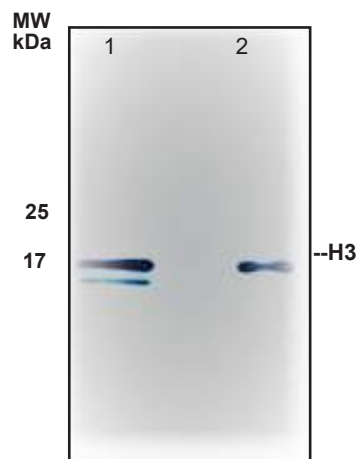


WB using Agrisera H⁺ATPase antibody on 20 µg of total protein from *A. thaliana* (1), *H. vulgare* (2), *Z. mays* (3), *N. tabaccum* plasma membrane fraction, 2.5 µg (4)



Immunocytochemical assay using Agrisera H3 antibody on excised apical parts of *V. faba* roots. Courtesy Dr. Dorota Rybaczek, Łódź University, Poland.

Product #: AS10 710



WB using Agrisera H3 antibody on 1.2 µg of *A. thaliana* chromatin-enriched fraction (1) and 3.75 µg of total protein from 4-week-old *A. thaliana* leaves (2). Courtesy of Weronika Sura and Dr. Piotr A. Ziolkowski, UAM, Poland.

Bioenergetics

Product name	Product number	Applications
AtpA Alpha subunit of ATP synthase, chloroplastic	AS08 304	IP, WB
ATPase ATP synthase, whole enzyme	AS08 370	WB
AtpB Beta subunit of ATP synthase (rice)	AS16 3834	WB
AtpB Beta subunit of ATP synthase, chloroplastic + mitochondrial	AS03 030	IL, WB
AtpB Beta subunit of ATP synthase, chloroplastic + mitochondrial	AS05 085	BN-PAGE, IF, WB
AtpC Gamma subunit of ATP synthase, chloroplastic	AS08 312	WB
AtpD CF1 delta subunit of ATP synthase, Affinity purified	AS10 1590	WB
AtpD CF1 delta subunit of ATP synthase, Serum	AS10 1591	WB
AtpE Epsilon subunit of ATP synthase	AS10 1586	WB
AtpF CF0I subunit of ATP synthase	AS10 1604	WB
AtpG ATPsynthase subunit II b', chloroplastic	AS09 457	WB
AtpH ATP synthase subunit c, chloroplastic	AS05 071	WB
AtpH ATP synthase subunit c, chloroplastic	AS09 591	WB
AtpI CFoIV subunit of ATP synthase	AS10 1583	WB
Ca2+-ATPase Calmodulin-stimulated calcium-ATPase	AS09 486	ELISA, WB
NDPK Nucleoside diphosphate kinase	AS08 302	WB
PAB Protein in chloroplast atpase biogenesis	AS15 2833	WB
AtpB Beta subunit of ATP synthase, mitochondrial	AS16 3976	BN-PAGE, IF, WB

Carbohydrates

Product name	Product number	Applications
3-hydroxybutyrate dehydrogenase	AS09 562	ELISA, IF, IHC, WB
3-hydroxybutyrate dehydrogenase, Affinity purified	AS09 564	ELISA, IF, IHC, WB
3-hydroxybutyrate dehydrogenase, Biotin conjugated	AS09 563	ELISA, IF, IHC, WB
ACC synthase 7 1-aminocyclopropane-1-carboxylate synthase 7	AS14 2774	WB
ACCase subunit beta Acetyl-coenzyme A, carboxylase (subunit beta)	AS15 2880	WB
ADGP ADP-glucose pyrophosphorylase	AS11 1739	WB
AKIN β gamma	AS09 463	WB
AKIN10 SNF1-related protein kinase catalytic subunit alpha KIN10	AS10 919	WB
AKIN11 SNF1-related protein kinase catalytic subunit alpha KIN11	AS10 920	WB
AKINB2 SNF1-related protein kinase regulatory subunit beta-2	AS09 462	WB
AKINB3 SNF1-related protein kinase regulatory subunit beta-3	AS15 2859	WB
ALD Fructose-1,6 bisphosphate aldolase	AS08 294	WB
Alpha-mannosidase	AS09 452	ELISA, IF, IHC, WB
Alpha-mannosidase, Affinity purified	AS09 650	ELISA, IF, IHC, WB
Alpha-mannosidase, Biotin conjugated	AS09 453	ELISA, IF, IHC, WB
AMY Alpha-amylase	AS10 712	WB
BAM Beta-amylase, Biotin conjugated	AS09 380	ELISA, IF, IHC, WB
BAM1 Beta amylase 1 (chloroplastic)	AS15 2895	WB
beta-1,4-glucosidase (hyperthermophilic enzyme)	AS15 3093	WB
Biotin carboxyl carrier subunit of chloroplast ACCase	AS15 2881	WB
cFBPase Cytosolic fructose-1,6-bisphosphatase	AS04 043	WB
endo-beta-1,4 xylanase (hyperthermophilic enzyme)	AS15 3087	WB
Exo1 Exoglucanase isoenzyme 1	AS08 322	ELISA, WB
FBA Fructose-bisphosphate aldolase class 2	AS13 2731	WB
FnCel5A Endo-beta-1,4 glucanase (hyperthermophilic enzyme)	AS15 3094	WB
Fucose	AS07 268	IL, WB
GAPC1/2 Glyceraldehyde-3-phosphate dehydrogenase	AS15 2894	WB
GAPC2 Glyceraldehyde-3-phosphate dehydrogenase	AS13 2727	WB
GLUC Beta-glucosidase	AS09 449	ELISA, IF, IHC, WB
GLUC Beta-glucosidase, Affinity purified	AS09 451	ELISA, IF, IHC, WB
GLUC Beta-glucosidase, Biotin conjugated	AS09 450	ELISA, IF, IHC, WB
Glucan endo-1,3-beta-glucosidase	AS15 2890	WB
GLYR Glyoxylate reductase	AS09 542	ELISA, IF, IHC, WB
GLYR Glyoxylate reductase, Affinity purified	AS09 544	ELISA, IF, IHC, WB

Carbohydrates

Product name	Product number	Applications
GLYR Glyoxylate reductase, Biotin conjugated	AS09 543	ELISA, IF, IHC, WB
HXK1 Hexokinase 1	AS12 2601	WB
ICL Isocitrate lyase	AS09 500	ELISA, WB
MDH Malate dehydrogenase (cytoplasmic)	AS13 2706	WB
MDH2 Malate dehydrogenase 2 (mitochondrial)	AS15 3064	IP, WB
MDH4 Malate dehydrogenase 4 (cytoplasmic)	AS15 3065	WB
Oxalate oxidase	AS09 518	ELISA, IF, IHC, WB
Oxalate oxidase, Biotin conjugated	AS09 519	ELISA, IF, IHC, WB
PEPC Phosphoenolpyruvate carboxylase	AS09 458	IL, WB
PGM1 Phosphoglucomutase (cytoplasmic 1)	AS15 3066	WB
PPDK Pyruvate orthophosphate dikinase	AS13 2647	WB
Ramy 3D Alpha-amylase isozyme 3D	AS10 716	WB
SBPase Sedoheptulose-1,7-bis phosphatase	AS15 2873	WB
SPS Sucrose phosphate synthase (maize)	AS06 185	IL, WB
SPS Sucrose phosphate synthase, global	AS03 035A	WB
SPSA1 Sucrose phosphate synthase isoform A1	AS15 2995	WB
SPSC Sucrose phosphate synthase isoform C	AS15 2997	WB
SUS1 Sucrose synthase 1	AS15 2830	WB
TPS1 Trehalose-6-phosphate synthase 1	AS12 2635	WB
UAGPase UDP-GlcNAc pyrophosphorylase	AS14 2829	WB
UGPase UDP-glucose pyrophosphorylase (cytoplasm marker)	AS05 086	IL, WB
UGPase UDP-glucose pyrophosphorylase (cytoplasm marker) (H. vulgare)	AS14 2813	WB
Xylose	AS07 267	WB
ARP4 Actin-related protein 4 ** In testing	AS14 2817	WB
ATUAP1 UDP-N-acetylglucosamine diphosphorylase 2 ** In testing	AS15 2829	WB
BAM3 Beta amylase 3 ** In testing	AS15 2896	WB
FUM Fumarase ** In testing	AS16 3966	WB
HXK1 Hexokinase 1 (Chlamydomonas) ** In testing	AS16 4083	WB
PEPC1 Phosphoenolpyruvate carboxylase isoform 1 ** In testing	AS15 2993	IL, WB
RIN4 RPM1-interacting protein 4 ** In testing	AS15 2893	WB
SPSA2 Sucrose phosphate synthase isoform A2 ** In testing	AS15 2996	WB
Sucrose synthase 4 ** In testing	AS11 1796	WB
SUS4 Sucrose synthase 4 ** In testing	AS13 2748	WB

Developmental biology Circadian clock

Product name	Product number	Applications
CCA1 Circadian clock associated 1	AS13 2659	WB
DET1 Regulator of the proteasomal degradation of LHY	AS15 3082	WB
GI Gigantea	AS12 1864A	WB
LHY Late elongated hypocotyl	AS13 2661	WB
ZTL (ADO1) Zeitlupe (Adagio protein 1)	AS13 2662	WB
CHE CCA1 hiking expedition ** In testing	AS13 2660	WB
LUX Transcription factor LUX ** In testing	AS16 4106	WB
TOC1 Timing of CAB expression 1 ** In testing	AS13 2646	WB
TOC1 Timing of CAB expression 1 (other species) ** In testing	AS14 2823	WB

Developmental biology Cytoskeleton

Product name	Product number	Applications
ACT Actin	AS13 2640	IF, WB
ACT Actin (monoclonal)	AS16 3141	IHC, WB
ACT 1,3,4,12 Actin 1, 3, 4, 12	AS16 3139	WB
ACT 2,8,11 Actin 2, 8, 11	AS16 3140	IHC, WB
Actin-11	AS10 702	IF, WB
FtsZ Procaryotic cell division GTPase (cyanobacterial)	AS07 217	IF, IL, WB
FtsZ1 and 2 Plant cell division protein FtsZ1 and FtsZ2	AS09 413	WB
FtsZ2 Plant cell division protein ftsZ2	AS13 2651	WB
MPK4 Mitogen-activated protein kinase 4	AS12 2107	WB
PRO1 Profilin-1	AS16 3210	IHC, WB
PRO1,2 Profilin-1,2	AS16 3142	IHC, WB
PRO4,5 Profilin-4,5	AS16 3143	IHC, WB
Tubulin alpha chain	AS10 680	IF, WB
Tubulin beta chain	AS10 681	IF, WB

Developmental biology Flowering

Product name	Product number	Applications
CO Constans (goat)	AS16 3160	WB
FT/TSF Flowering locus T and twin sister of FT	AS06 198	WB
GI Gigantea	AS12 1864A	WB
SOC1 Suppressor of constans overexpression 1	AS12 1856	WB
ZTL (AD01) Zeitlupe (Adagio protein 1)	AS13 2662	WB
CO Constans (chicken) ** In testing	AS16 3958	WB

Developmental biology Ion transport

Product name	Product number	Applications
AKT1 Potassium channel AKT1	AS09 516	WB
AtpB Beta subunit of ATP synthase, chloroplastic + mitoch (chicken antibody)	AS03 030	IL, WB
AtpB Beta subunit of ATP synthase, chloroplastic + mitoch (rabbit antibody)	AS05 085	BN-PAGE, IF, WB
AtpB Beta subunit of ATP synthase, mitochondrial	AS16 3976	BN-PAGE, IF, WB
Ca ²⁺ -ATPase Calmodulin-stimulated calcium-ATPase	AS09 486	ELISA, WB
FER Ferritin (plant)	AS10 674	WB
Fer1 Ferritin 1 (pre-apoferritin)	AS06 126	WB
Fer2 Ferritin 2	AS06 196	WB
Ferritin 1-2 (plant)	AS15 2898	WB
FOX1 Plasma membrane ferroxidase FLP1	AS06 120	IF, WB
KC1 Potassium channel KAT3	AS09 515	WB
KrP Kelch repeat-containing protein / galactose oxidase (At3g07720)	AS14 2764	WB
Lysine-tRNA ligase	AS15 2899	WB
Na ⁺ /H ⁺ antiporter, sodium/hydrogen exchanger	AS09 484	ELISA, WB
Pht1-1/2 Root phosphate transporter isoform 1-1 and 1-2	AS08 321	ELISA, WB
Pht1-6 Root phosphate transporter isoform 1-6	AS08 320	ELISA, WB
TKL1 Transketolase (chloroplastic)	AS15 2903	IP, WB
Tom 9 Mitochondrial import receptor subunit TOM9	AS15 2902	WB
V-ATPase Epsilon subunit of tonoplast H ⁺ ATPase	AS07 213	IHC, WB
V-ATPase Epsilon subunit of tonoplast H ⁺ ATPase	AS09 577	WB
V-ATPase Epsilon subunit of tonoplast H ⁺ ATPase (affinity purified)	AS09 577A	WB

Developmental biology Ion transport

Product name	Product number	Applications
VDAC1 Voltage-dependent anion-selective channel protein 1	AS07 212	BN-PAGE, IL, WB
Zip7 Zinc transporter protein Zip7	AS08 318	ELISA, WB
Kelch repeat protein (<i>Chlamydomonas</i>) ** In testing	AS14 2761	WB

Developmental biology Lipid metabolism

Product name	Product number	Applications
Alkaline lipase (glyoxysomal lipase)	AS10 698	WB
CrPDAT1 Phospholipid: diacylglycerol acyltransferase	AS12 1875	WB
EDS1 Enhanced disease susceptibility 1	AS13 2751	WB
LOX Lipoxygenase	AS06 128	WB
LOX Lipoxygenase (affinity purified)	AS06 128A	WB
LOX2 Lipoxygenase 2	AS08 340	ELISA, WB
LOX-C Lipoxygenase (chloroplasmic)	AS07 258	WB
Plastid acyl-ACP desaturase	AS13 2668	WB
PLD Phospholipase D	AS09 556	ELISA, IF, IHC, WB
PLD Phospholipase D (affinity purified)	AS09 558	ELISA, IF, IHC, WB
PLDA1/2 Phospholipase D alpha 1/2	AS12 2364	IL, WB

Developmental biology Photomorphogenesis

Product name	Product number	Applications
FT/TSF Flowering locus T and twin sister of FT	AS06 198	WB
HY5 Protein long hypocotyl 5	AS12 1867	WB
Melatonin (rabbit antibody)	AS09 596	ELISA
Melatonin (rat antibody)	AS09 597	ELISA
PHOT1 Phototropin-1	AS10 720	WB
PHOT2 Phototropin-2	AS10 721	WB
PhyA Phytochrome A	AS07 220	WB
PIF3 Phytochrome interacting factor 3 (goat antibody)	AS16 3954	WB
PIF4 Phytochrome interacting factor 4 (goat antibody)	AS16 3955	WB
PIF5 Phytochrome interacting factor 5	AS12 2112	WB
PLD Phospholipase D	AS09 556	ELISA, IF, IHC, WB
PLD Phospholipase D (affinity purified)	AS09 558	ELISA, IF, IHC, WB
RGA DELLA protein RGA	AS11 1630	WB
VRN2 Vernalization protein 2	AS08 341	ELISA, WB
CRY1 Cryptochrome 1	AS16 3933	WB
CRY2 Cryptochrome 2 ** In testing	AS16 3934	WB
PhyB Phytochrome B (rabbit) ** In testing	AS16 3158	WB
PhyB Phytochrome B (goat) ** In testing	AS16 3956	WB
PIF3 Phytochrome interacting factor 3 (rabbit antibody) ** In testing	AS16 3156	WB
SPA1 Suppressor of PhyA-105 ** In testing	AS16 3147	WB

Developmental biology Senescence/Cell death

Product name	Product number	Applications
ACD1 Accelerated cell death 1	AS11 1783	WB
EIN2 Ethylene insensitive 2	AS12 1865	WB
GLN1 GLN2 GS1 GS2 glutamine synthetase global antibody	AS08 295	WB
GLN2 GS2, chloroplastic form of glutamine synthetase	AS08 296	WB
KARI Ketol-acid reductoisomerase	AS15 2879	WB
MKK2 Mitogen-activated protein kinase kinase 2	AS15 2905	WB
PLD Phospholipase D	AS09 556	ELISA, IF, IHC, WB
PLD phospholipase D, Affinity purified	AS09 558	ELISA, IF, IHC, WB
PP2A Serine/threonine protein phosphatase 2A 59 kDa regulatory subunit B'	AS13 2747	IL, WB
SAG12 Senescence-specific cysteine protease SAG12	AS14 2771	WB
SAM1-4 S-adenosylmethionine synthase	AS16 3148	WB
HMT Homocysteine S-methyltransferase ** In testing	AS16 3837	WB
SOBIR1 Suppressor of BIR1 (rabbit) ** In testing	AS16 3204	IP, WB
SOBIR1 Suppressor of BIR1 (chicken) ** In testing	AS16 3959	IP, WB

Developmental biology Signal transduction

Product name	Product number	Applications
14.3.3C 14.3.3-like protein C	AS08 317	ELISA, WB
14-3-3 GRF General regulatory element	AS12 2119	IL, WB
ACC synthase 7 1-aminocyclopropane-1-carboxylate synthase 7	AS14 2774	WB
ACCase subunit beta Acetyl-coenzyme A, carboxylase (subunit beta)	AS15 2880	WB
AHK2 Histidine kinase 2	AS12 2113	WB
AKIN β gamma	AS09 463	WB
AKIN10 SNF1-related protein kinase catalytic subunit alpha KIN10	AS10 919	WB
AKIN11 SNF1-related protein kinase catalytic subunit alpha KIN11	AS10 920	WB
AKINB1 SNF1-related protein kinase regulatory subunit beta-1	AS09 460	WB
AKINB2 SNF1-related protein kinase regulatory subunit beta-2	AS09 462	WB
AKINB3 SNF1-related protein kinase regulatory subunit beta-3	AS15 2859	WB
AKING1 SNF1-related protein kinase regulatory subunit gamma 1	AS09 613	WB
AP2 Floral homeotic protein APETALA 2	AS12 2609	WB
ATG5 Autophagy-related protein 5	AS15 3060	WB
ATG8 Autophagy-related protein	AS14 2769	IL, WB
ATG8A-I Autophagy-related protein 8A-I isoforms	AS14 2811	WB
Calcineurin/EF-hand motif	AS13 2666	WB
CDPK (1,2,3,4,7,8,10,11,14,20,25,30,32) Calcium-dependent protein kinase	AS13 2754	WB
CHIT3 Chitinase 3	AS15 2888	WB
CHIT8 Chitinase 8	AS15 2889	WB
CNX1/2 CALNEXIN HOMOLOG 1/2	AS12 2365	WB
COI1 Coronate insensitive 1 (rabbit antibody)	AS12 2637	WB
COI1 Coronate insensitive 1 (mouse antibody)	AS16 3844	WB
CPK-EF Calcium-dependent protein kinase EF domain	AS11 1807	WB
CPN60A1 Chaperonin 60 subunit alpha 1, chloroplastic	AS12 2613	WB
DRP5B Dynamin related protein 5B	AS12 2634	WB
FIE Fertilization-independent endosperm	AS12 2616	WB
GID2 F-BOX protein GID2 (SLEEPY 1)	AS13 2638	WB
GPA1 Guanine nucleotide-binding protein subunit alpha 1	AS12 2370	WB
GPA1 Guanine nucleotide-binding protein subunit alpha 1	AS16 3939	WB
HXK1 Hexokinase 1	AS12 2601	WB
HY1 Heme Oxygenase 1	AS12 2636	WB
HXK1 Hexokinase 1 (<i>Chlamydomonas</i>)	AS16 4083	WB
KrP Kelch repeat-containing protein / galactose oxidase (At3g07720)	AS14 2764	WB
LSD1 Lesion simulating disease 1 (chicken antibody)	AS12 2104	WB
LSD1 Lesion simulating disease 1 (rabbit antibody)	AS13 2746	WB
MKKK18 Mitogen-activated protein kinase 18	AS13 2673	WB

Developmental biology Signal transduction

Product name	Product number	Applications
MPK6 Mitogen-activated protein kinase 6	AS12 2633	WB
MKK2 Mitogen-activated protein kinase kinase 2	AS15 2905	WB
MYC2 Transcription factor MYC2	AS12 1869	WB
NRT1.1 Nitrate transporter 1.1	AS12 2611	IL, WB
NRT2.1 Nitrate transporter 2.1	AS12 2612	WB
PHOT1 Phototropin-1	AS10 720	WB
PHOT2 Phototropin-2	AS10 721	WB
PLDA1/2 Phospholipase D alpha 1/2	AS12 2364	IL, WB
PP2A Serine/threonine protein phosphatase 2A 59 kDa regulatory subunit B'	AS13 2747	IL, WB
PPDK Pyruvate orthophosphate dikinase	AS13 2647	WB
PR-2 GLU I Class I beta-1,3-glucanase	AS07 208	IL, WB
PR-2 Pathogenesis-related protein 2	AS12 2366	WB
PR-3 / CHN Class I chitinase	AS07 207	IL, IP, WB
PR-4 Pathogenesis-related protein 4 (Arabidopsis thaliana)	AS12 2369	WB
P-Tyr Phosphotyrosine	AS10 705	IF, IHC, IP, WB
RACK1A Receptor for activated C kinase 1A	AS11 1810	WB
RCD1 Radical cell death 1	AS12 2602	IP, WB
RE N-terminal arginylation	AS15 3050	Dot
SAM1-4 S-adenosylmethionine synthase	AS16 3148	WB
SnRK2.2, SnRK2.3, SnRK2.6 Ser/Thr-protein kinase SnRK	AS14 2783	WB
SPY Spindly (100 µg)	AS13 2637	WB
SRK2E Ser/Thr-protein kinase SnRK2.6	AS13 2635	IP, PdA, WB
SUMO1 Small ubiquitin-like modifier protein 1	AS08 308	WB
SUMO3 Small ubiquitin-like modifier protein 3	AS08 349	WB
TM2 Tobacco mosaic virus resistance-2	AS15 3062	WB
TOR Target of rapamycin	AS12 2608	WB
TPS1 Trehalose-6-phosphate synthase 1	AS12 2635	WB
UAGPase UDP-GlcNAc pyrophosphorylase	AS14 2829	WB
U-box domain-containing protein 12	AS13 2728	WB
UBQ11 Ubiquitin	AS08 307	WB
UBQ11 Ubiquitin protein (positive control)	AS10 307S	WB
AGB1 Guanine nucleotide-binding protein beta 1 ** In testing	AS16 3937	WB
AGB1/AGG1 Guanine nucleotide-binding protein subunit beta 1 and gamma 1 **	AS16 3938	WB
AGB1 Guanine nucleotide-binding protein beta 1 ** In testing	AS15 3101	WB
ARP4 Actin-related protein 4 ** In testing	AS14 2817	WB
ATG7 ** In testing	AS15 3061	WB
CBL Calcineurin B-like protein ** In testing	AS16 4033	WB
CBL4 Calcineurin B-like protein 4 (SOS3) ** In testing	AS12 2607	WB
CIPK24 CBL-interacting Serine/Threonine-protein kinase 24 (SOS2) **Under dev.	AS12 2606	WB
CLV1 Receptor protein kinase CLAVATA1 ** In testing	AS11 1779	WB
CPK-t2 Calcium-dependent protein kinase active site ** In testing	AS13 2667	WB
DREB1A Dehydration-responsive element-binding protein 1A ** Under dev.	AS16 3965	WB
DREB2A Dehydration-responsive element-binding protein 2A ** In testing	AS12 2368	WB
GN Gnom ** In testing	AS16 3980	WB
LFY Leafy ** In testing	AS16 3990	WB
MKK1 Mitogen-activated protein kinase kinase 1 ** In testing	AS15 2904	WB
MKK4 Mitogen-activated protein kinase kinase 4 ** In testing	AS15 2906	WB
MKK5 Mitogen-activated protein kinase kinase 5 ** In testing	AS15 2907	WB
NHX7 Sodium hydrogen exchanger 7 (SOS1) ** In testing	AS12 2605	WB
PR-4 Pathogenesis-related protein 4 ** In testing	AS14 2810	WB
PR-5 Pathogenesis-related protein 5 ** In testing	AS15 2858	WB
PR-5 Pathogenesis-related protein 5 (A.thaliana) ** In testing	AS12 2373	WB
PSY Phytoene synthase ** In testing	AS16 3991	WB
RACK1 Receptor for activated C kinase 1 ** In testing	AS16 3940	WB
RAPTOR ** In testing	AS15 3049	WB
RIN4 RPM1-interacting protein 4 ** In testing	AS15 2893	WB
SMG1 Serine/threonine-protein kinase SMG1 ** In testing	AS14 2773	WB
STO Salt tolerance protein ** In testing	AS16 3986	WB
VAS1 Reversal of SAV3 phenotype 1 ** In testing	AS13 2663	WB

DNA/RNA/cell cycle Cell cycle

Product name	Product number	Applications
ARC5 Dynamin-like protein ARC5	AS13 2676	WB
ASY1 Asynaptic phenotype protein 1	AS08 323	ELISA, IL, WB
ASY1 Asynaptic phenotype protein 1 monoclonal antibody	AS08 338	ELISA, WB
CDC2 Cell-division-cycle kinase 2	AS06 153	IL, WB
CENH3 Centromere specific histone H3 variant	AS12 2225-100	IHC, WB
Phly DNA photolyase (At4g25290)	AS15 2864	WB
Phly DNA photolyase (At4g25290) (N-terminal part)	AS15 2863	WB
RBR1 Retinoblastoma related protein	AS11 1627	IP, WB
Rhodanese/cell cycle control phosphatase superfamily protein	AS15 2900	WB
LOB domain-containing protein 6 ** In testing	AS11 1840	WB

DNA/RNA/cell cycle Epigenetics/ DNA methylation

Product name	Product number	Applications
5-fC 5-formylcytosine	AS16 3165	DIP, ELISA
5-hmC 5-hydroxymethylcytosine (monoclonal)	AS16 3164	DIP, Dot, ELISA
5-hmC 5-hydroxymethylcytosine (polyclonal)	AS16 3166	DIP, Dot, ELISA
5-mC 5-methylcystosine (monoclonal antibody for MeDIP/IF)	AS16 3162	DIP, IF
5-mC 5-methylcystosine (monoclonal)	AS16 3161	Dot, FISH, IF, IP,
5-mC 5-methylcystosine (monoclonal, clone 33D3)	AS16 3163	DIP, Dot, IF
Acetylated Lysine	AS15 3018	ICC, IF, IP, WB
Acetylated Lysine (25 µl)	AS10 707-25	ICC, IF, IHC, IP, WB
H2A.XS139p H2A.X phosphorylated serine 139	AS16 3199	Dot, IF, WB
H3 Histone 3 core (monoclonal)	AS16 3197	ChIP, WB
H3K18me1 Histone H3 monomethylated Lys18	AS16 3181	ChIP, Dot, IF, WB
H3K18me2 Histone H3 dimethylated Lys18	AS16 3182	ChIP, Dot, IF, WB
H3K18me3 Histone H3 trimethylated Lys18	AS16 3183	ChIP, Dot, IF, WB
H3K27ac Histone H3 acetylated lysine 27 (ChIP grade)	AS16 3195	ChIP, Dot, IF, PA, WB
H3K27me3 Histone H3, trimethylated lysine 27 (H3K27me3)	AS16 3193	ChIP, Dot, IF, PA, WB
H3K27me3S28p Histone H3 trimethylated Lys27, p Ser28	AS16 3184	ChIP, Dot, IF, WB
H3K36me3 Histone H3 trimethylated lysine 36 (ChIP grade)	AS16 3196	ChIP, Dot, IF, PA, WB
H3K37me1 Histone H3 monomethylated Lys37	AS16 3186	Dot, WB
H3K4me1T6p Histone H3 monomethylated Lys4, p Thr6	AS16 3171	ChIP, Dot, IF, IHC, WB
H3K4me3 Histone H3, trimethylated lysine 4 (H3K4me3)	AS16 3190	ChIP, Dot, IF, PA, WB
H3K4me3T6p H3 trimethylated Lys4, p Thr6	AS16 3172	ChIP, Dot, IF, IHC, WB
H3K56me1 Histone H3 monomethylated Lys56	AS16 3187	ChIP, Dot, IF, WB
H3K56me3 Histone H3 trimethylated Lys56	AS16 3188	ChIP, Dot, IF, WB
H3K9ac Histone H3, acetylated lysine 9	AS16 3198	ChIP, Dot, IF, WB
H3K9me2 Histone H3 dimethylated lysine 9	AS16 3194	ChIP, Dot, IF, WB
H3R17me2(asym) Histone H3 asym-dimethyl Arg17	AS16 3180	ChIP, IF, WB
H3R2me1 Histone H3 monomethylated Arg2	AS16 3167	WB
H3R2me2(sym)K4me2 Histone H3 sym-dimethylated Arg2, dimethyl Lys4	AS16 3185	ChIP, Dot, IF, WB
H3R8me2(asym) Histone H3 asym-dimethylated Arg8	AS16 3177	ChIP, IF, IHC, WB
H3R8me2(sym) H3 Histone 3 sym-dimethylated Arg8	AS16 3178	ChIP, WB
H3S10p Histone H3 p Ser10 (affinity purified)	AS16 3635	ChIP, Dot, IF, WB
H3S10p Histone H3 p Ser10 (serum)	AS16 3636	ChIP, Dot, IF, IP, WB
H3S10pT11p Histone H3 p Ser10, p Thr11	AS16 3179	ChIP, IF, IHC, WB
H3T3pK4ac Histone H3 ac Lys4, p Thr3	AS16 3170	ChIP, Dot, IF, IHC, WB
H3T3pK4me1 Histone H3 p Thr3, monomethylated Lys4	AS16 3168	Dot, IF, IHC, WB
H3T3pK4me2 Histone H3 dimethylated Lys4, p Thr3	AS16 3169	ChIP, IF, IHC, WB

DNA/RNA/cell cycle Epigenetics/ DNA methylation

Product name	Product number	Applications
H3T6p Histone H3 p Thr6	AS16 3173	ChIP, Dot, IF, IHC, WB
H3T6pK9me1 Histone H3 methylated at Lys9 (K9)	AS16 3174	ChIP, Dot, IF, IHC, WB
H3T6pK9me2 Histone H3 dimethylated Lys9, p Thr6	AS16 3175	ChIP, IF, IHC, WB
H3T6pK9me3 Histone H3 trimethylated Lys9, p Thr6	AS16 3176	ChIP, Dot, IF, IHC, WB
H4K16ac Histone H4 acetylated Lys16	AS16 3189	ChIP, Dot, IF, IHC, WB
Methylated Lysine	AS15 3021	ELISA, IHC, IP, WB
m6A N6-methyladenosine (monoclonal)	AS17 4120	Dot, RIP

DNA/RNA/cell cycle MicroRNA

Product name	Product number	Applications
G01 Argonaute 1	AS09 527	WB
AG01 Argonaute 1 (<i>Chlamydomonas</i>)	AS14 2776	WB
AG010 Argonaute 10	AS15 3071	WB
AG02 Argonaute 2	AS13 2682	WB
AG04 Argonaute 4	AS09 617	ICC, IP, WB
AG05 Argonaute 5	AS10 671	IP, WB
AG06 Argonaute 6	AS10 672	WB
AG09 Argonaute 9	AS10 673	IP, WB
CBP20 Nuclear cap-binding protein subunit 2	AS09 530	IP, WB
CBP80 Nuclear cap-binding protein subunit 1	AS09 531	RIP, WB
CCS Chloroplastic copper chaperone for SOD	AS07 219	WB
CSD2 Chloroplastic Cu/Zn superoxide dismutase	AS06 170	WB
DCL1 Dicer-like protein 1	AS12 2102	RIP, WB
DCL3 Dicer-like protein 3	AS12 2103	WB
HEN1 HUA ENHANCER 1	AS15 3095	WB
HYL1 Hyponastic leave phenotype ds-RNA binding protein	AS06 136	RIP, WB
KARI Ketol-acid reductoisomerase	AS15 2879	WB
PELOTA Protein pelota homolog	AS16 3984	WB
RPL2 Ribosomal protein L2 (chloroplastic)	AS15 2876	WB
RPL4 ribosomal protein L4 (chloroplastic)	AS15 3076	WB
RPS1 Ribosomal protein S1 (chloroplastic)	AS15 2875	WB
RPS7 Ribosomal protein S7 (chloroplastic)	AS15 2877	WB
SE Serrate RNA effector molecule (rabbit)	AS09 532A	IL, RIP, WB
SE Serrate RNA effector molecule (chicken antibody)	AS15 2836	WB

DNA/RNA/cell cycle Nuclear signaling

Product name	Product number	Applications
H8-Hydroxyguanosine DNA/RNA oxidative damage	AS10 708-100AP	ELISA, IHC-Fr-P
H1 Histone H1	AS11 1801	ICC, WB
H3 Histone H3 (affinity purified)	AS10 710A	ChIp-qPCR, WB
H3 Histone H3 (chicken antibody)	AS15 2855	WB
H3 Histone H3 (rabbit antibody)	AS10 710	ChIp-qPCR, ICC, WB
HDT1 Histone deacetylase	AS11 1792	WB
HDT3 Histone deacetylase HDT3	AS16 3968	IP, WB
HTA9 Probable histone H2A variant 3	AS10 718	WB

DNA/RNA/cell cycle Nuclear signaling

Product name	Product number	Applications
HTR12 Histone H3-like centromeric protein	AS12 2226-100	ELISA, IHC, WB
LexA SOS function regulatory protein	AS12 2614	WB
PARP2 Poly [ADP-ribose] polymerase 2	AS16 3838	WB
PEL1 Pelota	AS11 1798	WB
SUN1,2 (nuclear envelope protein) (Arabidopsis thaliana)	AS15 2856	WB
COIL1 Coilin (Cajal bodies protein) ** In testing	AS16 3842	ICC, WB
PARP-1,2 Poly [ADP-ribose] polymerase 1,2 ** In testing	AS15 3012	ICC
SUN1,2 (nuclear envelope protein) (other species) ** In testing	AS15 2857	ICC, WB

DNA/RNA/cell cycle RNA metabolism

Product name	Product number	Applications
PRP39a Pre-mRNA-processing factor 39	AS14 2784	WB
PRP40B Pre-mRNA-processing protein 40B	AS14 2785	WB
U1 snRNP 70 kDa U1 small nuclear ribonucleoprotein 70 kDa ** Under dev	AS14 2778	WB
U1 snRNP protein A U1 small nuclear ribonucleoprotein A ** In testing	AS14 2777	WB

DNA/RNA/cell cycle Transcription regulation

Product name	Product number	Applications
A12.2 RNA polymerase I subunit (homolog of Pol II Rpb9)	AS07 225	WB
Acetylated Lysine	AS15 3018	ICC, IF, IP, WB
CO Constans (goat)	AS16 3160	WB
DCL2 Dicer-like protein 2	AS15 3100	WB
DNA-binding storekeeper protein-related transcriptional regulator	AS11 1774	WB
DOG1 alpha splice variant	AS15 3032	WB
DRB4 Double-stranded RNA-binding protein 4	AS15 3104	WB
GI Gigantea	AS12 1864A	WB
HDA6 Histone deacetylase 6	AS14 2787	WB
HDZipII-1 Homeodomain-leucine zipper transcription factor	AS08 339	ELISA, WB
KUA1 MYB transcription factor	AS15 2989	WB
MARBP Matrix attachment region-binding protein	AS10 696	IF, WB
Med 6 Mediator of RNA polymerase II transcription subunit 6	AS14 2802	WB
Methylated Lysine	AS15 3021	ELISA, WB, IHC, IP
MLP3.6 protein Transcription factor jumonji (JmjC) domain-containing protein	AS13 2679	WB
PIF3 Phytochrome interacting factor 3 (goat antibody)	AS16 3954	WB
PIF4 Phytochrome interacting factor 4 (goat antibody)	AS16 3955	WB
PIF5 Phytochrome interacting factor 5	AS12 2112	WB
RDR2 RNA-dependent RNA polymerase 2	AS15 3097	IP, WB
RDR6 RNA-dependent RNA polymerase 6	AS15 3098	IP, WB
RPB1 RNA polymerase II subunit B1	AS11 1804	IP
RpoTm DNA-directed mitochondrial RNA polymerase (RpoT1; mitochondrial NEP)	AS15 3078	WB
SGS3 Protein suppressor of gene silencing 3	AS15 3099	WB
SOC1 Suppressor of constans overexpression 1	AS12 1856	WB
Spermine	AS09 599	ELISA
STM Homeobox protein SHOOT MERISTEMLESS	AS11 1764	WB
TOP2 DNA topoisomerase II	AS05 096	IL, WB
TGA1 TGACG motif-binding factor 1, bZIP transcription factor	AS16 3208	WB

DNA/RNA/cell cycle Transcription regulation

Product name	Product number	Applications
TPL Transcription factor TOPLESS (rabbit antibody)	AS16 3207	WB
U1 snRNP 70 kDa U1 small nuclear ribonucleoprotein 70 kDa	AS14 2778	WB
U1 snRNP protein A U1 small nuclear ribonucleoprotein A	AS14 2777	WB
WRKY10 transcription factor	AS16 3851	WB
WRKY22 WRKY transcription factor 22	AS16 3830	WB
WUS WUSCHEL protein	AS11 1759	WB
AP2 domain-containing transcription factor ** In testing	AS11 1762	WB
ARP6 Actin-related protein 6 ** In testing	AS12 2106	WB
CO Constans (chicken) ** In testing	AS16 3958	WB
DCL4 Dicer-like protein 4 ** In testing	AS15 3105	WB
DREB1A Dehydration-responsive element-binding protein 1A ** In testing	AS16 3965	WB
GLIM LIM domain protein GLIM1b ** In testing	AS11 1794	WB
Homeodomain protein BP ** In testing	AS11 1832	WB
LUX Transcription factor LUX ** In testing	AS16 4106	WB
Med7a/b Mediator of RNA polymerase II transcription subunit 7a/b ** In test	AS14 2803A	WB
MYB174 **In testing	AS11 1790	WB
PIF3 Phytochrome interacting factor 3 (rabbit antibody) ** In testing	AS16 3156	WB
PIF4 Phytochrome interacting factor 4 (rabbit) antibody ** In testing	AS16 3157	WB
RDR1 RNA-dependent RNA polymerase 1 ** In testing	AS15 3096	WB
RpoA RNA polymerase alpha subunit (chloroplast) ** In testing	AS15 2866	WB
RpoTp DNA-directed plastidal RNA polymerase (RpoT3; plastidal NEP) **In test	AS16 3150	WB
TERT Telomerase reverse transcriptase ** In testing	AS15 3103	WB
TGA2 TGACG motif-binding factor 2, bZIP transcription factor ** In testing	AS16 3209	WB
TOC1 Timing of CAB expression 1 ** In testing	AS13 2646	WB
TOC1 Timing of CAB expression 1 (other species) ** In testing	AS14 2823	WB
TPL Transcription factor TOPLESS (chicken antibody) ** In testing	AS16 3960	WB

DNA/RNA/cell cycle Translation

Product name	Product number	Applications
Acetylated Lysine	AS15 3018	ICC, IF, IP, WB
Acetylated Lysine	AS10 707-100	ICC, IHC, IP, WB
CSP41b Ribosome associated endonuclease (CRB)	AS08 298	WB
eEF1a Elongation factor 1-alpha	AS10 934	WB
eEF1b Elongation factor 1-beta	AS07 265	WB
eEF1B-alpha1 an 2 Elongation factor 1B-alpha 1 and 1B-alpha 2	AS10 678	WB
eEF1B-alpha2 Elongation factor 1B-alpha 2	AS10 679	WB
eEF1B-beta1 and 2 Elongation factor 1-beta1 and 1-beta2	AS10 677	WB
eEF1B-gamma1 and 2 Elongation factor 1-gamma 1 and 2	AS10 676	WB
EF1A Elongation factor 1-alpha / EF-1-alpha	AS11 1633	WB
EF-G1 Elongation factor G1	AS13 2652	WB
KARI Ketol-acid reductoisomerase	AS15 2879	WB
L13-1 60S ribosomal protein L13-1	AS13 2650	WB
L16 Mitochondrial ribosomal large subunit protein L16	AS15 3069	WB
L7/L12 Ribosomal protein	AS08 331	WB
Methylated Lysine, APC conjugated	AS15 3022	ELISA, IHC, IP, WB
Methylated Lysine, FITC conjugated	AS15 3023	ELISA, IHC, IP, WB
RCS1 Cysteine synthase	AS16 3849	WB
RD N-terminal arginylation	AS15 3050A	Dot
RE N-terminal arginylation	AS15 3050	Dot
RPL1 50S ribosomal protein L1	AS11 1738	WB
RPL2 Ribosomal protein L2 (chloroplastic)	AS15 2876	WB
RPL37 Ribosomal protein L37 (cytoplasmic)	AS12 2115	WB
RPL4 Ribosomal protein L4 (chloroplastic)	AS15 3076	WB

DNA/RNA/cell cycle Translation

Product name	Product number	Applications
RPS1 30S ribosomal protein S1	AS08 309	WB
RPS1 Ribosomal protein S1 (chloroplastic)	AS15 2875	WB
RPS1 Ribosomal protein S1 (mitochondrial)	AS16 3835	WB
RPS12 Ribosomal protein S12 (chloroplastic)	AS12 2114	WB
RPS14 Ribosomal protein S14 (mitochondrial)	AS16 4094	WB
RPS2 Ribosomal protein S2 (mitochondrial)	AS16 3832	WB
RPS5 Ribosomal protein S5 (chloroplastic)	AS15 3075	WB
RPS7 Ribosomal protein S7 (chloroplastic)	AS15 2877	WB
S10 Mitochondrial ribosomal small subunit protein S10	AS15 3067	WB
S4 Mitochondrial ribosomal small subunit protein S4	AS15 3068	WB
S6K1/2 Ribosomal S6 kinase 1/2	AS12 1855	WB
S6K1-2 Ribosomal-protein S6 kinase homolog 1,2 - phosphorylated	AS13 2664	WB
RPL33 50S ribosomal protein L33 (chloroplastic) ** In testing	AS16 4082	WB
RPS14 40S ribosomal protein S14-1 ** In testing	AS12 2111	WB
Rps2 Ribosomal subunit 2 (cytoplasmic) ** In testing	AS10 719	WB

Environmental stress Cold stress

Product name	Product number	Applications
ClpB1 Chaperone protein ClpB1 (cyanobacterial)	AS16 4039	WB
ClpB2 Chaperone protein ClpB2 (cyanobacterial)	AS16 4040	WB
COR14b Cor14b-encoded cold regulated protein	AS06 169	WB
CPT6 Cis-prenyltransferase 6	AS14 2768	WB
Enolase	AS10 651	WB
GORK Potassium channel GORK	AS14 2795	WB
LEA4-5 Late embryogenesis abundant protein 4-5	AS13 2758	WB
LEA4-5 Late embryogenesis abundant protein 4-5 (affinity purified)	AS13 2758A	WB
LEA6-3 Late embryogenesis abundant protein 6-3	AS13 2756	WB
PGL35 Plastoglobulin 35; FIB1a; FBN1a	AS06 116	ICC, WB
Proline ELISA quantitation kit	AS16 3151	WB
S6K1-2 Ribosomal-protein S6 kinase homolog 1,2 - phosphorylated	AS13 2664	WB
sII0528 Putative zinc metalloprotease sII0528	AS10 1592	WB
SUS1 Sucrose synthase 1	AS15 2830	WB

Environmental stress Drought stress

Product name	Product number	Applications
AHB2 Hemoglobin 2	AS13 2745	WB
APase Acid phosphatase	AS09 520	ELISA, IF, IHC, WB
APase Acid phosphatase, Biotin conjugated	AS09 541	ELISA, IF, IHC, WB
ATG5 Autophagy-related protein 5	AS15 3060	WB
ATG8 Autophagy-related protein	AS14 2769	IL, WB
BiP Lumenal-binding protein	AS09 481	ELISA, IF, IG, WB
Cat Catalase (peroxisomal marker)	AS09 501	WB
Dehydrin	AS07 206	WB
Dehydrin (affinity purified)	AS07 206A	WB
Dehydrin ERD10	AS16 4101	SPR

Environmental stress Drought stress

Product name	Product number	Applications
EIN2 Ethylene insensitive 2	AS12 1865	WB
GLDH Galactono-1,4 lactone dehydrogenase	AS06 182	WB
GLN1 GLN2 GS1 GS2 glutamine synthetase global antibody	AS08 295	WB
GLN2 GS2, chloroplastic form of glutamine synthetase	AS08 296	WB
GORK Potassium channel GORK	AS14 2795	WB
ICE1 Inducer of CBF expression 1	AS16 3971	WB
LEA3 Late embryogenesis abundant protein	AS16 3845	WB
LEA4-25 Group 4-late embryogenesis abundant protein	AS13 2757	WB
LEA4-5 Late embryogenesis abundant protein 4-5	AS13 2758	WB
LEA4-5 Late embryogenesis abundant protein 4-5 (affinity purified)	AS13 2758A	WB
LEA6-3 Late embryogenesis abundant protein 6-3	AS13 2756	WB
LEA6-1 Late embryogenesis abundant protein 6-1	AS17 4153	WB
LOX Lipoxygenase	AS06 128	WB
LOX Lipoxygenase (affinity purified)	AS06 128A	WB
LOX-C Lipoxygenase (chloroplastic)	AS07 258	WB
PIP2;3 Aquaporin, plasma membrane intrinsic protein 2-3	AS09 506	ELISA, IG, WB
PIP2;7 Plasma membrane aquaporin (N-terminal)	AS09 469	ELISA, WB
PIP2-1-7 Plasma membrane aquaporin isoforms 1-7 (C-terminal)	AS12 2110	WB
PR-1 Pathogenesis-related protein 1	AS10 687	WB
Proline ELISA quantitation kit	AS16 3151	WB
SAM1-4 S-adenosylmethionine synthase	AS16 3148	WB
SUS1 Sucrose synthase 1	AS15 2830	WB
ZEP Zeaxanthin Epoxidase	AS08 289	WB
ZEP Zeaxanthin Epoxidase	AS15 3092	WB
CBL Calcineurin B-like protein ** In testing	AS16 4033	WB
FAAH Fatty acid amide hydrolase ** In testing	AS16 3972	WB
HD-ZIP Homeobox-leucine zipper protein ATHB-12 ** In testing	AS11 1766	WB
HD-ZIP Homeobox-leucine zipper protein ATHB-13 ** In testing	AS11 1767	WB
HMT Homocysteine S-methyltransferase ** In testing	AS16 3837	WB
HOS1 E3 ubiquitin-protein ligase HOS1 ** In testing	AS16 3970	WB
MKK1 Mitogen-activated protein kinase kinase 1 ** In testing	AS15 2904	WB
NCED3 9-cis-epoxycarotenoid dioxygenase NCED3 ** In testing	AS16 3964	WB
PDF1 Plant defensin 1 ** In testing	AS16 3973	WB

Environmental stress Heat shock

Product name	Product number	Applications
ABI2 Abscisic acid insensitive 2	AS12 1871	WB
ACD Alpha crystalline domain of sHSP	AS15 3029	WB
AHB2 Hemoglobin 2	AS13 2745	WB
ATPase AAA2 domain	AS11 1754	WB
CDJ1 Chloroplast DnaJ homolog 1	AS06 179	IP, WB
CGE1 Alfa-CGE1, chloroplastic GrpE homolog	AS06 176	IP, WB
ClpB-P ClpB3	AS09 459	WB
DnaJ Prokaryotic heat shock protein	AS07 271	WB
DnaK Chloroplast stromal chaperone	AS07 270	WB
DnaK2 Heat shock protein 70-2 (HSP70-2)	AS08 350	WB
EIN2 Ethylene insensitive 2	AS12 1865	WB
HSC70/HSP70 Heat shock cognate protein 70 / heat shock protein 70	AS07 233	ELISA, IP, WB
HSF1 Heat shock factor 1	AS06 178	WB
HSP101 ClpB heat shock protein, C-terminal	AS08 287	WB
HSP101 ClpB heat shock protein, N-terminal (rabbit antibody)	AS07 253	WB
HSP101 ClpB heat shock protein, N-terminal (chicken antibody)	AS08 283	WB
HSP101 Nuclear/cytoplasmic heat shock protein	AS08 290	WB
HSP16.6 Class I heat shock protein 16.6 (cytosolic)	AS08 286	WB

Environmental stress Heat shock

Product name	Product number	Applications
HSP16.9 16.9 kDa class I heat shock protein 2	AS12 2570	WB
HSP17.6 Cytosolic class I heat shock protein 17.6 (rabbit antibody)	AS07 254	WB
HSP17.6 Cytosolic class I heat shock protein 17.6 (chicken antibody)	AS08 284	WB
HSP17.7 Cytosolic class II heat shock protein 17.7	AS07 255	WB
HSP18.5 Class IV heat shock protein	AS11 1628	WB
HSP21 Chloroplastic heat shock protein	AS08 285	WB
HSP23.5 Heat shock protein 23.5 (mitochondrial)	AS15 2979	WB
HSP23.6 Heat shock protein 23.6 (mitochondrial)	AS15 2980	WB
HSP26.5 Heat shock protein 26.5 (mitochondrial)	AS15 2981	WB
HSP70 Heat shock protein 70 (cytoplasmic)	AS08 371	IP, WB
HSP70 Heat shock protein 70 (chloroplastic)	AS08 348	IP, WB
HSP70 Heat shock protein 70 (mitochondrial)	AS08 347	WB
HSP70B Stromal alpha-HSP70	AS06 175	IP, WB
HSP70 Heat Shock Protein 70, plant ELISA kit	AS17 4128	ELISA
HSP90-1 Heat shock protein 90-1	AS08 346	WB
HSP90-2 Heat shock protein 90-2	AS11 1629	WB
HSP90C Alfa-HSP90C, heat shock protein	AS06 174	IP, WB
slr0156 ATP-dependent chaperone clpB	AS08 355	WB
slr1641 ATP-dependent chaperone clpB	AS08 344	WB

Environmental stress Heavy metal stress

Product name	Product number	Applications
ALD Fructose-1,6 bisphosphate aldolase	AS08 294	WB
APX L-ascorbate peroxidase	AS08 368	WB
CCS Chloroplastic copper chaperone for SOD	AS07 219	WB
CSD2 Chloroplastic Cu/Zn superoxide dismutase	AS06 170	WB
Cu/ZnSOD Cu/Zn superoxide dismutase	AS10 652	WB
FeSOD Chloroplastic Fe-dependent superoxide dismutase	AS06 125	WB
Gamma-glutamyl-cysteine	AS11 1811	ICC, IG
GPX Glutathione peroxidase, chloroplastic	AS04 055	ELISA, WB
GR Glutathione reductase	AS06 181	IL, IP, WB
IRT1 Iron regulated transporter 1	AS11 1780	WB
KrP Kelch repeat-containing protein / galactose oxidase (At3g07720)	AS14 2764	WB
LOX Lipoygenase	AS06 128	WB
LOX Lipoygenase (affinity purified)	AS06 128A	WB
LOX-C Lipoygenase, chloroplastic	AS07 258	WB
MnSOD Manganese superoxide dismutase	AS09 524	WB
MT1a Metallothionein type1	AS13 2684	IL, WB
MT2a Metallothionein 2a	AS13 2685	IL, WB
NtrC Thioredoxin reductase (TR/TRxR)	AS06 159	WB
NtrC Thioredoxin reductase (TR/TRxR)	AS07 243	WB
RGA DELLA protein RGA	AS11 1630	WB
SUS1 Sucrose synthase 1	AS15 2830	WB
ZCP1 Zinc Chaperone Protein	AS14 2770	WB
ZCP2 Zinc Chaperone Protein	AS12 1848	WB
RGA DELLA protein RGA (Oryza sativa) ** In testing	AS14 2796	WB

Environmental stress Hypoxia

Product name	Product number	Applications
ADH Alcohol dehydrogenase (hypoxia marker)	AS10 685	WB
ADH/ALDH Alcohol/acetaldehyde dehydrogenase (bacterial/algal)	AS10 748	WB
PDC Pyruvate decarboxylase	AS10 691	WB
Sub1C Submergence-1C	AS11 1770	WB
SUS1 Sucrose synthase 1	AS15 2830	WB
Sub1A Sub1a protein (rice) ** In testing	AS11 1769	WB

Environmental stress Oxidative stress

Product name	Product number	Applications
3-nitroY Nitrotyrosine	AS10 706-100	ELISA, IHC, IP, WB
ACO1 Aconitase	AS09 521	WB
AHB2 Hemoglobin 2	AS13 2745	WB
A0 Apoplastic ascorbate oxidase	AS06 184	WB
A0 Ascorbate oxidase	AS09 384	ELISA, IHC, WB
A0 Ascorbate oxidase, Biotin conjugated	AS09 383	ELISA, WB
AOX1 Alternative oxidase 1	AS06 152	WB
AOX1/2 Plant alternative oxidase 1 and 2	AS04 054	IL, WB
APX L-ascorbate peroxidase	AS08 368	WB
ATG4 Autophagy protein 4	AS15 2831	WB
cAPX Ascorbate peroxidase (cytosolic)	AS06 180	IL, IP, WB
Cat Catalase (algal antibody)	AS15 2991	WB
CCS Chloroplastic copper chaperone for SOD	AS07 219	WB
Cu/ZnSOD Cu/Zn superoxide dismutase	AS10 652	WB
DHAR1 Dehydroascorbate Reductase 1	AS11 1746	WB
DHAR2 Dehydroascorbate Reductase 2	AS11 1747	WB
DMPO DMPO nitron adduct	AS11 1632	ICC, IP, IT, WB
DNA Damage (8-OHdG) ELISA kit	AS15 2887	WB
DON Deoxynivalenol (Vomitoxin) ELISA kit	AS16 4028	WB
EDS1 Enhanced disease susceptibility 1	AS13 2751	WB
FeSOD Chloroplastic Fe-dependent superoxide dismutase	AS06 125	WB
Gamma-ECS Gamma glutamylcysteine synthase	AS06 186	IL, WB
Gamma-glutamyl-cysteine	AS11 1811	ICC, IG
GDP-L-Galactose phosphorylase	AS10 723	WB
GOX Glycolate oxidase 1,2,3	AS14 2772	WB
GPX Glutathione peroxidase (chloroplastic)	AS04 055	ELISA, WB
GR Glutathione reductase	AS06 181	IL, IP, WB
Grx5 Monothiol glutaredoxin-S5	AS15 3108	WB
GS Glutathione synthase, GSH-S	AS06 183	IL, WB
GSH Glutathione (rabbit antibody)	AS09 594	ID, IHC
GSH Glutathione (rat antibody)	AS09 595	ELISA, IHC
HRP Horseradish peroxidase	AS16 3951	ELISA, WB
HRP Horseradish peroxidase (affinity purified)	AS09 549	ELISA, IF, IHC
KatG Catalase peroxidase (HPI), Cyanobacterial	AS08 374	WB
L-cys L-cysteine	AS08 360	ICC
LOX2 Lipoygenase 2	AS08 340	ELISA, WB
MnSOD Manganese superoxide dismutase	AS09 524	WB
NBR1 Autophagy substrate NBR1 (affinity purified)	AS14 2805A	WB
PGL35 Plastoglobulin 35; FIB1a; FBN1a	AS06 116	ICC, WB
Proline ELISA quantitation kit	AS16 3151	WB
PrxQ Peroxiredoxin, thioredoxin reductase	AS05 093	WB
PsbA D1 protein of PSII, C-terminal	AS05 084	WB
RBOHD Respiratory burst oxidase homolog protein D	AS15 2962	WB
RGA DELLA protein RGA	AS11 1630	WB
GrxS3,4,5 Monothiol glutaredoxin-S3, S4, S5	AS13 2703	WB
RGA DELLA protein RGA (Oryza sativa) ** In testing	AS14 2796	WB

Environmental stress Pathogen attack

Product name.....	Product number	Applications
AG02 Argonaute 2.....	AS13 2682	WB
ATG4 Autophagy protein 4.....	AS15 2831	WB
ATG5 Autophagy-related protein 5.....	AS15 3060	WB
ATG8 Autophagy-related protein.....	AS14 2769	IL, WB
BIK1 Botrytis-induced kinase 1.....	AS16 4030	WB
CERK1 Chitin elicitor receptor kinase 1.....	AS16 4037	WB
COI1 Coronate insensitive 1 (rabbit).....	AS12 2637	WB
COI1 Coronate insensitive 1 (mouse).....	AS16 3844	WB
Cp2 Cysteine protease	AS16 3110	WB
CPK-EF Calcium-dependent protein kinase EF domain.....	AS11 1807	WB
EDS1 Enhanced disease susceptibility 1.....	AS13 2751	WB
EIN2 Ethylene insensitive 2.....	AS12 1865	WB
EIN2 Ethylene insensitive 2.....	AS12 1865	WB
FLS2 Flagellin-sensitive 2.....	AS12 1857	WB
GOX Glycolate oxidase 1,2,3.....	AS14 2772	WB
Hellethionin (100 ul).....	AS10 1626	ELISA, WB
HRP Horseradish peroxidase.....	AS16 3951	ELISA, WB
IFR Isoflavone reductase.....	AS16 3847	WB
NBR1 Autophagy substrate NBR1.....	AS14 2805	WB
NBR1 Autophagy substrate NBR1 (affinity purified).....	AS14 2805A	WB
NPR1 Nonexpresser of PR genes 1.....	AS12 1854	WB
Patatin.....	AS12 1842	IP, IL, WB
Patatin (affinity purified).....	AS12 1842A	IP, IL, WB
PDR8 ABC transporter G family member 36.....	AS09 471	ELISA, WB
PP2A Serine/threonine protein phosphatase 2A 59 kDa regulatory subunit B' gam.....	AS13 2747	IL, WB
PR-1 Pathogenesis-related protein 1.....	AS10 687	WB
PR-10 Pathogenesis-related protein 10.....	AS13 2724	WB
PR-2 GLU I Class I beta-1,3-glucanase.....	AS07 208	IL, WB
PR-2 Pathogenesis-related protein 2.....	AS12 2366	WB
PR-3 / CHN Class I chitinase.....	AS07 207	IL, IP, WB
PR-4 Pathogenesis-related protein 4 (<i>A. thaliana</i>).....	AS12 2369	WB
PR-4 Pathogenesis-related protein 4.....	AS14 2810	WB
PR-5 Pathogenesis-related protein 5 (<i>A. thaliana</i>).....	AS12 2373	WB
PRN2 Pirin-like protein	AS14 2794	WB
RPS4 Disease resistance protein RPS4.....	AS16 3992	WB
SAM1-4 S-adenosylmethionine synthase.....	AS16 3148	WB
TM2 Tobacco mosaic virus resistance-2.....	AS15 3062	WB
UBQ11 Ubiquitin	AS08 307	WB
UBQ11 Ubiquitin (affinity purified).....	AS08 307A	WB
ATG7 ** In testing.....	AS15 3061	WB
ICS1 Isochorismate synthase 1, chloroplastic ** In testing.....	AS16 4107	WB
MKK1 Mitogen-activated protein kinase kinase 1 ** In testing.....	AS15 2904	WB
MKK5 Mitogen-activated protein kinase kinase 5 ** In testing.....	AS15 2907	WB
NPR1 Nonexpresser of PR genes 1 (other species) ** In testing.....	AS16 4108	WB
PR-5 Pathogenesis-related protein 5 ** In testing.....	AS15 2858	WB

Environmental stress Salt stress

Product name.....	Product number	Applications
AC01 Aconitase.....	AS09 521	WB
AG01 Argonaute 1 Blocking peptide.....	AS09 527P	NeA
ALD Fructose-1,6 bisphosphate aldolase.....	AS08 294	WB
APase Acid phosphatase	AS09 520	ELISA, IF, IHC, WB
APase Acid phosphatase, Biotin conjugated.....	AS09 541	ELISA, IF, IHC, WB
BiP Lumenal-binding protein	AS09 481	ELISA, IF, IG, WB

Environmental stress Salt stress

Product name.....	Product number	Applications
EIN2 Ethylene insensitive 2.....	AS12 1865	WB
GAI DELLA protein GAI.....	AS11 1631	WB
GORK Potassium channel GORK.....	AS14 2795	WB
H+ATPase Plasma membrane H+ATPase.....	AS07 260	IF, IL, WB
Na+/H+ antiporter, sodium/hydrogen exchanger	AS09 484	ELISA, WB
PIP2;3 Aquaporin, plasma membrane intrinsic protein 2-3.....	AS09 506	ELISA, IG, WB
PIP2;7 Plasma membrane aquaporin (N-terminal).....	AS09 469	ELISA, WB
PIP2-1-7 Plasma membrane aquaporin isoforms 1-7 (C-terminal).....	AS12 2110	WB
Proline ELISA quantitation kit.....	AS16 3151	WB
RGL2 RGA-like protein 2 (DELLA protein).....	AS11 1803	WB
RS1 Salt stress root protein RS1.....	AS16 3833	WB
SAL1 Sal1 phosphatase.....	AS07 256	WB
SAM1-4 S-adenosylmethionine synthase.....	AS16 3148	WB
V-ATPase Epsilon subunit of tonoplast H+ATPase.....	AS07 213	IHC, WB
V-ATPase Epsilon subunit of tonoplast H+ATPase.....	AS09 577	WB
V-ATPase Epsilon subunit of tonoplast H+ATPase (affinity purified).....	AS09 577A	WB
CBL Calcineurin B-like protein ** In testing.....	AS16 4033	WB
FAAH Fatty acid amide hydrolase ** In testing.....	AS16 3972	WB
HOS1 E3 ubiquitin-protein ligase HOS1 ** In testing.....	AS16 3970	WB
ICE1 Inducer of CBF expression 1 ** In testing.....	AS16 3971	WB
MKK1 Mitogen-activated protein kinase kinase 1 ** In testing.....	AS15 2904	WB
MKK2 Mitogen-activated protein kinase kinase 2 ** In testing.....	AS15 2905	WB
NCED3 9-cis-epoxycarotenoid dioxygenase NCED3 ** In testing.....	AS16 3964	WB
PDF1 Plant defensin 1 ** In testing.....	AS16 3973	WB

Environmental stress Wounding

Product name.....	Product number	Applications
AHB2 Hemoglobin 2.....	AS13 2745	WB
COI1 Coronate insensitive 1 (rabbit antibody).....	AS12 2637	WB
COI1 Coronate insensitive 1 (mouse antibody).....	AS16 3844	WB
GSNOR S-nitrosoglutathione reductase.....	AS09 647	WB
HRP Horseradish peroxidase.....	AS16 3951	ELISA, WB
HRP Horseradish peroxidase, Affinity purified.....	AS09 549	ELISA, IF, IHC, WB
LEA3 Late embryogenesis abundant protein.....	AS16 3845	WB
NRT1.4 Nitrate transporter.....	AS09 473	ELISA, WB
PPO Polyphenol oxidase	AS10 1585	WB

Fermentation

Product name.....	Product number	Applications
ADH/ALDH Alcohol/acetaldehyde dehydrogenase (bacterial/algal).....	AS10 748	WB
FMR Fumarate reductase.....	AS12 2618	WB
HydA Iron-hydrogenase HydA1/HydA2.....	AS09 514	WB
HydA2 Iron-hydrogenase HydA2.....	AS09 600	WB
MME4 Malic enzyme.....	AS12 2617	WB
PFOR Pyruvate oxidoreductase.....	AS07 275	WB
PTA Phosphate acetyltransferase.....	AS07 276	WB
ADH/ALDH Alcohol/acetaldehyde dehydrogenase (bacterial/algal).....	AS10 748	WB
FMR Fumarate reductase.....	AS12 2618	WB
HydA Iron-hydrogenase HydA1/HydA2.....	AS09 514	WB

Fermentation

Product name	Product number	Applications
HydA2 Iron-hydrogenase HydA2	AS09 600	WB
MME4 Malic enzyme	AS12 2617	WB
PFOR Pyruvate oxidoreductase	AS07 275	WB
PTA Phosphate acetyltransferase	AS07 276	WB

Food proteins

Product name	Product number	Applications
Acrylamid Prop-2-enamide	AS13 2732	IAC
Bromelain	AS09 552	ELISA, IF, IHC, WB
Caseins	AS15 2847	ELISA, CGT, RIP, WB
Conglutin gamma Lupin-specific globulin	AS08 335	WB
Ficain Ficin	AS09 550	ELISA, IF, IHC, WB
Ficain Ficin, Biotin conjugated	AS09 551	ELISA, IF, IHC, WB
Peanut Agglutinin	AS15 2848	ELISA, IAC
Peanut Ara h1, clone 17	AS16 3977	ELISA
Peanut protein	AS09 566	ELISA, WB
PPI Papain	AS09 545	ELISA, IF, IHC, WB
Ricin (RTA subunit), clone MMA	AS09 648	ELISA, IHC
Ricin (whole molecule), clone MMH	AS09 649	ELISA, IHC
Sesame protein	AS09 568	ELISA, WB
Soy protein	AS09 569	ELISA, WB
Sporamin	AS10 697	WB
Wheat gluten	AS09 571	ELISA, WB

Hormones

Abscisic acid

Product name	Product number	Applications
ABI2 Abscisic acid insensitive 2	AS12 1871	WB
14-3-3 GRF General regulatory element	AS12 2119	WB
ABA Abscisic acid	AS06 195	ELISA, IL
ABA Abscisic acid (C1) (for IL)	AS09 446	IF, IL
ABA Abscisic acid ELISA quantitation kit	AS11 1748	WB
ABA tracer (alkaline phosphatase conjugated)	AS10 726	WB
ABA-BSA Abscisic acid BSA conjugate	AS11 1837	ICC, IHC
ABI1 Abscisic acid insensitive 1	AS12 1861	IP, WB
ABI5 Abscisic acid insensitive 5	AS12 1863	IL, WB
MYC2 Transcription factor MYC2	AS12 1869	WB
PYR1 Abscisic acid receptor RCAR11	AS13 2634	WB
SnRK2.2, SnRK2.3, SnRK2.6 Ser/Thr-protein kinase SnRK	AS14 2783	WB
SRK2E Ser/Thr-protein kinase SnRK2.6	AS13 2635	IP, PdA, WB
ABF3 Abscisic acid-insensitive 5-like 6 ** In testing	AS13 2639	WB
ABI4 Abscisic acid insensitive 4 ** In testing	AS16 3989	WB
CPK-t2 Calcium-dependent protein kinase active site ** In testing	AS13 2667	WB
VP1 Viviparous 1 (ABI3) ** In testing	AS13 2636	WB
WRI1 Ethylene-responsive transcription factor WRI1 **v	AS16 4105	WB

Hormones Auxins

Product name	Product number	Applications
ABP1 Auxin-binding protein 1 (maize)	AS16 3946	WB
ABP1 Auxin-binding protein 1 (tomato)	AS16 3945	WB
ABP4 Auxin-binding protein 4 (maize)	AS16 3947	WB
AUX1 Auxin transporter protein 1 (rabbit antibody)	AS16 3159	WB
AUX1 Auxin transporter protein 1 (goat antibody)	AS16 3957	WB
CHS Chalcone synthase	AS12 2615	WB
IAA Auxin ELISA quantitation kit	AS11 1749	WB
IAA Indole 3 acetic acid	AS06 193	ELISA, IL
IAA Indole-3-acetic acid (C1') (for IL)	AS09 445	IL
IAA Indole-3-acetic acid (N1) (for IL)	AS09 421	IL
IAA tracer (alkaline phosphatase conjugated)	AS09 517	ELISA
IBA Indole-3-butyric acid (rabbit antibody)	AS13 2744	ELISA, IAC
IBA Indole-3-butyric acid (chicken antibody)	AS15 3053	ELISA, IAC
PIF4 Phytochrome interacting factor 4 (goat antibody)	AS16 3955	WB
Auxin efflux carrier component ** In testing	AS11 1830	WB
PIF4 Phytochrome interacting factor 4 (rabbit antibody) ** In testing	AS16 3157	WB
PIN15 Auxin efflux carrier component ** In testing	AS11 1828	WB
PIN2 Auxin efflux carrier component 2 ** In testing	AS11 1838	WB
PIN3 Auxin efflux carrier component 3 ** In testing	AS11 1839	WB
PIN9 Auxin efflux carrier component 9 ** In testing	AS11 1791	WB
TIR1 Transport inhibitor response 1 ** In testing	AS16 3963	WB

Hormones Biosynthesis/regulation

Product name	Product number	Applications
ACC 1-Aminocyclopropane-1-carboxylic acid	AS11 1800	IG
ACC synthase 7 1-aminocyclopropane-1-carboxylate synthase 7	AS14 2774	WB
CHS Chalcone synthase	AS12 2615	WB
COI1 Coronate insensitive 1	AS12 2637	WB
EIN2 Ethylene insensitive 2	AS12 1865	WB
GAI DELLA protein GAI	AS11 1631	WB
NPR1 Nonexpresser of PR genes 1	AS12 1854	WB
RGA DELLA protein RGA	AS11 1630	WB
RGL2 RGA-like protein 2 (DELLA protein)	AS11 1803	WB
SAM1-4 S-adenosylmethionine synthase	AS16 3148	WB
SAM1-4 S-adenosylmethionine synthase (affinity purified)	AS16 3148A	WB
SNE18 Rossmann-fold NAD(P)-binding domain-containing protein	AS12 2118	WB
ABF3 Abscisic acid-insensitive 5-like 6 ** In testing	AS13 2639	WB
Auxin efflux carrier component ** In testing	AS11 1830	WB
ADELLA protein RGL3 ** In testing	AS14 2804	WB
HMT Homocysteine S-methyltransferase ** In testing	AS16 3837	WB
NPR1 Nonexpresser of PR genes 1 (other species) ** In testing	AS16 4108	WB
RGA DELLA protein RGA (oryza sativa) ** In testing	AS14 2796	WB
RGL1 RGA-like protein 1 (DELLA protein) ** In testing	AS11 1802	WB
Salicylate 4-aminosalicylic acid ** In testing	AS09 412	ELISA, FPIA

Hormones Brassinosteroids

Product name	Product number	Applications
BAK1 Brassinosteroid insensitive 1-associated receptor kinase 1	AS12 1858	IP, WB
BIN2 Brassinosteroid insensitive 2	AS16 3203	WB
BRI1 Brassinosteroid insensitive 1	AS12 1859	IP, WB
BZR1 Brassinazole resistant 1	AS16 3219	WB
BZR2/BES1 Brassinazole resistant 2 ** In testing	AS16 3942	WB

Hormones Cytokines

Product name	Product number	Applications
Cytokinin Cis-zeatin riboside (1mg)	AS09 419	ELISA, RIA
Cytokinin Cis-zeatin riboside (for IL)	AS09 431	ICC
Cytokinin Dihydrozeatin riboside (1mg)	AS09 416	ELISA, RIA
Cytokinin Dihydrozeatin riboside (for IL)	AS09 437	IL
Cytokinin Kinetin riboside (1 mg)	AS09 443	ELISA, RIA
Cytokinin Meta-topolin riboside (1 mg)	AS09 417	ELISA, RIA
Cytokinin Meta-topolin riboside (for IL)	AS09 440	IL
Cytokinin N6-benzyladenosine (1 mg)	AS09 425	ELISA, RIA
Cytokinin N6-benzyladenosine (for IL)	AS09 438	IL
Cytokinin N6-isopentenyladenosine (1 mg)	AS09 415	ELISA, RIA
Cytokinin N6-isopentenyladenosine (for IL)	AS09 435	IL
Cytokinin Ortho-topolin riboside (1 mg)	AS09 418	ELISA, RIA
Cytokinin Ortho-topolin riboside (for IL)	AS09 442	IL
Cytokinin Trans-zeatin riboside (1mg)	AS09 414	ELISA, RIA

Hormones Ethylene

Product name	Product number	Applications
ACC 1-Aminocyclopropane-1-carboxylic acid	AS11 1800	IG
ACC synthase 7 1-aminocyclopropane-1-carboxylate synthase 7	AS14 2774	WB
EIN2 Ethylene insensitive 2	AS12 1865	WB
SAM1-4 S-adenosylmethionine synthase	AS16 3148	WB
ABI4 Abscisic acid insensitive 4 ** In testing	AS16 3989	WB
CTR1 Constitutive triple response 1 ** In testing	AS16 3988	WB
ETR1 Ethylene receptor 1 ** In testing	AS16 3987	WB
HMT Homocysteine S-methyltransferase ** In testing	AS16 3837	WB

Hormones Gibberellins

Product name	Product number	Applications
14-3-3 GRF General regulatory element	AS12 2119	WB
AtCCaP1 Vacuolar calcium-binding protein-related	AS09 483	ELISA, WB
GA3 Gibberellic acid **	AS06 194	IL
GA3-BSA Gibberellic acid BSA conjugate	AS10 933	ICC, IHC
GAI DELLA protein GAI	AS11 1631	WB
GID1c Gibberellin receptor GID1C	AS14 2800	WB
GID2 F-BOX protein GID2 (SLEEPY 1)	AS13 2638	WB
PIF3 Phytochrome interacting factor 3 (goat)	AS16 3954	WB
RGA DELLA protein RGA	AS11 1630	WB
RGL2 RGA-like protein 2 (DELLA protein)	AS11 1803	IL, WB
DELLA protein RGL3	AS14 2804	WB
PIF3 Phytochrome interacting factor 3 (rabbit antibody) ** In testing	AS16 3156	WB
RGA DELLA protein RGA ** In testing	AS14 2796	WB
RGL1 RGA-like protein 1 (DELLA protein) ** In testing	AS11 1802	WB
SLR1 Rice DELLA protein ** In testing	AS15 2954	WB

Hormones Jasmonates

Product name	Product number	Applications
COI1 Coronate insensitive 1 (rabbit antibody)	AS12 2637	WB
COI1 Coronate insensitive 1 (mouse antibody)	AS16 3844	WB
JA Jasmonic acid	AS11 1799	IL
JAZ1 Jasmonate ZIM-domain protein 1	AS13 2648	WB
LEA3 Late embryogenesis abundant protein	AS16 3845	WB
NPR1 Nonexpresser of PR genes 1	AS12 1854	WB
JAR1 Jasmonic acid-amido synthetase JAR1 ** In testing	AS16 3688	WB
NPR1 Nonexpresser of PR genes 1 (other species) ** In testing	AS16 4108	WB

Hormones Salicylic acid

Product name	Product number	Applications
BIK1 Botrytis-induced kinase 1	AS16 4030	WB
CERK1 Chitin elicitor receptor kinase 1	AS16 4037	WB
EDS1 Enhanced disease susceptibility 1	AS13 2751	WB
NPR1 Nonexpresser of PR genes 1	AS12 1854	WB
ICS1 Isochorismate synthase 1, chloroplastic	AS16 4107	WB
RPS4 Disease resistance protein RPS4	AS16 3992	WB
NPR1 Nonexpresser of PR genes 1 (other species) ** In testing	AS16 4108	WB
Salicylate 4-aminosalicylic acid ** In testing	AS09 412	ELISA, FPIA

Mitochondria Respiration

Product name.....	Product number	Applications
AC01 Aconitase.....	AS09 521	WB
AOX AOX positive control/quantitation standard.....	AS04 054S	WB
AOX1 Alternative oxidase 1.....	AS06 152	WB
AOX1/2 Plant alternative oxidase 1 and 2.....	AS04 054	IL, WB
AtpB Beta subunit of ATP synthase, chloroplastic + mitoch (chicken antibody).AS03 030	AS03 030	IL, WB
AtpB Beta subunit of ATP synthase, chloroplastic + mitoch (rabbit) antibody...AS05 085 ..	AS05 085 ..	BN-PAGE, IF, WB
AtpB Beta subunit of ATP synthase, mitochondrial.....	AS16 3976 ..	BN-PAGE, IF, WB
Beta-CA1, beta-CA2 Carbonic anhydrase mitochondrial Chlamydomonas.....	AS11 1737	IF, WB
COX11 Cytochrome c oxidase assembly protein.....	AS10 938	WB
COXII Cytochrome oxidase subunit II.....	AS04 053A	BN-PAGE, WB
COXII Cytochrome oxidase subunit II.....	AS04 052	WB
COXIIb Cytochrome oxidase subunit II b	AS06 151	WB
Cyt c Cytochrome c.....	AS08 343A	WB
DHAR1 Dehydroascorbate Reductase 1.....	AS11 1746	WB
FtsH10 ATP-dependent zinc metalloprotease FtsH10 (mitochondrial).....	AS07 251 ..	BN-PAGE, IP, WB
FtsH1-11 ATP-dependent zinc metalloprotease FtsH1-11.....	AS11 1789	BN-PAGE, WB
FtsH3 + FtsH10 ATP-dependent zinc metalloprotease FtsH3 + FtsH10 (mitochondrial)AS07 204.....	AS07 204.....	BN-PAGE, WB
FtsH4 ATP-dependent zinc metalloprotease FtsH4 (mitochondrial).....	AS07 205	WB
GDC-H H protein of glycine decarboxylase complex (GDC).....	AS05 074	WB
GLDH Galactono-1,4 lactone dehydrogenase.....	AS06 182	WB
HSP23.5 Heat shock protein 23.5 (mitochondrial)	AS15 2979	WB
AC01 Aconitase.....	AS09 521	WB
HSP23.6 Heat shock protein 23.6 (mitochondrial).....	AS15 2980	WB
HSP26.5 Heat shock protein 26.5 (mitochondrial).....	AS15 2981	WB
HSP70 Heat shock protein 70, mitochondrial	AS08 347	WB
IDH Isocitrate dehydrogenase.....	AS06 203A	WB
L16 Mitochondrial ribosomal large subunit protein L16.....	AS15 3069	WB
NAD3 NADH-ubiquinone oxidoreductase chain 3.....	AS16 3831	WB
NAD6 NADH-ubiquinone oxidoreductase chain 6.....	AS15 2926	WB
NAD-ME Mitochondrial NAD-dependent malic enzyme.....	AS16 3932	IL, IP, WB
NDPK Nucleoside diphosphate kinase.....	AS08 302	WB
RpoTm DNA-directed mitochondrial RNA polymerase (RpoT1; mitochondrial NEP)...AS15 3078	AS15 3078	WB
S10 Mitochondrial ribosomal small subunit protein S10	AS15 3067	WB
S4 Mitochondrial ribosomal small subunit protein S4	AS15 3068	WB
SHMT Serine hydroxymethyltransferase.....	AS05 075	WB
ST01 Stomatin-like protein 1.....	AS17 4148	WB
ST02 Stomatin-like protein 2.....	AS17 4149	WB
Tom 9 Mitochondrial import receptor subunit TOM9.....	AS15 2902	WB
UCP Uncoupling protein.....	AS12 1850	WB
VDAC1 Voltage-dependent anion-selective channel protein 1.....	AS07 212 ..	BN-PAGE, IL, WB
GDH2 Glutamate dehydrogenase 2 ** In testing.....	AS16 4034	WB
NADH Cytochrome B5 reductase ** In testing.....	AS11 1795	WB

Membrane transport Endomembrane

Product name.....	Product number	Applications
ARF1 ADP-ribosylation factor 1.....	AS08 325	IF, IG, WB
BiP Luminal-binding protein	AS09 481	ELISA, IF, IG, WB
HDEL Endoplasmic reticulum retention signal.....	AS10 683	IF, IG, WB
KDEL Endoplasmic reticulum retention signal.....	AS13 2665	IHC, WB
KDEL Endoplasmic reticulum retention signal, HRP conjugated.....	AS15 3016	IHC, WB

Membrane transport Endomembrane

Product name.....	Product number	Applications
L13-1 60S ribosomal protein L13-1.....	AS09 478	ELISA, WB
PIP (PIP1;1, PIP1;2, PIP1;3, PIP1;4, PIP1;5) Aquaporins.....	AS09 487	WB
RPS12 Ribosomal protein S12 (chloroplastic).....	AS12 2114	WB
RPS14 40S ribosomal protein S14-1	AS12 2111	WB
Sec21p Gamma subunit, COP vesicles.....	AS08 327	IF, WB
SMT1 Sterol methyltransferase 1.....	AS07 266	IL, WB
AtArf2 ADP ribosylation factor 2.....	AS09 476	ELISA, WB
BiP Lumenal-binding protein (chicken antibody).....	AS09 614	IF, WB
BiP Lumenal-binding protein (goat antibody).....	AS09 615	WB
Clathrin heavy-chain 1,2	AS10 690	IF, IL, WB
CNX1/2 CALNEXIN HOMOLOG 1/2.....	AS12 2365	WB
GPXh Glutathione peroxidase.....	AS15 2882	WB
GST class-phi Glutathione S tranferase.....	AS09 479	ELISA, WB
GST1 Glutathione-S-transferase.....	AS15 2883	WB
HDEL Endoplasmic reticulum retention signal (25 µg).....	AS10 683-25	IF, IG, WB
L13-1 60S ribosomal protein L13-1.....	AS13 2650	WB
RPL37 Ribosomal protein L37, cytoplasmic.....	AS12 2115	WB
Sar1 Secretion-associated and Ras-related protein 1.....	AS08 326	IG, WB
SIP1 Small basic intrinsic protein 1-1.....	AS09 495	ELISA, WB
SIP2 Small basic intrinsic protein 2-1.....	AS09 496	ELISA, WB
VPS26A Vacuolar protein sorting 26A.....	AS13 2632	WB
VPS29 Vacuolar protein sorting 29.....	AS13 2633	WB

Membrane transport Plasma membrane

Product name.....	Product number	Applications
AKT1 Potassium channel AKT1.....	AS09 516	WB
AtPCaP1 Arabidopsis thaliana plasma membrane cation-binding protein-1.....	AS10 931	WB
Ca2+-ATPase Calmodulin-stimulated calcium-ATPase.....	AS09 486	ELISA, WB
GORK Potassium channel GORK.....	AS14 2795	WB
H+ATPase Plasma membrane H+ATPase (chicken antibody).....	AS13 2671	WB
H+ATPase Plasma membrane H+ATPase.....	AS07 260	IF, IL, WB
KAT1 Potassium channel protein.....	AS17 4150	WB
KC1 potassium channel KAT3	AS09 515	WB
MIP1 Aquaporin, glycerol transport activity.....	AS15 2826	IG, WB
PDR8 ABC transporter G family member 36.....	AS09 471	ELISA, WB
PIP (PIP1;1, PIP1;2, PIP1;3, PIP1;4, PIP1;5) Aquaporins.....	AS09 487	WB
PIP1;1, PIP1;2, PIP1;3 Aquaporins.....	AS09 489	ELISA, WB
PIP1;3 Aquaporin, plasma membrane intrinsic protein 1-3.....	AS09 504	ELISA, WB
PIP1;3 Aquaporin, plasma membrane intrinsic protein 1-3	AS09 505	ELISA, WB
PIP2;1 Aquaporin, plasma membrane intrinsic protein 2-1.....	AS09 507	ELISA, WB
PIP2;1, PIP2;2, PIP2;3 Plasma membrane intrinsic protein 2-1,2-2,2-3.....	AS09 491	ELISA, WB
PIP2;1+PIP2;2 Aquaporin PIP2;1+PIP2;2.....	AS09 488	ELISA, WB
AKT1 Potassium channel AKT1.....	AS09 516	WB
PIP2;2 Plasma membrane aquaporin 2b.....	AS09 490	ELISA, WB
PIP2;3 Aquaporin, plasma membrane intrinsic protein 2-3.....	AS09 506	ELISA, IG, WB
PIP2;5 Aquaporin, plasma membrane intrinsic protein 2-5.....	AS09 508	ELISA, WB
PIP2;7 Plasma membrane aquaporin (N-terminal).....	AS09 469	ELISA, WB
PIP2-1-7 Plasma membrane aquaporin isoforms 1-7 (C-terminal).....	AS12 2110	WB
Sec6 Exocyst complex subunit.....	AS13 2686	WB
Sec8 Exocyst complex component SEC8.....	AS13 2708	WB
SLT2 Sodium sulfate transporter	AS07 244	WB
PDCB1 Plasmodesmata callose-binding protein 1 ** In testing.....	AS16 3149	WB

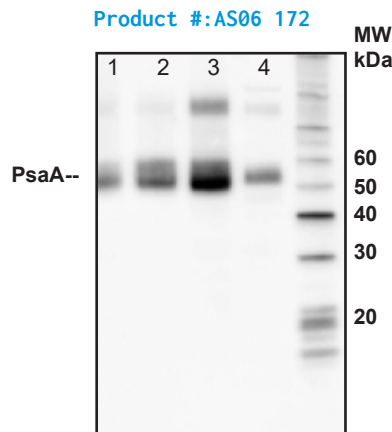
Membrane transport Vacuolar membrane

Product name.....	Product number	Applications
AtCCaP1 Vacuolar calcium-binding protein-related.....	AS09 483	ELISA, WB
Ligand-gated ion channel 1.3.....	AS09 475	ELISA, WB
MRP1, ABCC1 ABC transporter C family member 1.....	AS09 472	ELISA, WB
MTP1 Vacuolar Zn ²⁺ /H ⁺ antiporter.....	AS09 485	ELISA, WB
Na ⁺ /H ⁺ antiporter, sodium/hydrogen exchanger	AS09 484	ELISA, WB
NRT1.4 Nitrate transporter.....	AS09 473	ELISA, WB
TIP1 Tonoplast intrinsic protein 1-1.....	AS09 482	ELISA, WB
TIP1;1, TIP1;2 Tonoplast intrinsic protein 1-1, 1-2 (gamma).....	AS09 493	ELISA, WB
TIP1;1,TIP1;2 Tonoplast intrinsic protein1-1, 1-2 (gamma).....	AS09 492	ELISA, WB
TIP2 Tonoplast intrinsic protein 2;1, 2;2, 2;3.....	AS12 2619	WB
TIP2;1 (delta) Delta-VM23.....	AS09 494	ELISA, WB
TIP2;1 Tonoplast intrinsic protein 2-1.....	AS09 509	ELISA, WB
TIP2;2 Tonoplast intrinsic protein 2-2.....	AS09 510	ELISA, WB
TIP2;2 Tonoplast intrinsic protein 2-2 (C-terminal).....	AS09 511	ELISA, WB
V-ATPase Epsilon subunit of tonoplast H ⁺ ATPase.....	AS07 213	IHC, WB
V-ATPase Epsilon subunit of tonoplast H ⁺ ATPase-.....	AS09 577	WB
V-ATPase Epsilon subunit of tonoplast H ⁺ ATPase (affinity purified).....	AS09 577A	WB
V-ATPase, a Vacuolar H ⁺ ATPase, subunit a.....	AS09 466	ELISA, WB
V-ATPase, A Vacuolar H ⁺ -ATPase subunit A.....	AS09 467	ELISA, WB
V-ATPase, A Vacuolar H ⁺ -ATPase subunit A.....	AS09 502	ELISA, WB
V-ATPase, B Vacuolar H ⁺ -ATPase subunit B.....	AS14 2775	WB
V-ATPase, C Vacuolar H ⁺ -ATPase, subunit C (16 kDa).....	AS09 468	WB
V-ATPase, D Vacuolar H ⁺ -ATPase subunit D.....	AS09 497	ELISA, WB
V-ATPase, H Vacuolar H ⁺ -ATPase subunit H.....	AS09 499	ELISA, WB
V-PPase Vacuolar H ⁺ -pyrophosphatase.....	AS12 1849	WB
V-ATPase, a1 Vacuolar H ⁺ -ATPase subunit a isoform 1	AS14 2822	ELISA, WB
TPC1 Two pore calcium channel protein 1 ** In testing.....	AS16 4032	WB

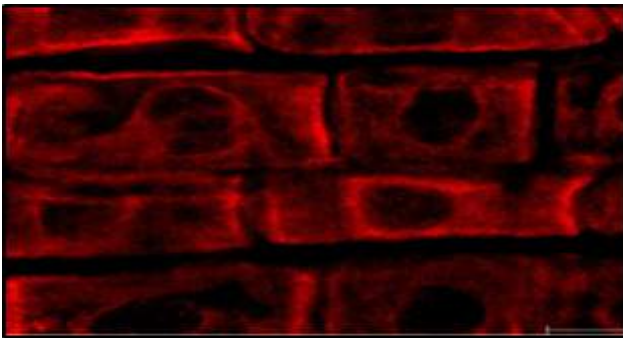
Nitrogen metabolism

Product name.....	Product number	Applications
Cat Catalase (peroxisomal marker).....	AS09 501	WB
GDH1 Glutamate dehydrogenase 1.....	AS05 068	IL, WB
GLN1 GLN2 GS1 GS2 glutamine synthetase global antibody.....	AS08 295	WB
GLN2 GS2, chloroplastic form of glutamine synthetase.....	AS08 296	WB
GlnA Glutamine synthetase	AS01 018	WB
GOGAT Glutamine oxoglutarate aminotransferase.....	AS07 242	WB
NifH Nitrogenase iron protein.....	AS01 021A	IF, IHC, WB
NodGS Nodulin / glutamate-ammonia ligase-like protein.....	AS15 3030	IF, IP, WB
NodGS Nodulin / glutamate-ammonia ligase-like protein.....	AS15 3030A	IF, IP, WB
NR Nitrate reductase, assimilatory.....	AS08 310	WB
NRT1.1 Nitrate transporter 1.1	AS12 2611	IL, WB
NRT2.1 Nitrate transporter 2.1.....	AS12 2612	WB
NtcA Global nitrogen regulator.....	AS12 1873	WB
Ornithine	AS09 598	ELISA
Urease.....	AS09 559	ELISA, IF, IHC, WB

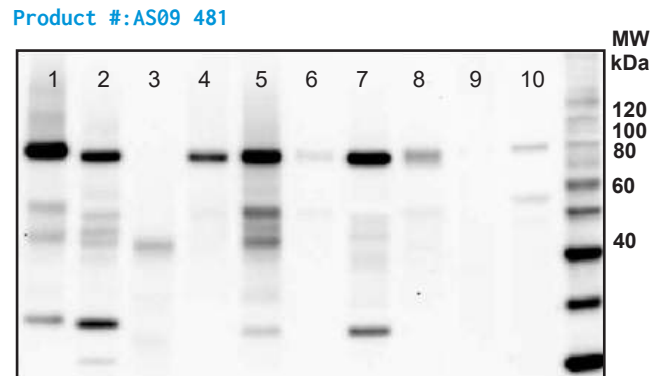
Application examples



WB using Agrisera PsaA antibody on 2 µg of total protein from (1) *A. thaliana* leaf, (2) *H. vulgare* leaf, (3) *C. reinhardtii* total cell, (4) *Synechococcus* sp. 7942 total cell.



BiP immunolocalization in 3-day-old *T. aestivum* roots. Courtesy Dr. Taras Pasternak, Freiburg University.



WB using Agrisera BiP antibody on 5 µg of total protein from *A. thaliana* (1), *H. vulgare* (2), *P. sativum* (3), *Z. mays* (4), *C. sativus* (5), *S. tuberosum* (6), *S. oleracea* (7), *S. lycopersicum* (8) *P. patens* (9)*, *C. reinhardtii* (10). BiP is detected at 80 kDa.

Photosynthesis ATP synthase

Product name.....	Product number	Applications
AtpA Alpha subunit of ATP synthase, chloroplastic.....	AS08 304	IP, WB
ATPase ATP synthase, whole enzyme.....	AS08 370	WB
AtpB Beta subunit of ATP synthase, chloroplastic + mitoch (chicken) antibody..	AS03 030	IL, WB
AtpB Beta subunit of ATP synthase, chloroplastic + mitoch (rabbit).....	AS05 085	BN-PAGE, IF, WB
AtpB Beta subunit of ATP synthase, mitochondrial.....	AS16 3976	BN-PAGE IF, WB
AtpC Gamma subunit of ATP synthase, chloroplastic.....	AS08 312	WB
AtpD CF1 delta subunit of ATP synthase, affinity purified.....	AS10 1590	WB
AtpD CF1 delta subunit of ATP synthase.....	AS10 1591	WB
AtpE Epsilon subunit of ATP synthase	AS10 1586	WB
AtpF CF0I subunit of ATP synthase	AS10 1604	WB
AtpG ATPsynthase subunit II b', chloroplastic.....	AS09 457	WB
AtpH ATP synthase subunit c, chloroplastic.....	AS05 071	WB
AtpH ATP synthase subunit c, chloroplastic.....	AS09 591	WB
AtpI CFoIV subunit of ATP synthase	AS10 1583	WB
CGL160 Conserved in green lineage 160.....	AS12 1853	WB
CGL40.....	AS13 2641	WB
PSA2 Photosystem I assembly factor 2.....	AS13 2654	IP, WB

Photosynthesis Biogenesis/architecture

Product name	Product number	Applications
ARC5 Dynamin-like protein ARC5	AS13 2676	WB
ARSA Targeting of tail-anchored proteins	AS15 3083	WB
ClpR4 ATP-dependent Clp protease proteolytic subunit-related protein 4, chloroplastic	AS16 4057	WB
ClpS ATP-dependent Clp protease adapter protein ClpS	AS17 4146	WB
ClpT1 ATP-dependent Clp protease ATP-binding subunit CLPT1, chloroplastic	AS16 4058	WB
CURT1A Curvature thylakoid 1A	AS08 316	2D BN/SDS-PAGE, WB
CYP38 Cyclophilin 38, peptidyl-prolyl cis-trans isomerase	AS10 1607	WB
DRP5B Dynamin related protein 5B	AS12 2634	WB
GUN4 Regulatory subunit of Mg-chelatase	AS15 3090	WB
MatK Maturase K	AS13 2720	WB
PAB Protein in chloroplast atpase biogenesis	AS15 2833	WB
PGL35 Plastoglobulin 35; FIB1a; FBN1a	AS06 116	ICC, WB
RBP40 38 kDa RNA-binding protein	AS14 2820	IP, WB
SVR4 Suppressor of variegation 4	AS13 2725	WB
SVR4-like Suppressor of variegation 4 - like	AS13 2726	WB
TAB3 Nucleus-encoded factor involved in PsaB translation	AS15 3089	WB
RPL33 50S ribosomal protein L33 (chloroplastic) ** In testing	AS16 4082	WB
RPL33 50S ribosomal protein L33 (chloroplastic) ** In testing	AS14 2780	WB
SRP43 Signal recognition peptide 43 ** In testing	AS12 2105	WB

Photosynthesis Carotenoid metabolism

Product name	Product number	Applications
IPP isomerase Isopentyl pyrophosphate isomerase	AS13 2710	WB
LCY Lycopene beta-cyclase (chloroplastic)	AS15 3079	WB
LUT1 Beta-carotene hydroxylase	AS15 3084	WB
LUT5 beta-carotene hydroxylase	AS15 3085	WB
LYC Lycopene beta cyclase (chloroplastic)	AS13 2709	WB
NtrC Thioredoxin reductase (TR/TRxR)	AS06 159	WB
NtrC Thioredoxin reductase (TR/TRxR)	AS07 243	WB
ZEP Zeaxanthin Epoxidase	AS08 289	WB
ZEP Zeaxanthin Epoxidase	AS15 3092	WB
PSY Phytoene synthase ** In testing	AS16 3991	WB

Photosynthesis Chaperones/Transport

Product name	Product number	Applications
CGE1 Alfa-CGE1, chloroplastic GrpE homolog	AS06 176	IP, WB
ClpB1 Chaperone protein ClpB1 (cyanobacterial)	AS16 4039	WB
ClpB2 Chaperone protein ClpB2 (cyanobacterial)	AS16 4040	WB
ClpB-P ClpB3	AS09 459	WB
ClpD Chaperone protein ClpD, chloroplastic	AS16 4048	WB
ClpP1 ATP-dependent Clp protease proteolytic subunit 1 (cyanobacterial)	AS16 4041	WB
ClpP2 ATP-dependent Clp protease proteolytic subunit 2 (cyanobacterial)	AS16 4042	WB
ClpP3 ATP-dependent Clp protease proteolytic subunit 3 (cyanobacterial)	AS16 4043	WB
DnaK Chloroplast stromal chaperone	AS07 270	WB

Photosynthesis Chaperones/Transport

Product name	Product number	Applications
LTP Vesicle-inducing protein in plastids (VIPP1)	AS06 145	WB
PAB Protein in chloroplast atpase biogenesis	AS15 2833	WB
Tic110 Chloroplast inner envelope membrane translocon complex	AS08 293	WB
Tic40 Inner envelope membrane translocon complex protein (chloroplast)	AS10 709	IF, WB
Toc159 Chloroplast outer envelope membrane translocon complex protein	AS07 239	IL, WB
Toc33 Chloroplast outer envelope membrane translocon complex protein	AS07 236	IP, WB
Toc34 Chloroplast outer envelope membrane translocon complex protein	AS07 235	ELISA, IP, WB
Toc34 Chloroplast outer envelope membrane translocon complex protein	AS07 237	ELISA, WB
Toc34 Chloroplast outer envelope membrane translocon complex protein	AS07 238	WB
Toc75 Outer chloroplast membrane translocon complex protein	AS08 292	WB
Toc75 Protein TOC75-3, chloroplastic, POTRA domain 1	AS08 345	FACS, IL, WB
Toc75 Protein TOC75-3, chloroplastic, POTRA domain 3	AS08 351	FACS, IL, WB
Toc75 Chloroplast outer envelope membrane translocon complex OEP75 protein **	AS06 150	WB

Photosynthesis Chlorophyll

Product name	Product number	Applications
ACD1 Accelerated cell death 1	AS11 1783	WB
CPX1 Coproporphyrinogen III oxidase, isoform 1	AS06 123	WB
CPX2 Coproporphyrinogen III oxidase, isoform 2	AS05 081	WB
CRD1 Cyanobacterial homolog of plant CHL27 cyclase	AS06 122	WB
G4 Chlorophyll synthase (chloroplastic)	AS14 2793	WB
GluTR Glutamyl -tRNA reductase	AS10 689	WB
GUN4 Regulatory subunit of Mg-chelatase	AS15 3090	WB
HemC Porphobilinogen-Deaminase (PBG)	AS08 375	WB
HemF Coproporphyrinogen III oxidase	AS07 226	WB
HemH Protoporphyrin ferrochelatase	AS07 228	WB
HemH Protoporphyrin ferrochelatase (cyanobacterial)	AS10 693	WB
HemY Protoporphyrinogen oxidase	AS07 227	WB
NtrC Thioredoxin reductase (TR/TRxR)	AS06 159	WB
NtrC Thioredoxin reductase (TR/TRxR)	AS07 243	WB
POR Protochlorophyllide oxidoreductase	AS05 067	WB

Photosynthesis Electron transfer

Product name	Product number	Applications
Cyt b6/PetB Thylakoid membrane cytochrome b6 protein	AS15 2878	WB
Cyt c6 Thylakoid lumen cytochrome c6 protein	AS06 202	WB
Cyt f Cytochrome f protein (PetA) of thylakoid Cyt b6/f-complex	AS06 119	WB
Cyt f Cytochrome f protein (PetA) of thylakoid Cyt b6/f-complex	AS08 306	IG, WB
Fd Ferredoxin 1 (chloroplastic)	AS11 1757	WB
FDX1 Ferredoxin	AS06 121	WB
Fdx2 Ferredoxin 2	AS16 3114	WB
Fdx3 Ferredoxin 3	AS07 224	WB
Fdx6 Ferredoxin 6	AS07 223	WB
FNR Ferredoxin-NADP+-oxidoreductase	AS15 2909	WB
NDC1 Alternative NAD(P)H-ubiquinone oxidoreductase C1	AS16 3931	WB

Photosynthesis Electron transfer

Product name	Product number	Applications
NdhF NAD(P)H dehydrogenase subunit 5 (chloroplastic)	AS13 2711	WB
NdhH NAD(P)H-quinone oxidoreductase subunit H (chloroplastic)	AS13 2712	WB
NdhB NAD(P)H-quinone oxidoreductase subunit B (chloroplastic)	AS16 4064	WB
NdhS NAD(P)H-quinone oxidoreductase subunit S (chloroplastic)	AS16 4066	WB
NdhH NAD(P)H-quinone oxidoreductase subunit H (chloroplastic)	AS16 4065	WB
PC Plastocyanin	AS06 141	IG, WB
PetC Rieske iron-sulfur protein of Cyt b6/f complex	AS08 330	WB
PetC Rieske iron-sulfur protein of Cyt b6/f complex, protein standard	AS08 330S	WB
PGR1 PGR5-like protein 1A (chloroplastic)	AS10 725	WB
Pre-apoplastocyanin	AS06 118	WB
PrxQ Peroxiredoxin, thioredoxin reductase	AS05 093	WB
PsbE Alfa subunit of Cytochrome b559 of PSII	AS06 112	WB
PTOX Plastid terminal oxidase	AS16 3692	WB
PGR5 Protn gradient regulation 5 ** In testing	AS16 3985	IP, WB

Photosynthesis GreenCut

Product name	Product number	Applications
At2g21960	AS15 2834	WB
CGL160 Conserved in green lineage 160	AS12 1853	WB
CGL40	AS13 2641	WB
CGL78 YCF54	AS10 936	WB
CNfu1 NifU-like protein 1 (chloroplastic)	AS13 2642	WB
PSA2 Photosystem I assembly factor 2	AS13 2654	IP, WB
PSB33 Rieske (2Fe-2S) domain-containing protein	AS12 1852	WB
RIQ1 Reduced induction of non-photochemical quenching 1	AS15 2835	WB
SNE18 Rossmann-fold NAD(P)-binding domain-containing protein	AS12 2118	WB
VDR1 Violaxanthin de-epoxidase-related protein	AS12 2117	WB
CGLD27B (At5g11840) ** In testing	AS14 2762	WB
CPLD11 ** In testing	AS10 937	WB

Photosynthesis Kinases

Product name	Product number	Applications
Hik29 sensor histidine kinase	AS10 1600	WB
STN8 Serine/threonine-protein kinase STN8 (chloroplastic)	AS10 1601	WB
STT7 Serine/threonine-protein kinase STT7 (chloroplastic)	AS15 3080	WB
TAK1 Serine/threonine protein kinase TAK1	AS10 1612	WB
BSK6 Protein kinase protein with tetratricopeptide repeat domain (At3g54030) **AS11 1793	AS11 1793	WB
CK2 alpha Casein kinase 2 subunit alpha ** In testing	AS16 3212	WB
CK2 beta Casein kinase 2 subunit beta ** In testing	AS16 3213	WB
cpCK2 Casein kinase II subunit alpha (chloroplastic) ** In testing	AS16 3211	WB

Photosynthesis LHC

Product name	Product number	Applications
95 kDa Lcm (phycobilisome - to- thylakoid core linker with phycocyanobilin)	AS08 281	WB
APC Allophycocyanin alpha and beta	AS08 277	IL, WB
b-PE Phycoerythrobilin	AS08 279	WB
B-PE Phycoerythrobilin and phycourobilin	AS08 280	WB
HliA High light inducible protei	AS10 1616	WB
HliD High light inducible protein	AS10 1610	WB
Lhc1 PS 1 light harvesting holo-complex	AS08 282	WB
Lhca1 PSI type I chlorophyll a/b-binding protein	AS01 005	WB
Lhca2 PSI type II chlorophyll a/b-binding protein	AS01 006	WB
Lhca3 PSI type III chlorophyll a/b-binding protein	AS01 007	WB
Lhca4 PSI type IV chlorophyll a/b-binding protein	AS01 008	WB
Lhca5 PSI type V chlorophyll a/b-binding protein	AS05 082	WB
Lhcb1 LHCII type I chlorophyll a/b-binding protein	AS01 004	WB
Lhcb1 LHCII type I chlorophyll a/b-binding protein (<i>Arabidopsis</i> specific)	AS09 522	WB
Lhcb1-P LHCII type I chlorophyll a/b-binding protein, phopshorylated	AS13 2704	WB
Lhcb2 LHCII type II chlorophyll a/b-binding protein	AS01 003	IP, WB
Lhcb2-P LHCII type II chlorophyll a/b-binding protein, phosphorylated	AS13 2705	WB
Lhcb3 LHCII type III chlorophyll a/b-binding protein	AS01 002	WB
Lhcb4 CP29 (Lhcb4) homolog, Chlamydomonas	AS06 117	WB
Lhcb4 CP29 (Lhcb4) homolog, <i>Ostreococcus tauri</i>	AS09 512	WB
Lhcb4 CP29 chlorophyll a/b binding protein of plant PSII	AS04 045	WB
Lhcb5 CP26 (Lhcb5) homolog, Chlamydomonas	AS09 407	WB
Lhcb5 CP26 (Lhcb5) homolog, <i>Ostreococcus tauri</i>	AS09 513	WB
Lhcb5 CP26 chlorophyll a/b-binding protein of plant PSII	AS01 009	IHC, WB
LHCb9 Light-harvesting complex	AS15 3088	WB
Lhcbm5 Chlorophyll a-b binding protein of LHCII	AS09 408	WB
LHCSR1	AS14 2819	WB
LHCSR1 (<i>Physcomitrella patens</i>)	AS15 3081	WB
LHCSR3	AS14 2766	ELISA, WB
LHL4 LHC-like protein 4	AS07 250	WB
R-PC R-phycocyanin	AS08 278	WB
Exon4b ** In testing	AS15 2986	WB
Lhcb6 CP24 chlorophyll a/b-binding protein of plant PSII	AS01 010	WB
Lhcb7 ** In testing	AS15 2939	WB
Lhcb7 (<i>Arabidopsis</i>) ** In testing	AS15 2938	WB

Photosynthesis Light acclimation

Product name	Product number	Applications
CURT1A Curvature thylakoid 1A	AS08 316	WB, 2D BN/SDS-PAGE
Elip Early light induced protein	AS06 147A	WB
Elip2 Early light inducible protein 2	AS03 036	WB
HliA High light inducible protein	AS10 1616	WB
Lhcb1 LHCII type I chlorophyll a/b-binding protein	AS01 004	WB
Lhcb1 LHCII type I chlorophyll a/b-binding protein (<i>Arabidopsis</i> specific)	AS09 522	WB
Lhcb1-P LHCII type I chlorophyll a/b-binding protein, phopshorylated	AS13 2704	WB
Lhcb2 LHCII type II chlorophyll a/b-binding protein	AS01 003	IP, WB
Lhcb2-P LHCII type II chlorophyll a/b-binding protein, phosphorylated	AS13 2705	WB
PGR1 PGR5-like protein 1A, chloroplastic	AS10 725	WB
RIQ1 Reduced induction of non-photochemical quenching 1	AS15 2835	WB
STN7 Serine/threonine-protein kinase STN7, chloroplastic	AS10 1611	WB
STN7 Serine/threonine-protein kinase STN7 (chloroplastic)	AS16 4098	WB

Photosynthesis Light acclimation

Product name	Product number	Applications
STN8 Serine/threonine-protein kinase STN8, chloroplastic	AS10 1601	WB
STT7 Serine/threonine-protein kinase STT7, chloroplastic	AS15 3080	WB
VDE Violaxanthin de-epoxidase	AS15 3091	WB
VDR1 Violaxanthin de-epoxidase-related protein	AS12 2117	WB
ZEP Zeaxanthin Epoxidase	AS08 289	WB
ZEP Zeaxanthin Epoxidase	AS15 3092	WB
PPH1/TAP38 Protein phosphatase 1	AS16 4084	WB
PBCP Photosystem II core phosphatase ** In testing	AS16 4085	WB
PGR5 Protn gradient regulation 5 ** In testing	AS16 3985	IP, WB

Photosynthesis Proteases

Product name	Product number	Applications
ClpC Chloroplastic form of HSP100	AS01 001	IHC, IP, WB
ClpP1 ATP-dependent Clp protease proteolytic subunit 1, chloroplastic	AS16 4049	WB
ClpP3 ATP-dependent Clp protease proteolytic subunit 3, chloroplastic	AS16 4050	WB
ClpP4 ATP-dependent Clp protease proteolytic subunit 4, chloroplastic	AS16 4051	WB
ClpP5 ATP-dependent Clp protease proteolytic subunit 5, chloroplastic	AS16 4052	WB
ClpP6 ATP-dependent Clp protease proteolytic subunit 6, chloroplastic	AS16 4053	WB
ClpP6 Chloroplast ClpP6 proteolytic subunit	AS13 2655	WB
ClpR1 ATP-dependent Clp protease proteolytic subunit-related protein 1,	AS16 4054	WB
ClpR2 ATP-dependent Clp protease proteolytic subunit-related protein 2,	AS16 4055	WB
ClpR3 ATP-dependent Clp protease proteolytic subunit-related protein 3,	AS16 4056	WB
ClpR4 ATP-dependent Clp protease proteolytic subunit-related protein 4,	AS16 4057	WB
ClpT1 ATP-dependent Clp protease ATP-binding subunit CLPT1, chloroplastic	AS16 4058	WB
Deg1 Chloroplastic DegP-type serine protease 1	AS07 246	WB
Deg2 Chloroplastic DegP-type serine protease 2	AS10 1581	WB
Deg5 Protease Do-like 5, chloroplastic	AS10 703	WB
Deg8 Protease Do-like 8, chloroplastic	AS14 2767	WB
DegP7 Protease Do-like 7	AS11 1756	WB
FtsH1 + FtsH5 ATP-dependent zinc metalloprotease FtsH1 + FtsH5 (chloroplastic)	AS16 3930	WB
FtsH2 + FtsH8 ATP-dependent zinc metalloprotease FtsH2 + FtsH8 (chloroplastic)	AS16 3929	WB
FtsH6 ATP-dependent zinc metalloprotease FtsH6 (chloroplastic)	AS05 094A	WB
FtsH9 ATP-dependent zinc metalloprotease FtsH9 (chloroplastic)	AS06 130	WB
HhoA Protease HhoA (Sll1427; Cyanobase) (100 ul)	AS10 1619	WB
HhoB Protease HhoB (Sll1679; Cyanobase)	AS10 1620	WB
HtrA Putative serine protease	AS10 1602	WB
pClpP Chloroplastic ATP-dependent Clp protease proteolytic subunit 1	AS15 3077	WB
PPIase CYP37 peptidyl-prolyl cis-trans isomerase CYP37, chloroplastic	AS10 1589	WB
sII0408 Putative thylakoid lumen PPIase	AS10 1594	WB
SppA1 Signal peptide peptidase (higher plants)	AS10 1613	WB
SppA2 Signal peptide peptidase (cyanobacterial)	AS10 1624	WB
slr1239 PntA ** In testing	AS15 2910	WB

Photosynthesis PSI (Photosystem I)

Product name	Product number	Applications
Hcf101 High chlorophyll fluorescence phenotype protein	AS06 163	IL, WB
PsaA PSI-A core protein of photosystem I	AS06 172	IG, WB
PsaB PSI-B core subunit of photosystem I	AS10 695	WB
PsaC PSI-C core subunit of photosystem I	AS10 939	WB
PsaD PSI-D subunit of photosystem I	AS09 461	IP, WB
PsaE PSI-E subunit of photosystem I	AS04 047	WB
PsaE PSI-E subunit of photosystem I	AS08 324A	WB
PsaF PSI-F subunit of photosystem I	AS06 104	WB
PsaG PSI-G subunit of photosystem I	AS04 048	IG, WB
PsaG PSI-G subunit of photosystem I, Chlamydomonas	AS06 144	WB
PsaH PSI-H subunit of photosystem I	AS06 105	WB
PsaH PSI-H subunit of photosystem I, Chlamydomonas	AS06 143	WB
PsaK PSI-K subunit of photosystem I	AS04 049	WB
PsaL PSI-L subunit of photosystem I	AS06 108	WB
PsaN PSI-N subunit of photosystem I	AS06 109	WB
PsaO PSI-O subunit of photosystem I	AS04 050	WB
PSA3 Photosystem I Assembly 3	AS15 2872	WB
TAB3 Nucleus-encoded factor involved in PsaB translation	AS15 3089	WB
Ycf3 Photosystem I assembly protein ycf3	AS07 273	WB
Ycf4 Photosystem I assembly protein ycf4	AS07 274	WB

Photosynthesis PSII (Photosystem II)

Product name	Product number	Applications
BBY PSII-enriched membranes	AS16 3979	see web
CP43' IsiA homolog of plant CP43	AS06 111	WB
CYP38 Cyclophilin 38, peptidyl-prolyl cis-trans isomerase (100 ul)	AS10 1607	WB
CYP38 Cyclophilin 38, peptidyl-prolyl cis-trans isomerase (300 ul)	AS10 1618	WB
Psb29 Thylakoid membrane formation 1, THF1	AS07 240	IP, WB
PsbA D1 protein of PSII, C-terminal	AS05 084	WB
PsbA D1 protein of PSII, C-terminal	AS01 016	WB
PsbA D1 protein of PSII, DE-loop	AS10 704	WB
PsbA D1 protein of PSII, N-terminal	AS11 1786	WB
PsbA D1 protein of PSII, phosphorylated	AS13 2669	WB
PsbB CP47 protein of PSII	AS04 038	WB
PsbC CP43 protein of PSII	AS11 1787	WB
PsbD D2 protein of PSII	AS06 146	WB
PsbE Alfa subunit of Cytochrome b559 of PSII	AS06 112	WB
PsbF Beta subunit of Cytochrome b559 of PSII	AS06 113	WB
PsbH Small subunit H of PSII	AS06 157	IP, WB
PsbI Small subunit I of PSII (cyanobacterial)	AS10 692	WB
PsbI Small subunit I of PSII	AS06 158	WB
PsbN Photosystem II reaction center protein N	AS14 2786	WB
Psb0 33 kDa of the oxygen evolving complex (OEC) of PSII	AS06 142-33	WB
Psb0 33 kDa of the oxygen evolving complex (OEC) of PSII	AS05 092	IHC, IP, WB
Psb01 33 kDa of the oxygen evolving complex (OEC) of PSII	AS14 2824	IP, WB
Psb02 33 kDa of the oxygen evolving complex (OEC) of PSII	AS14 2825	IP, WB
PsbP 23 kDa protein of the oxygen evolving complex (OEC) of PSII	AS06 142-23	WB
PsbP 23 kDa protein of the oxygen evolving complex (OEC) of PSII	AS08 305	WB
PsbP 23 kDa protein of the oxygen evolving complex (OEC) of PSII	AS06 167	WB
PsbP-like protein (sll1418) cyanobacterial	AS10 682	WB
PsbQ 16 kDa protein of the oxygen evolving complex (OEC) of PSII	AS06 142-16	WB
PsbR 10 kDa protein of PSII	AS05 059	WB
PsbS 22 kDa Lhc-like PSII protein (chicken antibody)	AS03 032	WB

Photosynthesis PSII (Photosystem II)

Product name	Product number	Applications
PsbS 22 kDa Lhc-like PSII protein (rabbit antibody)	AS09 533	WB
PsbW Small subunit W of PSII	AS05 060	WB
PsbX Small subunit X of PSII	AS05 066	WB
PsbY Small subunit Y of PSII	AS06 114	WB
PsbZ ycf9 protein of PSII	AS06 115	WB
PsbTn Tn protein of PSII	AS06 171	WB
Tlp18.3 Thylakoid lumen 18.3 kDa protein	AS08 369	WB

Photosynthesis RUBISCO/C metabolism

Product name	Product number	Applications
CAH3 Carbonic anhydrase	AS05 073	IF, IG, WB
CPN60A1 Chaperonin 60 subunit alpha 1, chloroplastic	AS12 2613	WB
CsoS1A/B/C Major carboxysome shell protein 1A, AB, 1C	AS14 2760	WB
EPSP synthase 3-phosphoshikimate 1-carboxyvinyltransferase (chloroplastic)	AS14 2782	WB
Lci5 Low carbon dioxide induced protein number 5	AS05 090	IHC, WB
PEPC Phosphoenolpyruvate carboxylase	AS09 458	IL, WB
PEPCK PEP carboxykinase	AS07 241	WB
PRK ribulose-5-P-kinase Phosphoribulokinase	AS07 257	WB
RA Rubisco activase	AS10 700	WB
RAF2 Rubisco accumulation factor 2	AS13 2729	WB
Rbcl Rubisco large subunit, form I	AS01 017	IL, WB
Rbcl Rubisco large subunit, form I and form II	AS03 037	IF, IG, TP, WB
Rbcl II Rubisco large subunit, form II	AS15 2955	WB
RbcS Rubisco small subunit (SSU)	AS07 259	WB
RbcS Rubisco small subunit (SSU) (affinity purified)	AS07 259A	ELISA, WB
Rubisco 557 kDa hexadecamer	AS07 218	IL, WB
Rubisco ELISA quantitation kit	AS15 2994	WB
SBPase Sedoheptulose-1,7-bis phosphatase	AS15 2873	WB
TKL1 Transketolase (chloroplastic)	AS15 2903	IP, WB
Trxf1/2 Thioredoxin F1/F2 (chloroplastic)	AS14 2808	WB
TrxM1/M2 Thioredoxin M1/M2 (chloroplastic)	AS14 2809	WB
IctB Putative bicarbonate transporter	AS13 2702	WB
PEPC1 Phosphoenolpyruvate carboxylase isoform 1 ** In testing	AS15 2993	IL, WB

Photosynthesis Sucrose metabolism

Product name	Product number	Applications
BAM1 Beta amylase 1 (chloroplastic)	AS15 2895	WB
cFBPase Cytosolic fructose-1,6-bisphosphatase	AS04 043	WB
GAPC1/2 Glyceraldehyde-3-phosphate dehydrogenase	AS15 2894	WB
GAPC2 Glyceraldehyde-3-phosphate dehydrogenase	AS13 2727	WB
SPS Sucrose phosphate synthase (maize)	AS06 185	IL, WB
SPS Sucrose phosphate synthase, global	AS03 035A	WB
SUS1 Sucrose synthase 1	AS15 2830	WB
UAGPase UDP-GlcNAc pyrophosphorylase	AS14 2829	WB
UGPase UDP-glucose pyrophosphorylase (cytoplasm marker)	AS05 086	IL, WB
UGPase UDP-glucose pyrophosphorylase (cytoplasm marker) (<i>Hordeum vulgare</i>)	AS14 2813	WB
SUS4 Sucrose synthase 4 **	AS13 2748	WB

Plant pathogens Fungi

Product name	Product number	Applications
Aspergillus niger, Serum (0.1 ml)	AS11 1636	ELISA
Aspergillus niger, Total IgG (0.2 mg)	AS11 1718	ELISA
Ergotamine, Serum (0.1 ml)	AS11 1729	ELISA
Ergotamine, Total IgG (0.2 mg)	AS11 1650	ELISA
Gaeumannomyces graminis, Serum (0.1 ml)	AS11 1666	ELISA
Gaeumannomyces graminis, Total IgG (0.2 mg)	AS11 1688	ELISA
Ramularia collo-cygni, Serum (0.1 ml)	AS11 1676	ELISA
Ramularia collo-cygni, Total IgG (0.2 mg)	AS11 1725	ELISA
SOBIR1 Suppressor of BIR1 **	AS16 3204	IP, WB
SOBIR1 Suppressor of BIR1 **	AS16 3959	IP, WB
SUS4 Sucrose synthase 4 **	AS13 2748	WB

Plant pathogens Herbicides

Product name	Product number	Applications
2b protein [Cucumber mosaic virus]	AS16 3981	WB
2b protein [Tomato aspermy virus]	AS16 3982	WB
p15 [Peanut clump virus]	AS16 3983	WB
TSWV Tomato Spotted Wilt Virus (Glycoprotein G2)	AS16 3138	ELISA, IHC, WB
TSWV Tomato Spotted Wilt Virus (Glycoprotein G1)	AS16 3145	ELISA, IHC, WB
TYLCV C1 Tomato yellow leaf curl virus coat protein C1	AS15 3055	IF
TYLCV C2 Tomato yellow leaf curl virus coat protein C2	AS15 3056	IF
TYLCV C3 Tomato yellow leaf curl virus coat protein C3	AS15 3057	IF
TYLCV C4 Tomato yellow leaf curl virus coat protein C4	AS15 3058	IF
TYLCV CP Tomato yellow leaf curl virus coat protein 30 kDa	AS15 3048	IF, WB
TYLCV V2 Tomato yellow leaf curl virus coat protein V2	AS15 3059	IL, WB
Ramularia collo-cygni, Serum (0.1 ml)	AS11 1676	ELISA
Ramularia collo-cygni, Total IgG (0.2 mg)	AS11 1725	ELISA
SOBIR1 Suppressor of BIR1 ** In testing	AS16 3204	IP, WB
SOBIR1 Suppressor of BIR1 ** In testing	AS16 3959	IP, WB
SUS4 Sucrose synthase 4 ** In testing	AS13 2748	WB

Protein modifications

Product name	Product number	Applications
P-Tyr Phosphotyrosine	AS10 705	IF, IHC, IP, WB
RD N-terminal arginylation	AS15 3050A	Dot
RE N-terminal arginylation	AS15 3050	Dot
UBQ11 Ubiquitin	AS08 307	WB
UBQ11 Ubiquitin (affinity purified)	AS08 307A	WB

Toxins - Insecticides

Product name	Product number	Applications
Chlorpyrifos	AS13 2736	ELISA, IAC
Chlorpyrifos OVA-conjugated (antigen)	AS13 2736C	ELISA
Fenitrothion	AS13 2738	ELISA, IAC
Pirimiphos	AS13 2743	ELISA, IAC

Toxins - Marine toxins

Product name.....	Product number	Applications
STX Saxitoxin, Serum (0.1ml).....	AS11 1663	ELISA
STX saxitoxin, Total IgG (0.5 mg).....	AS11 1647	ELISA

Toxins - Mycotoxins

Product name.....	Product number	Applications
Aflatoxin B1.....	AS15 2851	ELISA, CGT
Aflatoxin B1, Serum (0.1 ml).....	AS11 1662	ELISA
Aflatoxin B1, Total IgG (0.5 mg).....	AS11 1733	ELISA
Aflatoxin M1.....	AS14 2801	ELISA
Aflatoxin M1, Serum (0.1 ml)	AS11 1668	ELISA
Aflatoxin M1, Total IgG (0.5 mg).....	AS11 1680	ELISA
Aflatoxin M1, Total IgG (0.5 mg).....	AS15 2827	ELISA
Aflatoxin M1, Total IgG (0.5 mg).....	AS15 2828	ELISA
Benzophenone.....	AS15 2854	ELISA, CGT
BoNT-A Botulinum toxin A.....	AS16 4086	ELISA
BoNT-B Botulinum toxin B.....	AS16 4087	ELISA
BoNT-E Botulinum toxin E.....	AS16 4088	ELISA
Deoxynivalenol, BSA conjugated (0.5 mg) (antigen).....	AS16 3962	IF, WB
DON Deoxynivalenol, Total IgG (0.2 mg).....	AS11 1711	ELISA
DON Deoxynivalenol (monoclonal).....	AS16 3843	ELISA, IAC, Rapid Te
DON Deoxynivalenol, Serum (0.1 ml).....	AS11 1654	ELISA
DON Deoxynivalenol (Vomitoxin) ELISA kit.....	AS16 4028	ELISA
Ochratoxin A.....	AS15 2852	ELISA, ID
Ochratoxin A, Serum (0.1 ml).....	AS11 1671	ELISA
Ochratoxin A, Total IgG (0.5 mg)	AS11 1695	ELISA
Patulin, Serum (0.1 ml).....	AS11 1732	ELISA
Patulin, Total IgG (0.2 mg).....	AS11 1645	ELISA
Rubellin, Serum (0.1 ml)	AS11 1652	ELISA
Rubellin, Total IgG (0.2 mg).....	AS11 1703	ELISA
Total Aflatoxins	AS15 2850	ELISA, IAC, IG
Vomitoxin.....	AS15 2988	ELISA, IAC, IG
ZA Zearalenone, Total IgG (0.5 mg).....	AS11 1742	ELISA
ZEA Zearalenone, Serum (0.1 ml)	AS11 1736	ELISA
Zearalenone.....	AS15 2853	ELISA, IAC, IG

Toxins Plant toxins/Other compounds

Product name.....	Product number	Applications
Hellebrin.....	AS11 1740	ELISA
Hellethionin.....	AS10 1626	ELISA, WB
Acrylamid Prop-2-enamide.....	AS13 2732	IAC
Alkylphenols (nonylphenol; octylphenol).....	AS13 2733	ELISA, IAC
Atrazine 2-chloro-4-(ethylamino)-6-(isopropylamino)-s-triazine.....	AS13 2734	ELISA, IAC
Bisphenol A.....	AS16 4029	ELISA
Clofibrate.....	AS13 2737	ELISA, IAC
Glyphosate.....	AS13 2739	ELISA, IAC
Ibuprofen.....	AS13 2740	ELISA, IAC
MTBE Methyl-tert-butylether.....	AS13 2741	IAC
Naproxen.....	AS13 2742	ELISA, IAC
RTA Ricin toxic A chain.....	AS17 4143	ELISA
RTB Ricin toxic B chain.....	AS17 4144	ELISA

Rapid Western Blotting

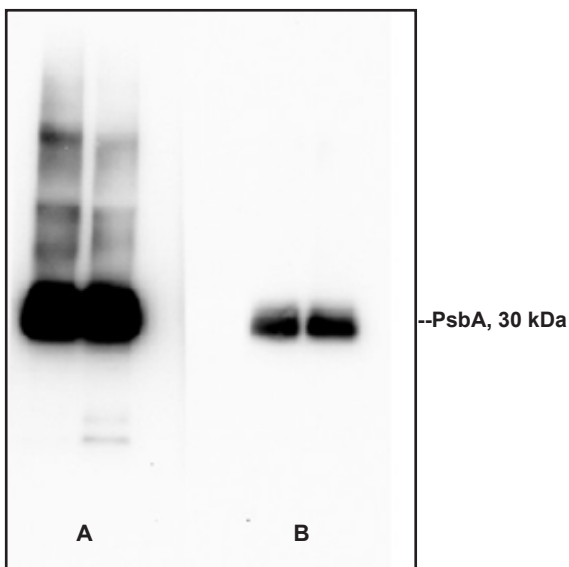
Product name.....	Product number	Applications
Agrisera IncuBlocker (rabbit antibody, 2x100 ml).....	AS16 3111	WB
Agrisera IncuBlocker (rabbit antibody, 2x1L).....	AS16 3111-1L	WB
Agrisera IncuBlocker (rabbit antibody, 2x20 ml trial pack).....	AS16 3111-20	WB
Agrisera IncuBlocker Wash Buffer (100 ml).....	AS16 3696	WB
Agrisera IncuBlocker Wash Buffer (1L).....	AS16 3696-1L	WB
Agrisera IncuBlocker (chicken antibody).....	AS16 3214	WB
Agrisera IncuBlocker (mouse antibody).....	AS16 3215	WB

Detection reagents ECL

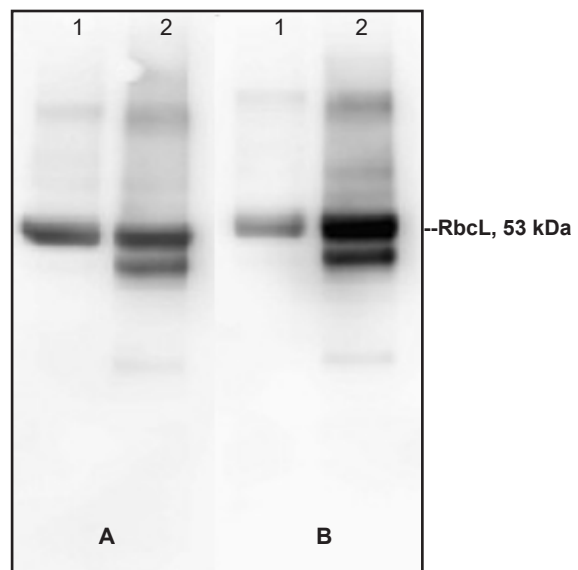
Product name.....	Product number	Applications
Agrisera ECL kit (Bright/SuperBright).....	AS16 ECL-SN	WB
Agrisera ECL kit (Bright/SuperBright) (10 ml trial pack).....	AS16 ECL-SN-10	WB
Agrisera ECL kit (Bright/SuperBright) (1L).....	AS16 ECL-SN-1L	WB
AgriseraECL Bright (10 ml trial pack).....	AS16 ECL-N-10	WB
AgriseraECL Bright (100 ml).....	AS16 ECL-N-100	WB
AgriseraECL Bright (1L).....	AS16 ECL-N-1L	WB
AgriseraECL SuperBright (10 ml trial pack).....	AS16 ECL-S-10	WB
AgriseraECL SuperBright (100 ml).....	AS16 ECL-S-100	WB

Application example

Product #:AS16 ECL



Comparison of Agrisera ECL SuperBright (A) and Agrisera ECL Bright (B). 10 µg of total protein from *A. thaliana* leaf (1), *H. vulgare* leaf (2).



Comparison of Agrisera ECL SuperBright (B) and Competitor's ECL (A). 10 µg of total protein from *A. thaliana* leaf (1), *H. vulgare* leaf (2).

Detection reagents ELISA

Product name	Product number	Applications
Agrisera HRP-Conjugate/Protein Stabilizer (100 ml)	AS15 HRPstab-100	ELISA
Agrisera HRP-Conjugate/Protein Stabilizer (10 ml)	AS15 HRPstab	ELISA
AgriseraTMB Diluent (100 ml)	AS15 Diluent	ELISA
AgriseraTMB HRP Substrate (10 ml)	AS15 TMB-HRP-10	ELISA
AgriseraTMB HRP Substrate (100 ml)	AS15 TMB-HRP	ELISA
AgriseraTMB HRP Substrate (1L)	AS15 TMB-HRP-1L	ELISA
Streptavidin HRP Conjugated, for ELISA	AS15 2860	ELISA

Bacterial and Fungal antibodies

Product name	Product number	Applications
ADH/ALDH Alcohol/acetaldehyde dehydrogenase, bacterial/algal	AS10 748	WB
ADK Adenylate kinase	AS16 3155	WB
ATPase AAA2 domain	AS11 1754	WB
AtpB Beta subunit of ATP synthase, chloroplastic + mitoch (rabbit antibody)	AS05 085	BN-PAGE, IF, WB
AtpB Beta subunit of ATP synthase, mitochondrial	AS16 3976	BN-PAGE, IF, WB
beta-1,4-glucosidase (hyperthermophilic enzyme)	AS15 3093	WB
Beta-lactamase	AS15 2846	ELISA, CGT, WB
Candidia albicans	IMS01-140-328	ELISA
CBP CREB-binding protein homolog	AS13 2730	WB
CoQ7 Coenzyme Q biosynthesis protein 7	AS05 076	WB
CpxA Conjugative plasmid expression	AS13 2653	WB
CsoS1A/B/C Major carboxysome shell protein 1A, AB, 1C	AS14 2760	WB
DNA Damage (8-OHdG) ELISA kit	AS15 2887	WB
DnaJ (Yersinia pseudotuberculosis)	AS15 3072	WB
DnaK	AS15 3073	WB
DON Deoxynivalenol (Vomitoxin) ELISA kit	AS16 4028	WB
Endo-beta-1,4 xylanase (hyperthermophilic enzyme)	AS15 3087	WB
Enterobacter cloacae	IMS01-139-329	ELISA
ExoS Exoenzyme S	AS05 056	WB
Fe-hydrogenase beta subunit (hyperthermophilic enzyme)	AS15 3086	WB
FnCel5A Endo-beta-1,4 glucanase (hyperthermophilic enzyme)	AS15 3094	WB
Francisella tularensis	AS16 4035	WB
FtsZ Procaryotic cell division GTPase	AS10 715	IF, WB
GTA MCP Gene Transfer Agent (GTA) major capsid protein (MCP)	AS08 365	WB
HDEL Endoplasmic reticulum retention signal	AS10 683	IF, IG, WB
Helicobacter pylori	AS01 020	ELISA, IL, WB
ICL Isocitrate lyase	AS10 713	WB
KatG Catalase peroxidase (HPI), cyanobacterial	AS08 374	WB
KDEL Endoplasmic reticulum retention signal	AS13 2665	IHC, WB
KDEL Endoplasmic reticulum retention signal, HRP conjugated	AS15 3016	IHC, WB
LacI Lactose operon repressor	AS16 3144	WB
Methylated Lysine	AS15 3021	ELISA, IHC, IP, WB
Mycoplasma bovis, Serum (100 ul)	AS11 1672	ELISA
Mycoplasma bovis, Total IgG (0.5 mg)	AS11 1724	ELISA
NpHR halorhodopsin	AS12 1851	IF, WB
Penicillin G, Serum (0.1ml)	AS11 1642	ELISA
PEPC Phosphoenolpyruvate carboxylase	AS09 458	IL, WB
Peptostreptococcus magnus Protein L	IMS02-136-331	WB
Pseudomonas aeruginosa	IMS01-133-332	WB
RFA Baker's yeast replication factor A	AS07 214	ChIP, IP, WB
Rnr1 Ribonucleoside-diphosphate reductase large subunit	AS16 3639	WB
Rnr3 Ribonucleoside-diphosphate reductase large chain 2	AS09 574	WB
RPS12 Ribosomal protein S12 (chloroplastic)	AS12 2114	WB

Bacterial and Fungal antibodies

Product name	Product number	Applications
RPS14 40S ribosomal protein S14-1	AS12 2111	WB
Sml1 Suppressor of Mec1 lethality	AS10 847	WB
<i>Staphylococcus aureus</i>	AS15 2849	ELISA, IAC, WB
<i>Staphylococcus aureus</i>	AS15 2849	ELISA, IAC, WB
Staphylococcal Protein A	IMS02-008-333	ELISA, WB
Streptococcal Protein G	IMS02-109-334	WB
SurA SurA	AS10 798	WB
Tylosin, Serum (0.1 ml)	AS11 1641	ELISA
Tylosin, Total IgG (0.2 mg)	AS11 1685	ELISA
<i>Yersinia pseudotuberculosis</i>	AS05 057	ICC, IF
PEPC1 Phosphoenolpyruvate carboxylase isoform 1 ** In testing	AS15 2993	IL, WB

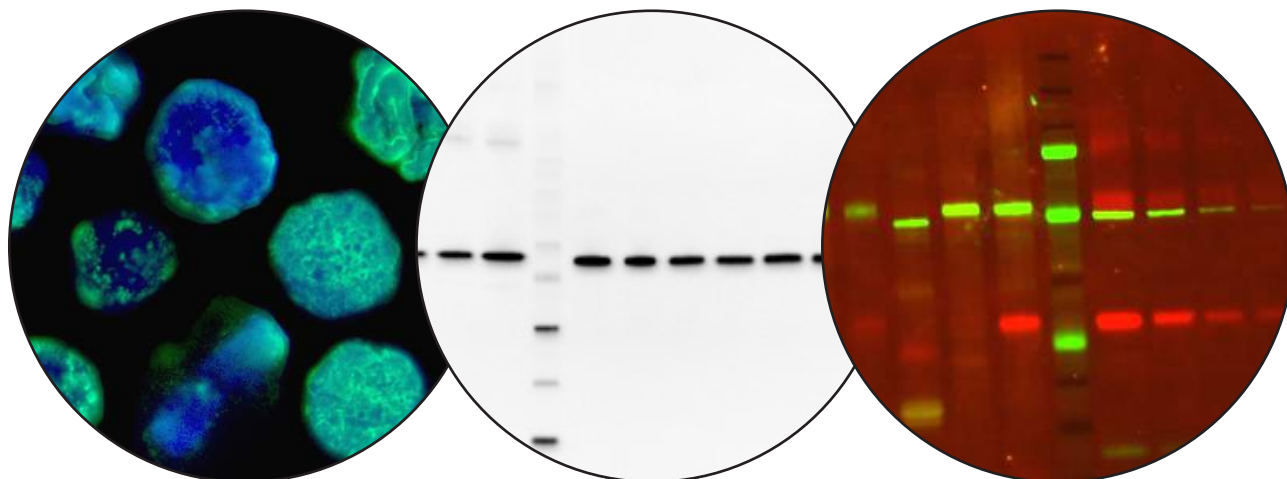
TAG-antibodies

Product name	Product number	Applications
His-tag 6xHis	AS11 1771	Dot, IL, IP, WB
6x Histidine, Biotin Conjugated	AS15 2934	WB
6x Histidine, conjugated to DyLight® 488	AS15 2928	HTS
6x Histidine, conjugated to DyLight® 550	AS15 2929	IL
6x Histidine, conjugated to DyLight® 650	AS15 2933	HTS, IF, IHC, WB
6x Histidine, conjugated to Europium	AS15 2932	HTS
6x Histidine, conjugated to SureLight® R-Phycoerythrin	AS15 2931	CBA, Flow cyt, MA
6x Histidine, HRP conjugated	AS15 2930	WB
6x Histidine, Unconjugated (1 mg)	AS15 2936	CBA, Flow cyt, MA
Cas9 CRISPR-associated endonuclease 9 (monoclonal)	AS17 4124	IF, IP, WB
Cas9 CRISPR-associated endonuclease 9 (polyclonal)	AS16 3690	IL, WB
CFP Cyan Fluorescence Protein (monoclonal)	AS15 3038	Dot, IHC, WB
c-myc, ALP conjugated	AS15 2940	WB
c-myc, Biotin conjugated	AS15 2941	WB
c-myc, DyLight® 488 conjugated	AS15 2945	HTS
c-myc, DyLight® 550 conjugated	AS15 2946	IL, WB
c-myc, DyLight® 650 conjugated	AS15 2942	HTS
c-myc, Europium conjugated	AS15 2943	HTS
c-myc, SureLight® R-Phycoerythrin conjugated	AS15 2944	CBA, Flow cyt
MAC-YFP C-terminal of YFP	AS11 1775	WB
DYKDDDDK (binds to Sigma FLAG®)	AS15 2871	Dot, IHC, IP, WB
DYKDDDDK (binds to Sigma FLAG®) (mouse monoclonal)	AS15 3036	IHC, IP, WB
DYKDDDDK (binds to Sigma FLAG®) (rabbit polyclonal)	AS15 3037	IHC, IP, WB
DYKDDDDK (binds to Sigma FLAG®), DyLight® 488 conjugated	AS15 2950	HTS
DYKDDDDK (binds to Sigma FLAG®), DyLight® 550 conjugated	AS15 2951	IL
DYKDDDDK (binds to Sigma FLAG®), DyLight® 650 conjugated	AS15 2947	HTS
DYKDDDDK (binds to Sigma FLAG®), Europium conjugated	AS15 2948	HTS
DYKDDDDK (binds to Sigma FLAG®), HRP conjugated	AS16 3222	WB
DYKDDDDK (binds to Sigma FLAG®), SureLight® R-Phycoerythrin conjugated	AS15 2949	CBA, Flow cyt, MA
FITC Fluoresceine isothiocyanate	AS16 3978	ELISA, ICC, IHC
GFP Green Fluorescence Protein (affinity purified)	AS15 2987	ELISA, IF, WB
GFP Green Fluorescence Protein (protein A purified)	AS15 3000	ELISA, WB
GFP Green Fluorescence Protein (total IgG)	AS15 2999	ELISA, WB
GFP Green Fluorescence Protein (total IgY)	AS15 2998	ELISA, WB
GFP Green Fluorescence Protein, peroxidase conjugated	AS15 3001	ELISA, IHC, WB
GFP Recombinant GFP protein	AS15 3002	WB
GST conjugated to DyLight® 488	AS15 2915	HTS
GST conjugated to DyLight® 550	AS15 2916	IL
GST conjugated to DyLight® 650	AS15 2912	CBA, FL
GST conjugated to Europium 1024	AS15 2913	HTS

TAG-antibodies

Product name.....	Product number	Applications
GST conjugated to SureLight® R-Phycoerythrin.....	AS15 2914	CBA, Flow cyt, MA
GST-tag (mouse monoclonal).....	AS15 2861	. Dot, IHC, IP, WB
GST-tag (rabbit polyclonal).....	AS17 4147 ELISA, WB
GUS Beta-glucuronidase.....	AS16 3689 WB
HA, conjugated to Alkaline Phosphatase.....	AS15 2921 WB
HA, conjugated to Biotin.....	AS15 2922 WB
HA, conjugated to DyLight® 550.....	AS15 2920 IL
HA, conjugated to DyLight® 650.....	AS15 2925	... Flow cyt , CBA
HA, conjugated to DyLight®488.....	AS15 2919 FL, CBA
HA, conjugated to Europium 1024.....	AS15 2923 HTS
HA, conjugated to HRP.....	AS15 2924 WB
HA, conjugated to SureLight® R-Phycoerythrin.....	AS15 2918	CBA, FL,MA, , MPI
HA, DyLight® 488 conjugated.....	AS15 2959 CBA, Flow cyt
HA, DyLight® 550 conjugated.....	AS15 2960 IL
HA, DyLight® 650 conjugated.....	AS15 2963 CBA, Flow cyt
HA, SureLight® R-Phycoerythrin conjugated.....	AS15 2958	CBA, Flow cyt, MA
HA-tag.....	AS12 2220 WB
His-tag 6xHis (50 µg).....	AS11 1771	... ELISA, Dot, IP
His-tag 6xHis (100 µg).....	AS15 2937	. CBA, FL, MA, MPI
LUC Luciferase.....	AS16 3691 WB
MBP Maltose Binding Protein.....	AS15 3039 ELISA, WB
mCherry.....	AS16 3967 ICC, WB
Myc tag (mouse monoclonal).....	AS15 3035 IP, WB
Myc tag (rabbit polyclonal).....	AS15 3034 ELISA, WB
N-YFP N-terminal of YFP.....	AS11 1776 WB
RFP Red Fluorescent Protein.....	AS15 3028	... ELISA, Dot IP,
S, ALP conjugated.....	AS15 2974 WB
S, Biotin conjugated.....	AS15 2975 WB
S, DyLight® 488 conjugated.....	AS15 2972 CBA, Flow cyt
S, DyLight® 550 conjugated.....	AS15 2973 IL
S, DyLight® 650 conjugated.....	AS15 2970 CBA, Flow cyt
S, SureLight® R-Phycoerythrin conjugated.....	AS15 2971	CBA, Flow cyt, MA
T7, ALP conjugated.....	AS15 2976 WB
T7, Biotin conjugated.....	AS15 2977 WB
T7, DyLight® 488 conjugated.....	AS15 2983 CBA, Flow cyt
T7, DyLight® 550 conjugated.....	AS15 2984 IL
T7, DyLight® 650 conjugated.....	AS15 2978 CBA, Flow cyt
T7, SureLight® R-Phycoerythrin conjugated.....	AS15 2982	CBA, Flow cyt, MA
V5.....	AS15 3027	.. Dot, IHC, IP WB
V5 (mouse monoclonal).....	AS15 3031	... ELISA, IHC, WB
V5, DyLight® 550 conjugated.....	AS15 2967 IL
V5, DyLight® 650 conjugated.....	AS15 2968 CBA, Flow cyt
V5, ALP conjugated.....	AS15 2964 WB
V5, Biotin conjugated.....	AS15 2965 WB
V5, DyLight® 488 conjugated.....	AS15 2966 CBA, Flow cyt
V5, SureLight® R-Phycoerythrin conjugated.....	AS15 2969	CBA, Flow cyt, MA

Secondary antibodies A selection of our product range



Anti-biotin

Product name.....	Product number
Goat anti-biotin, ALP conjugated.....	AS10 1452
Goat anti-biotin, FITC conjugated.....	AS10 1453
Goat anti-biotin, HRP conjugated.....	AS10 1454
Goat anti-Biotin, Affinity purified, Unconjugated.....	AS10 666
Goat anti-Biotin, DyLight® 550 conjugated.....	AS12 1876
Goat anti-Biotin, DyLight® 594 conjugated.....	AS12 1987
Goat anti-Biotin, DyLight® 633 conjugated.....	AS12 2120
Goat anti-Biotin, DyLight® 650 conjugated.....	AS12 2228
Goat anti-Biotin, DyLight® 800 conjugated.....	AS12 2356
Goat anti-Biotin, DyLight® 350 conjugated.....	AS12 2481

Anti-chicken, ALP

Product name.....	Product number
Goat anti-Chicken IgY (H&L), ALP conjugated	AS09 606
Rabbit anti-Chicken IgY (H&L), ALP conjugated.....	AS10 1486

Anti-chicken, Biotinylated

Product name.....	Product number
Goat anti-Chicken IgY (H&L), Biotin conjugated.....	AS09 610
Rabbit anti-Chicken IgY (H&L), Biotin conjugated.....	AS10 1487

Anti-chicken, Fluorescent DyLight®

Product name.....	Product number
Goat anti-Chicken IgY (H&L), DyLight® 350 conjugated.....	AS11 1820
Rabbit anti-Chicken IgY (H&L), DyLight® 350 conjugated.....	AS12 2487
Goat anti-Chicken IgY (H&L), DyLight® 488 conjugated.....	AS09 622
Rabbit anti-Chicken IgY (H&L), DyLight® 488 conjugated.....	AS10 1491
Goat anti-Chicken IgY (H&L), DyLight® 550 conjugated.....	AS11 1822
Goat anti-Chicken IgY (H&L), DyLight® 594 conjugated.....	AS11 1823
Goat anti-Chicken IgY (H&L), DyLight® 633 conjugated.....	AS11 1824
Goat anti-Chicken IgY (H&L), DyLight® 650 conjugated.....	AS11 1825
Rabbit anti-Chicken IgY (H&L), DyLight® 650 conjugated.....	AS12 2234
Goat anti-Chicken IgY (H&L), DyLight® 800 conjugated.....	AS11 1827

Anti-chicken, Fluorescent FITC, TRITC

Product name.....	Product number
Goat anti-Chicken IgY (H&L), TRITC conjugated	AS10 1104
Goat anti-Chicken IgY (H&L), FITC conjugated	AS10 1284
Rabbit anti-Chicken IgY (H&L), FITC conjugated.....	AS10 1488
Rabbit anti-Chicken IgY (H&L), TRITC conjugated.....	AS10 1490

Anti-chicken, HRP

Product name.....	Product number
Goat anti-Chicken IgY (H&L), HRP conjugated.....	AS09 603
Rabbit anti-Chicken IgY (H&L), HRP conjugated.....	AS10 1489

Anti-chicken, Unconjugated

Product name.....	Product number
Rabbit anti-Chicken IgY (H&L), Affinity purified, Unconjugated.....	AS10 1485
Goat anti-Chicken IgY (H&L), Affinity purified, Unconjugated.....	AS10 727

Anti-goat, ALP

Product name.....	Product number
Rabbit anti-Goat IgG (H&L), ALP conjugated	AS09 630
Donkey anti-Goat IgG (H&L), ALP conjugated, highly adsorbed	AS10 1043
Chicken anti-Goat IgG (H&L), ALP conjugated	AS10 1112
Donkey anti-Goat IgG (H&L), ALP conjugated	AS10 1181
RRabbit anti-Goat IgG (H&L), ALP conjugated, highly adsorbed.....	AS10 657

Anti-goat, Biotinylated

Product name.....	Product number
Rabbit anti-Goat IgG (H&L), Biotin conjugated.....	AS09 612
Chicken anti-Goat IgG (H&L), Biotin conjugated, highly adsorbed	AS10 1026
Donkey anti-Goat IgG (H&L), Biotin conjugated	AS10 1305
Rabbit anti-Goat IgG (H&L), Biotin conjugated, highly adsorbed.....	AS10 658

Anti-goat, Fluorescent DyLight®

Product name.....	Product number
Chicken anti-Goat IgG (H&L), DyLight® 350 conjugated.....	AS12 2490
Chicken anti-Goat IgG (H&L), DyLight® 350 conjugated, highly adsorbed.....	AS12 2491
Rabbit anti-Goat IgG (H&L), DyLight® 488 conjugated.....	AS09 623
Chicken anti-Goat IgG (H&L), DyLight® 550 conjugated,highly adsorbed.....	AS12 1885
Rabbit anti-Goat IgG (H&L) , DyLight® 594 conjugated.....	AS12 1999
Rabbit anti-Goat IgG (H&L), DyLight® 633 conjugated.....	AS12 2133
Chicken anti-Goat IgG (H&L), DyLight® 650 conjugated.....	AS12 2251
Rabbit anti-Goat IgG (H&L), DyLight® 800 conjugated.....	AS12 2379

Anti-goat, Fluorescent FITC, TRITC

Product name.....	Product number
Donkey anti-Goat IgG (H&L), TRITC conjugated	AS10 1046
Donkey anti-Goat IgG (H&L), FITC conjugated	AS10 1078
Rabbit anti-Goat IgG (H&L), TRITC conjugated, highly adsorbed.....	AS10 1101
Chicken anti-Goat IgG (H&L), TRITC conjugated	AS10 1137
Rabbit anti-Goat IgG (H&L), FITC conjugated	AS10 1155
Rabbit anti-Goat IgG (H&L), FITC conjugated, highly adsorbed.....	AS10 1271
Rabbit anti-Goat IgG (H&L), TRITC conjugated.....	AS10 943

Anti-goat, HRP

Product name.....	Product number
Donkey anti-Goat IgG (H&L), TRITC conjugated	AS10 1046
Rabbit anti-Goat IgG (H&L), HRP conjugated.....	AS09 605
Chicken anti-Goat IgG (H&L), HRP conjugated.....	AS10 1068
Rabbit anti-Goat IgG (H&L), HRP conjugated, highly adsorbed.....	AS10 659

Anti-goat, Unconjugated

Product name.....	Product number
Donkey anti-Goat IgG (H&L), TRITC conjugated	AS10 1046
Rabbit anti-Goat IgG (H&L), Affinity purified, Unconjugated, highly adsorbed.....	AS10 1061
Donkey anti-Goat IgG (H&L), Affinity purified, Unconjugated.....	AS10 1062
Rabbit anti-Goat IgG (H&L), Affinity purified, Unconjugated.....	AS10 1265

Anti-llama, Biotinylated

Product name.....	Product number
Goat anti-Llama IgG (H&L), Biotin conjugated.....	AS10 1418
Rabbit anti-Llama IgG (H&L), Biotin conjugated.....	AS10 1515

Anti-llama, Fluorescent DyLight®

Product name.....	Product number
Goat anti-Llama IgG (H&L), DyLight® 350 conjugated.....	AS12 2536
Goat anti-Llama IgG (H&L), DyLight® 488 conjugated.....	AS10 1422
Goat anti-Llama IgG (H&L), DyLight® 550 conjugated.....	AS12 1930
Goat anti-Llama IgG (H&L), DyLight® 594 conjugated.....	AS12 2044
Goat anti-Llama IgG (H&L), DyLight® 633 conjugated.....	AS12 2176
Goat anti-Llama IgG (H&L), DyLight® 650 conjugated.....	AS12 2298
Goat anti-Llama IgG (H&L), DyLight® 800 conjugated.....	AS12 2422

Anti-llama, Fluorescent FITC, TRITC

Product name.....	Product number
Goat anti-Llama IgG (H&L), FITC conjugated.....	AS10 1419
Goat anti-Llama IgG (H&L), TRITC conjugated.....	AS10 1421

Anti-llama, HRP

Product name.....	Product number
Goat anti-Llama IgG (H&L), HRP conjugated.....	AS10 1420
Rabbit anti-Llama IgG (H&L), HRP conjugated.....	AS10 1517

Anti-llama, Unconjugated

Product name.....	Product number
Goat anti-Llama IgG (H&L), Affinity purified, Unconjugated.....	AS10 1416
Rabbit anti-Llama IgG (H&L), Affinity purified, Unconjugated.....	AS10 1513

Anti-mouse, ALP

Product name.....	Product number
Rabbit anti-Mouse IgG (H&L), ALP conjugated	AS09 629
Donkey anti-Mouse IgG (H&L), ALP conjugated	AS10 1027
Donkey anti-Mouse IgG (H&L), ALP conjugated, highly adsorbed.....	AS10 1110
Chicken anti-Mouse IgG (H&L), ALP conjugated	AS10 1125
Goat anti-Mouse IgG (H&L), ALP conjugated	AS10 1159

Anti-mouse, Biotinylated

Product name.....	Product number
Rabbit anti-Mouse IgG (H&L), Biotin conjugated.....	AS09 609
Goat anti-Mouse IgG (H&L), Biotin conjugated	AS10 1095
Chicken anti-Mouse IgG (H&L), Biotin conjugated, highly adsorbed.....	AS10 1103
Chicken anti-Mouse IgG (H&L), Biotin conjugated	AS10 1169
Donkey anti-Mouse IgG (H&L), Biotin conjugated	AS10 1225

Anti-mouse, Fluorescent DyLight®

Product name.....	Product number
Donkey anti-Mouse IgG (H&L), DyLight® 350 conjugated.....	AS12 2540
Donkey anti-Mouse IgG (H&L), DyLight® 350 conjugated, highly adsorbed.....	AS12 2541
Goat anti-Mouse IgG (H&L), DyLight® 350 conjugated.....	AS12 2544
Rabbit anti-Mouse IgG (H&L), DyLight® 350 conjugated.....	AS12 2562
Goat anti-Mouse IgG (H&L), DyLight® 488 conjugated.....	AS09 632
Rabbit anti-Mouse IgG (H&L), DyLight® 488 conjugated.....	AS10 999
Llama anti-Mouse IgG (H&L), DyLight® 488 conjugated.....	AS15 2885
Donkey anti-Mouse IgG (H&L), DyLight® 550 conjugated.....	AS12 1934
Goat anti-Mouse IgG (H&L), DyLight® 550 conjugated.....	AS12 1938
Rabbit anti-Mouse IgG (H&L), DyLight® 550 conjugated.....	AS12 1956
Donkey anti-Mouse IgG (H&L), DyLight® 594 conjugated.....	AS12 2048
Goat anti-Mouse IgG (H&L), DyLight® 594 conjugated.....	AS12 2052
Rabbit anti-Mouse IgG (H&L), DyLight® 594 conjugated.....	AS12 2070
Donkey anti-Mouse IgG (H&L), DyLight® 633 conjugated.....	AS12 2180
Goat anti-Mouse IgG (H&L), DyLight® 633 conjugated.....	AS12 2184
Rabbit anti-Mouse IgG (H&L), DyLight® 633 conjugated.....	AS12 2202
Donkey anti-Mouse IgG (H&L), DyLight® 650 conjugated.....	AS12 2302
Goat anti-Mouse IgG (H&L), DyLight® 650 conjugated.....	AS12 2305
Rabbit anti-Mouse IgG (H&L), DyLight® 650 conjugated.....	AS12 2323
Goat anti-Mouse IgG (H&L), DyLight® 800 conjugated.....	AS12 2430
Rabbit anti-Mouse IgG (H&L), DyLight® 800 conjugated.....	AS12 2448

Anti-mouse, Fluorescent FITC, TRITC

Product name.....	Product number
Donkey anti-Mouse IgG (H&L), FITC conjugated, highly adsorbed.....	AS10 1177
Goat anti-Mouse IgG (H&L), TRITC conjugated	AS10 1207
Goat anti-Mouse IgG (H&L), FITC conjugated	AS10 1223
Donkey anti-Mouse IgG (H&L), FITC conjugated	AS10 1285
Donkey anti-Mouse IgG (H&L), TRITC conjugated, highly adsorbed.....	AS10 951
Rabbit anti-Mouse IgG (H&L), TRITC conjugated.....	AS10 957
Donkey anti-Mouse IgG (H&L), TRITC conjugated	AS10 985

Anti-mouse, HRP

Product name.....	Product number
Rabbit anti-Mouse IgG (H&L), HRP conjugated.....	AS09 627
Chicken anti-Mouse IgG (H&L), HRP conjugated.....	AS10 1033
Donkey anti-Mouse IgG (H&L), HRP conjugated, highly adsorbed.....	AS10 1087
Donkey anti-Mouse IgG (H&L), HRP conjugated.....	AS10 1277
Goat anti-Mouse IgG (H&L), HRP conjugated.....	AS11 1772
Llama anti-Mouse IgG (H&L), HRP Conjugated.....	AS15 2886

Anti-mouse, Unconjugated

Product name.....	Product number
Donkey anti-Mouse IgG (H&L), Affinity purified, Unconjugated, highly adsorbed.....	AS10 1082
Donkey anti-Mouse IgG (H&L), Affinity purified, Unconjugated.....	AS10 1255
Goat anti-Mouse IgG (H&L), Affinity purified, Unconjugated.....	AS10 811
Chicken anti-Mouse IgG (H&L), Affinity purified, Unconjugated.....	AS10 818
Rabbit anti-Mouse IgG (H&L), Affinity purified, Unconjugated.....	AS10 820
Llama anti-Mouse IgG (H&L), Affinity purified, Unconjugated.....	AS15 2884

Anti-rabbit, ALP

Product name.....	Product number
Goat anti-Rabbit IgG (H&L), ALP conjugated	AS09 607
Donkey anti-Rabbit IgG (H&L), ALP conjugated, highly adsorbed.....	AS10 1127
Chicken anti-Rabbit IgG (H&L), ALP conjugated	AS10 829
Donkey anti-Rabbit IgG (H&L), ALP conjugated	AS10 841

Anti-rabbit, Biotinylated

Product name.....	Product number
Goat anti-Rabbit IgG (H&L), Biotin conjugated	AS09 608
Goat anti-Rabbit IgG (H&L), Biotin conjugated, highly adsorbed.....	AS10 1055
Sheep anti-Rabbit IgG (H&L), Biotin conjugated.....	AS10 1536
Chicken anti-Rabbit IgG (H&L), Biotin conjugated.....	AS10 830
Donkey anti-Rabbit IgG (H&L), Biotin conjugated	AS10 842

Anti-rabbit, Fluorescent DyLight®

Product name.....	Product number
Goat anti-Rabbit IgG (H&L), DyLight® 350 conjugated.....	AS11 1812
Donkey anti-Rabbit IgG (H&L), DyLight® 350 conjugated.....	AS12 2566
Donkey anti-Rabbit IgG (H&L), DyLight® 350 conjugated, highly adsorbed.....	AS12 2568
Sheep anti-Rabbit IgG (H&L), DyLight® 350 conjugated.....	AS12 2579
Goat anti-Rabbit IgG (H&L), DyLight® 488 conjugated.....	AS09 633
Donkey anti-Rabbit IgG (H&L), DyLight® 488 conjugated.....	AS10 843
Llama anti-Rabbit IgG (H&L), DyLight® 488 conjugated.....	AS15 2839
Goat anti-Rabbit IgG (H&L), DyLight® 550 conjugated.....	AS11 1814
Donkey anti-Rabbit IgG (H&L), DyLight® 550 conjugated.....	AS12 1960
Sheep anti-Rabbit IgG (H&L), DyLight® 550 conjugated.....	AS12 1971
Goat anti-Rabbit IgG (H&L), DyLight® 594 conjugated.....	AS11 1815
Donkey anti-Rabbit IgG (H&L), DyLight® 594 conjugated.....	AS12 2074
Sheep anti-Rabbit IgG (H&L), DyLight® 594 conjugated.....	AS12 2086
Goat anti-Rabbit IgG (H&L), DyLight® 633 conjugated.....	AS11 1816
Donkey anti-Rabbit IgG (H&L), DyLight® 633 conjugated.....	AS12 2206
Sheep anti-Rabbit IgG (H&L), DyLight® 633 conjugated.....	AS12 2217
Donkey anti-Rabbit IgG (H&L), DyLight® 650 conjugated.....	AS12 2327
Goat anti-Rabbit IgG (H&L), DyLight® 650 conjugated.....	AS12 2331
Sheep anti-Rabbit IgG (H&L), DyLight® 650 conjugated.....	AS12 2340
Donkey anti-Rabbit IgG (H&L), DyLight® 800 conjugated.....	AS12 2452
Goat anti-Rabbit IgG (H&L), DyLight® 800 conjugated.....	AS12 2456
Sheep anti-Rabbit IgG (H&L), DyLight® 800 conjugated.....	AS12 2465

Anti-rabbit, Fluorescent FITC, TRITC

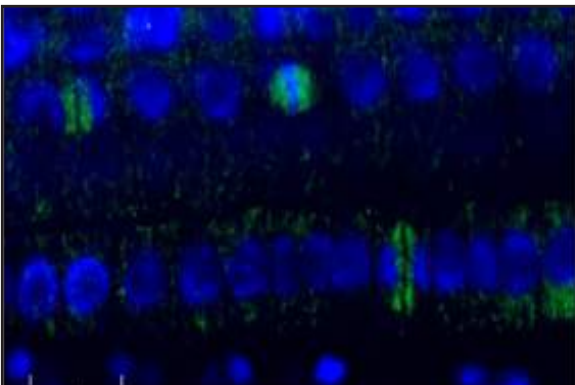
Product name.....	Product number
Donkey anti-Rabbit IgG (H&L), TRITC conjugated, highly adsorbed.....	AS10 1019
Chicken anti-Rabbit IgG (H&L), FITC conjugated.....	AS10 1031
Chicken anti-Rabbit IgG (H&L), TRITC conjugated	AS10 1063
Goat anti-Rabbit IgG (H&L), FITC conjugated,highly adsorbed.....	AS10 1121
Goat anti-Rabbit IgG (H&L), FITC conjugated	AS10 1176
Goat anti-Rabbit IgG (H&L), TRITC conjugated	AS10 1196
Donkey anti-Rabbit IgG (H&L), TRITC conjugated.....	AS10 1269
Donkey anti-Rabbit IgG (H&L), FITC conjugated	AS10 1299
Sheep anti-Rabbit IgG (H&L), FITC conjugated.....	AS10 1537
Sheep anti-Rabbit IgG (H&L), TRITC conjugated.....	AS10 1539

Anti-rabbit, HRP

Product name.....	Product number
Goat anti-Rabbit IgG (H&L), HRP conjugated.....	AS09 602
Donkey anti-Rabbit IgG (H&L), HRP conjugated, highly adsorbed.....	AS10 1008
Sheep anti-Rabbit IgG (H&L), HRP conjugated.....	AS10 1538
Chicken anti-Rabbit IgG (H&L), HRP conjugated	AS10 833
Donkey anti-Rabbit IgG (H&L), HRP conjugated.....	AS10 845
Llama anti-Rabbit IgG (H&L), HRP Conjugated.....	AS15 2841

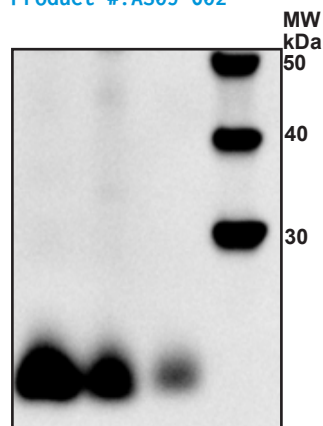
Application example

Product #:AS10 1216



Tubulin beta localization in *A. thaliana* epidermis cells using Agrisera secondary antibody Goat anti-Rabbit IgG (H&L), DyLight® 488 conj. pre-adsorbed (AS10 1216) combined with Agrisera primary anti-Tubulin (AS10 681) antibody, visualized in green.

Product #:AS09 602



WB using Agrisera secondary antibody Goat anti-rabbit, HRP-conj. (AS09 602) combined with Agrisera primary PsaC antibody (AS04 042) on total extract from *H. vulgare* total leaf (1), *Z. mays* (2), *S. oleracea* (3).

Anti-rabbit, Unconjugated

Product name.....	Product number
Donkey anti-Rabbit IgG (H&L), Affinity purified, Unconjugated, highly adsorbed	AS10 1119
Sheep anti-Rabbit IgG (H&L), Affinity purified, Unconjugated.....	AS10 1534
Goat anti-Rabbit IgG (H&L), Affinity purified, Unconjugated.....	AS10 665
Chicken anti-Rabbit IgG (H&L), Affinity purified, Unconjugated.....	AS10 828
Donkey anti-Rabbit IgG (H&L), Affinity purified, Unconjugated.....	AS10 840
Llama anti-Rabbit IgG (H&L), Affinity purified, Unconjugated.....	AS15 2838

Anti-rat, ALP

Product name.....	Product number
Goat anti-Rat IgG (H&L), ALP conjugated	AS09 620
Donkey anti-Rat IgG (H&L), ALP conjugated	AS10 1007
Donkey anti-Rat IgG (H&L), ALP conjugated, highly adsorbed.....	AS10 1016
Chicken anti-Rat IgG (H&L), ALP conjugated	AS10 1170
Rabbit anti-Rat IgG (H&L), ALP conjugated.....	AS10 1521

Anti-rat, Biotinylated

Product name.....	Product number
Donkey anti-Rat IgG (H&L), Biotin conjugated, highly adsorbed.....	AS10 1093
Chicken anti-Rat IgG (H&L), Biotin conjugated	AS10 1194
Goat anti-Rat IgG (H&L), Biotin conjugated	AS10 1210
Donkey anti-Rat IgG (H&L), Biotin conjugated	AS10 1258
Rabbit anti-Rat IgG (H&L), Biotin conjugated.....	AS10 1522

Anti-rat, Fluorescent DyLight®

Product name.....	Product number
Donkey anti-Rat IgG (H&L), DyLight® 488 conjugated.....	AS10 949
Donkey anti-Rat IgG (H&L), DyLight® 350 conjugated.....	AS12 2585
Donkey anti-Rat IgG (H&L), DyLight® 350 conjugated, highly adsorbed.....	AS12 2586
Goat anti-Rat IgG (H&L), DyLight® 350 conjugated.....	AS12 2588
Rabbit anti-Rat IgG (H&L), DyLight® 350 conjugated.....	AS12 2592
Goat anti-Rat IgG (H&L), DyLight® 488 conjugated.....	AS09 638
Rabbit anti-Rat IgG (H&L), DyLight® 488 conjugated.....	AS10 1526
Donkey anti-Rat IgG (H&L), DyLight® 550 conjugated.....	AS12 1974
Goat anti-Rat IgG (H&L), DyLight® 550 conjugated.....	AS12 1977
Rabbit anti-Rat IgG (H&L), DyLight® 550 conjugated.....	AS12 1981
Donkey anti-Rat IgG (H&L), DyLight® 594 conjugated.....	AS12 2089
Goat anti-Rat IgG (H&L), DyLight® 594 conjugated.....	AS12 2092
Rabbit anti-Rat IgG (H&L), DyLight® 594 conjugated.....	AS12 2096
Donkey anti-Rat IgG (H&L), DyLight® 633 conjugated.....	AS12 2236
Goat anti-Rat IgG (H&L), DyLight® 633 conjugated.....	AS12 2239
Rabbit anti-Rat IgG (H&L), DyLight® 633 conjugated.....	AS12 2243
Donkey anti-Rat IgG (H&L), DyLight® 650 conjugated.....	AS12 2343
Goat anti-Rat IgG (H&L), DyLight® 650 conjugated.....	AS12 2346
Rabbit anti-Rat IgG (H&L), DyLight® 650 conjugated.....	AS12 2350
Donkey anti-Rat IgG (H&L), DyLight® 800 conjugated.....	AS12 2468
Goat anti-Rat IgG (H&L), DyLight® 800 conjugated.....	AS12 2471
Rabbit anti-Rat IgG (H&L), DyLight® 800 conjugated.....	AS12 2475

Anti-rat, Fluorescent FITC, TRITC

Product name.....	Product number
Donkey anti-Rat IgG (H&L), TRITC conjugated	AS10 1102
Goat anti-Rat IgG (H&L), FITC conjugated	AS10 1136
Donkey anti-Rat IgG (H&L), FITC conjugated	AS10 1138
Donkey anti-Rat IgG (H&L), TRITC conjugated, highly adsorbed.....	AS10 1178
Chicken anti-Rat IgG (H&L), FITC conjugated	AS10 1186
Chicken anti-Rat IgG (H&L), TRITC conjugated	AS10 1219
Goat anti-Rat IgG (H&L), TRITC conjugated	AS10 1266
Donkey anti-Rat IgG (H&L), FITC conjugated, highly adsorbed.....	AS10 1282
Rabbit anti-Rat IgG (H&L), FITC conjugated.....	AS10 1523
Rabbit anti-Rat IgG (H&L), TRITC conjugated.....	AS10 1525

Anti-rat, HRP

Product name.....	Product number
Donkey anti-Rat IgG (H&L), HRP conjugated, highly adsorbed.....	AS10 1115
Goat anti-Rat IgG (H&L), HRP conjugated.....	AS10 1187
Chicken anti-Rat IgG (H&L), HRP conjugated.....	AS10 1224
Rabbit anti-Rat IgG (H&L), HRP conjugated.....	AS10 1524
Donkey anti-Rat IgG (H&L), HRP conjugated.....	AS10 947

Anti-rat, Unconjugated

Product name.....	Product number
Goat anti-Rat IgG (H&L), Affinity purified, Unconjugated	AS10 1132
Donkey anti-Rat IgG (H&L), Affinity purified, Unconjugated, highly adsorbed.....	AS10 1214
Donkey anti-Rat IgG (H&L), Affinity purified, Unconjugated	AS10 1218
Chicken anti-Rat IgG (H&L), Affinity purified, Unconjugated.....	AS10 1231
Rabbit anti-Rat IgG (H&L), Affinity purified, Unconjugated.....	AS10 1520

Anti-sheep, Biotinylated

Product name.....	Product number
Donkey anti-Sheep IgG (H&L), Biotin conjugated	AS09 611
Donkey anti-Sheep IgG (H&L), Biotin conjugated, highly adsorbed	AS10 956

Anti-sheep, Fluorescent DyLight®

Product name.....	Product number
Donkey anti-Sheep IgG (H&L), DyLight® 350 conjugated.....	AS12 2594
Donkey anti-Sheep IgG (H&L), DyLight® 488 conjugated.....	AS09 631
Donkey anti-Sheep IgG (H&L), DyLight® 488 conjugated, highly adsorbed.....	AS10 1257
Donkey anti-Sheep IgG (H&L), DyLight® 550 conjugated.....	AS12 1983
Donkey anti-Sheep IgG (H&L), DyLight® 594 conjugated.....	AS12 2098
Donkey anti-Sheep IgG (H&L), DyLight® 633 conjugated.....	AS12 2245
Donkey anti-Sheep IgG (H&L), DyLight® 650 conjugated.....	AS12 2352
Donkey anti-Sheep IgG (H&L), DyLight® 800 conjugated.....	AS12 2477

Anti-sheep, Fluorescent FITC, TRITC

Product name.....	Product number
Donkey anti-Sheep IgG (H&L), FITC conjugated, highly adsorbed.....	AS10 1024
Donkey anti-Sheep IgG (H&L), TRITC conjugated	AS10 1098
Donkey anti-Sheep IgG (H&L), TRITC conjugated, highly adsorbed.....	AS10 1134
Donkey anti-Sheep IgG (H&L), FITC conjugated	AS10 1171

Anti-sheep, HRP

Product name.....	Product number
Donkey anti-Sheep IgG (H&L), HRP conjugated.....	AS09 604
Donkey anti-Sheep IgG (H&L), HRP conjugated, highly adsorbed.....	AS10 1160

Anti-sheep, Unconjugated

Product name.....	Product number
Donkey anti-Sheep IgG (H&L), Affinity purified, Unconjugated.....	AS10 1000
Donkey anti-Sheep IgG (H&L), Affinity purified, Unconjugated, highly adsorbed.....	AS10 1292

Blocking/control

Product name.....	Product number
Chicken normal serum (unspecified gender) (10 ml).....	AS10 1556
Chicken Ig fraction (10 mg).....	AS10 863
Donkey normal serum (10 ml).....	AS10 1564
Goat normal serum (10 ml).....	AS10 1548
Goat Ig fraction.....	AS10 874
Goat purified IgG (10 mg).....	AS10 875
Guinea Pig normal serum (5 ml).....	AS10 1558
Guinea pig Ig fraction.....	AS10 870
Horse normal serum (10 ml).....	AS10 1562
Horse Ig fraction.....	AS10 866
Llama Ig Fraction.....	AS15 2842
Llama IgG Purified.....	AS15 2844
Mouse normal serum (5 ml).....	AS10 1544
Mouse Ig fraction.....	AS10 911
Pig (Swine) normal serum (10 ml).....	AS10 1566
Rabbit normal serum (10 ml).....	AS10 1546
Rabbit Ig fraction.....	AS10 915
Rabbit purified IgG (10 mg).....	AS10 916
Rat normal serum (5 ml).....	AS10 1552
Rat Ig fraction.....	AS10 923
Sheep normal serum (10 ml).....	AS10 1550
Sheep Ig fraction.....	AS10 927

Products ** In testing

These products are being tested by at least two independent laboratories before we make them available. For information about the current state of validation, or to obtain a test sample, please contact us at support@agrisera.com

Product information

For the latest information and pricing of Agrisera antibodies, please visit our website www.agrisera.com or contact us at orders@agrisera.com

Appendix - applications

Application name.....	Abbreviation
Antibody Column.....	AC
Blue Native PAGE.....	BN-PAGE
Cell Based Assays.....	CBA
Dot blot.....	Dot
Enzyme-Linked Immunosorbent Assay.....	ELISA
Flow cytometry.....	Flowcyt
Fluorescence polarization.....	FPIA
ImmunoAffinity Chromatography.....	IAC
ImmunoCytoChemistry.....	ICC
Immunodifusion.....	ID
ImmunoFluorescence.....	IF
ImmunoGold.....	IG
ImmunoHistoChemistry.....	IHC
ImmunoLocalization.....	IL
ImmunoPrecipitation.....	IP
Immunosensor Detection.....	ID
Immuno-spin Trapping.....	IT
indirect ELISA.....	i-ELISA
Microarrays.....	MA
Microplate applications.....	MPI
Neutralization Assay.....	NeA
RadioImmunoAssay.....	RIA
RNA Immunoprecipitation.....	RIP
Surface plasmon resonance.....	SPR
Tissue Printing.....	TP
Western Blot.....	WB

Appendix - conjugations

Application name.....	Abbreviation
Alkaline phosphatase conjugated.....	ALP
Fluorescein-5-isothiocyanate conjugated.....	FITC
Fluorescent conjugates for western blot and immunolocalization studies.....	DyLight®
Horseradish peroxidase conjugated	HRP
Tetramethylrhodamine-5-isothiocyanate.....	TRITC

Contact Agrisera

Catalogue antibodies: orders@agrisera.com
Antibody production: info@agrisera.com
Technical support: support@agrisera.com
Phone: +46 935 33 000
www.agrisera.com

Distributors of Agrisera

Agrisera has distributors all around the world.

Australia | Brazil | Canada | China | Czech Republic | Egypt
France | Germany | India | Iran | Israel | Italy | Japan | Korea
New Zealand | Nigeria | Russia | Serbia | Singapore | South Africa
Spain | Taiwan | Turkey | Netherlands/Benelux | UK/Ireland | USA

