

## LOADING CONTROL ANTIBODY CITATIONS (PARTIAL)

PMID	Title	Journal	IF	Cat.No.	Product Name
33790463	Fertilized egg cells secrete endopeptidases to avoid polytubey	Nature	69.504	AC002	GAPDH Mouse mAb
34062120	TRIM7 inhibits enterovirus replication and promotes emergence of a viral variant with increased pathogenicity	Cell	66.85	AC002	GAPDH Mouse mAb
30458784	Invasion-related circular RNA circFNDC3B inhibits bladder cancer progression through the miR-1178-3p/G3BP2/SRC/FAK axis.	Molecular cancer	41.444	AC002	GAPDH Mouse mAb
32238924	U1 snRNP regulates chromatin retention of noncoding RNAs	Nature	69.504	AC004	β-Actin Mouse mAb
33991488	Mouse totipotent stem cells captured and maintained through spliceosomal repression	Cell	66.85	AC004	β-Actin Mouse mAb
30729032	A chemical approach for global protein knockdown from mice to non-human primates.	Cell discovery	38.079	AC004	β-Actin Mouse mAb
34759281	Evolutionary metabolic landscape from preneoplasia to invasive lung adenocarcinoma	Nat Commun	17.694	AC012	α-Tubulin Mouse mAb
30646747	Hyperglycemia-Driven Inhibition of AMP-Activated Protein Kinase α2 Induces Diabetic Cardiomyopathy by Promoting Mitochondria-Associated Endoplasmic Reticulum Membranes In Vivo.	Circulation	39.918	AC021	β-Tubulin Mouse mAb
33020597	The piRNA CHAPIR regulates cardiac hypertrophy by controlling METTL3-dependent N 6-methyladenosine methylation of Parp10 mRNA	Nat Cell Biol	28.213	AC021	β-Tubulin Mouse mAb
30467143	Maternal Hluwa dictates the embryonic body axis through β-catenin in vertebrates.	Science	63.714	AC026	β-Actin Rabbit mAb (High Dilution)
30030520	DNA damage triggers tubular endoplasmic reticulum extension to promote apoptosis by facilitating ER-mitochondria signaling.	Cell Res	46.297	AC026	β-Actin Rabbit mAb (High Dilution)
32807841	Active RNA interference in mitochondria	Cell Res	46.297	AC026	β-Actin Rabbit mAb (High Dilution)
33603116	Coinfection with influenza A virus enhances SARS-CoV-2 infectivity	Cell Res	46.297	AC026	β-Actin Rabbit mAb (High Dilution)
32049046	Direct Phosphorylation and Stabilization of MYC by Aurora B Kinase Promote T-cell Leukemogenesis	Cancer Cell	38.585	AC026	β-Actin Rabbit mAb (High Dilution)
32963806	Dysfunction of dimorphic sperm impairs male fertility in the silkworm	Cell Discov	38.079	AC026	β-Actin Rabbit mAb (High Dilution)
34146477	Tripartite motif 16 ameliorates nonalcoholic steatohepatitis by promoting the degradation of phospho-TAK1	Cell Metab	31.373	AC026	β-Actin Rabbit mAb (High Dilution)
33811821	Creatine promotes cancer metastasis through activation of Smad2/3	Cell Metab	31.373	AC026	β-Actin Rabbit mAb (High Dilution)
32355287	ERCC6L2 promotes DNA orientation-specific recombination in mammalian cells	Cell Res	46.297	AC028	HRP-conjugated β-Actin Rabbit mAb
32499643	RIC-seq for global in situ profiling of RNA-RNA spatial interactions	Nature	69.504	AC033	GAPDH Mouse mAb (High Dilution)
32111972	Rett syndrome-causing mutations compromise MeCP2-mediated liquid-liquid phase separation of chromatin	Cell Res	46.297	AC033	GAPDH Mouse mAb (High Dilution)
32839552	Myofiber necroptosis promotes muscle stem cell proliferation via releasing Tenascin-C during regeneration	Cell Res	46.297	AC033	GAPDH Mouse mAb (High Dilution)
33811821	Creatine promotes cancer metastasis through activation of Smad2/3	Cell Metab	31.373	AC033	GAPDH Mouse mAb (High Dilution)
35079145	DOCK2 regulates antifungal immunity by regulating RAC GTPase activity	Cellular & molecular immunology	22.096	A19056	GAPDH Rabbit mAb
34175897	TCF3 is epigenetically silenced by EZH2 and DNMT3B and functions as a tumor suppressor in endometrial cancer	Cell Death Differ	12.067	A12289	β-Tubulin Rabbit mAb

## TAG ANTIBODY CITATIONS (PARTIAL)

PMID	Title	Journal	IF	Cat.No.	Product Name
34352216	A calmodulin-binding transcription factor links calcium signaling to antiviral RNAi defense in plants	Cell Host Microbe	31.316	AE001	Mouse anti GST-Tag mAb
33483504	Emr1 regulates the number of foci of the endoplasmic reticulum-mitochondria encounter structure complex	Nat Commun	17.694	AE001	Mouse anti GST-Tag mAb
30467143	Maternal Hluwa dictates the embryonic body axis through β-catenin in vertebrates.	Science	63.714	AE003	Mouse anti His-Tag mAb
34491908	CD146 bound to LCK promotes T cell receptor signaling and antitumor immune responses in mice	The Journal of clinical investigation	19.456	AE003	Mouse anti His-Tag mAb

PMID	Title	Journal	IF	Cat.No.	Product Name
32422188	The miR319-Targeted GHTCP4 Promotes the Transition from Cell Elongation to Wall Thickening in Cotton Fiber	Molecular plant	21.949	AE005	Mouse anti DDDDK-Tag mAb
31291457	A PARP1-BRG1-SIRT1 axis promotes HR repair by reducing nucleosome density at DNA damage sites.	Nucleic Acids Res	19.16	AE005	Mouse anti DDDDK-Tag mAb
33790463	Fertilized egg cells secrete endopeptidases to avoid polytubey	Nature	49.96	AE008	Mouse anti HA-Tag mAb
30578854	Reversible Histone H2B Monoubiquitination Fine-tunes Abscisic Acid Signaling and Drought Response in Rice.	Molecular plant	21.949	AE008	Mouse anti HA-Tag mAb
33296677	The ZATT-TOP2A-PICH Axis Drives Extensive Replication Fork Reversal to Promote Genome Stability	Mol Cell	19.328	AE008	Mouse anti HA-Tag mAb
32049046	Direct Phosphorylation and Stabilization of MYC by Aurora B Kinase Promote T-cell Leukemogenesis	Cancer Cell	31.743	AE010	Mouse anti Myc-Tag mAb
32504578	Jasmonate Signaling Enhances RNA Silencing and Antiviral Defense in Rice	Cell host & microbe	31.316	AE010	Mouse anti Myc-Tag mAb
28418038	5-methylcytosine promotes mRNA export - NSUN2 as the methyltransferase and ALYREF as an m(5)C reader	Cell Res	46.297	AE012	Mouse anti GFP-Tag mAb
35277482	ALKBH3-dependent m 1 A demethylation of Aurora A mRNA inhibits ciliogenesis	Cell discovery	38.079	AE012	Mouse anti GFP-Tag mAb
31706031	Arabidopsis ECAP is a New Adaptor Protein that Connects JAZ Repressors with the TPR2 Co-repressor to Suppress Jasmonate-Responsive Anthocyanin Accumulation	Molecular Plant	21.949	AE028	HRP-conjugated Mouse anti His-Tag mAb
34953386	Radioactive nano-oxygen generator enhance anti-tumor radio-immunotherapy by regulating tumor microenvironment and reducing proliferation	Biomaterials	15.304	AE070	Myc-Tag Rabbit mAb
34491908	CD146 bound to LCK promotes T cell receptor signaling and antitumor immune responses in mice	The Journal of clinical investigation	19.456	AE016	Mouse anti MBP-Tag mAb
30297778	A novel class of microRNA-recognition elements that function only within open reading frames	Nature Structural & Molecular Biology	15.369	AE002	Mouse anti mCherry-Tag mAb

## SECONDARY ANTIBODY CITATIONS (PARTIAL)

PMID	Title	Journal	IF	Cat.No.	Product Name
34665481	Engineering Extracellular Vesicles Enriched with Palmitoylated ACE2 as COVID-19 Therapy	Adv Mater	32.086	AS001	FITC Goat Anti-Mouse IgG (H+L)
34837059	Receptome profiling identifies KREMEN1 and ASGR1 as alternative functional receptors of SARS-CoV-2	Cell Res	46.297	AS002	HRP Goat Anti-Human IgG (H+L)
33991488	Mouse totipotent stem cells captured and maintained through spliceosomal repression	Cell	66.85	AS003	HRP Goat Anti-Mouse IgG (H+L)
33568427	Inflammatory cell-derived CXCL3 promotes pancreatic cancer metastasis through a novel myofibroblast-hijacked cancer escape mechanism	Gut	31.793	AS003	HRP Goat Anti-Mouse IgG (H+L)
32183950	ADORA1 Inhibition Promotes Tumor Immune Evasion by Regulating the ATF3-PD-L1 Axis	Cancer Cell	38.585	AS003	HRP Goat Anti-Mouse IgG (H+L)
33718672	Three-dimensional (3D) hydrogel serves as a platform to identify potential markers of chondrocyte dedifferentiation by combining RNA sequencing	Bioact Mater	16.874	AS011	FITC Goat Anti-Rabbit IgG (H+L)
34709882	NIN-like protein transcription factors regulate leghemoglobin genes in legume nodules	Science	63.714	AS014	HRP Goat Anti-Rabbit IgG (H+L)
34341487	SDX on the X chromosome is required for male sex determination	Cell Res	46.297	AS014	HRP Goat Anti-Rabbit IgG (H+L)
31409785	Chromatin loops associated with active genes and heterochromatin shape rice genome architecture for transcriptional regulation.	Nature communications	17.694	AS026	TRITC Goat Anti-Mouse IgG (H+L)
34784980	Fecal microbiota transplantation protects rotenone-induced Parkinson's disease mice via suppressing inflammation mediated by the lipopolysaccharide-TLR4 ...	Microbiome	16.837	AS031	HRP Donkey Anti-Goat IgG (H+L)
34665481	Engineering Extracellular Vesicles Enriched with Palmitoylated ACE2 as COVID-19 Therapy	Adv Mater	32.086	AS040	Rhodamine (TRITC) Goat Anti-Rabbit IgG (H+L)
31247479	Regulation of an osteon-like concentric microgrooved surface on osteogenesis and osteoclastogenesis.	Biomaterials	15.304	AS061	HRP-conjugated AffiniPure Mouse Anti-Rabbit IgG Light Chain
31859605	Genetic manipulation of porcine deltacoronavirus reveals insights into NS6 and NS7 functions: a novel strategy for vaccine design	Emerging Microbes & Infections	19.568	AS064	HRP-conjugated Goat Anti-Mouse IgG Heavy Chain
33042753	TRADES: Targeted RNA Demethylation by SunTag System	Adv Sci	17.521	AS071	Goat Anti-Mouse IgG (H+L)



Leader in Biomolecular Solutions for Life Science

Cell Biology  
Research Tools

Loading Control·Secondary Antibody·Tag Antibody·Protein Ladder·Organelle and Subcellular Markers

## LOADING CONTROL ANTIBODY

Category	Cat.No.	Product Name	Application	Reactivity	Citations
Whole cell/ Cytoplasm	AC026	β-Actin Rabbit mAb (High Dilution)	WB	Human,Mouse,Rat,Chicken,Zebrafish,Pig	1145
	AC038	β-Actin Rabbit mAb	WB	Human,Mouse,Rat,Chicken,Zebrafish,Pig	43
	AC004	β-Actin Mouse mAb	IF/ICC,WB	Human,Mouse,Rat	245
	AC028	HRP-conjugated β-Actin Rabbit mAb	WB	Human,Mouse,Rat,Chicken,Zebrafish,Pig	33
	AC043	HRP-conjugated β-Actin Mouse mAb	WB	Human,Mouse,Rat	/
	AC009	Actin (Plant specific) Mouse mAb	IF/ICC,WB	Various Plants	38
	AC036	GAPDH (Human Specific) Rabbit mAb	IF/ICC,WB	Human	12
	A19056	GAPDH Rabbit mAb	IF/ICC,IHC,WB	Human,Mouse,Rat	97
	AC002	GAPDH Mouse mAb	IF/ICC,IHC,WB	Human,Mouse,Rat	533
	AC033	GAPDH Mouse mAb (High Dilution)	IF/ICC,IHC,WB	Human,Mouse,Rat	142
	AC035	HRP-conjugated GAPDH Mouse mAb	WB	Human,Mouse,Rat	13
	AC039	Alpha-tubulin (Ubiquitous) chain Rabbit mAb	IF/ICC,IHC,WB	Human,Mouse,Rat	/
	AC012	α-Tubulin Mouse mAb	IF/ICC,IHC IP,WB	Human,Mouse,Rat	48
A12289	β-Tubulin Rabbit mAb	IF/ICC,IP,WB	Human,Mouse,Rat	16	
AC021	β-Tubulin Mouse mAb	IF/ICC,IHC IP,WB	Human,Mouse,Rat,Hamster,Monkey,Goat Chlamydomonas Reinhardtii	42	
AC030	HRP-conjugated β-Tubulin Mouse mAb	WB	Human,Mouse,Rat	5	
Whole blood/ Plasma/Serum	A11625	Albumin Rabbit mAb	WB	Human,Mouse,Rat,Cow	1
	A19130	Transferrin Rabbit mAb	IHC,WB	Human	/
Nucleus	A17562	Histone H3 Rabbit mAb	ChIP,IF/ICC IHC,WB	Human,Mouse,Rat,Oryza sativa	5
	A12427	PCNA Rabbit mAb	IF/ICC,IHC IP,WB	Human,Mouse,Rat,African green monkey	14
Mitochondria	A11631	COX IV Rabbit mAb	IHC,WB	Human,Mouse,Rat	4
	A4912	[KO Validated] Cytochrome C Rabbit mAb	IHC,WB	Human,Mouse,Rat	10
	A19707	VDAC1 Rabbit mAb	IF/ICC,IHC,WB	Human,Mouse,Rat	14



## SECONDARY ANTIBODY

Cat.No.	Product Name	Host species	Application	Citations
AS017	AP Goat Anti-Mouse IgG (H+L)	Goat	WB	/
AS009	AP Goat Anti-Rabbit IgG (H+L)	Goat	WB	1
AS031	HRP Donkey Anti-Goat IgG (H+L)	Donkey	IHC,WB	7
AS033	HRP Donkey Anti-Mouse IgG (H+L)	Donkey	IHC,WB	/
AS038	HRP Donkey Anti-Rabbit IgG (H+L)	Donkey	IHC,WB	8
AS025	HRP Goat Anti-Guinea Pig IgG (H+L)	Goat	IHC,WB	5
AS002	HRP Goat Anti-Human IgG (H+L)	Goat	IHC,WB	15
AS003	HRP Goat Anti-Mouse IgG (H+L)	Goat	WB,ELISA	487
AS014	HRP Goat Anti-Rabbit IgG (H+L)	Goat	WB,ELISA	872
AS028	HRP Goat Anti-Rat IgG (H+L)	Goat	WB	8
AS004	HRP Goat Anti-Swine IgG (H+L)	Goat	IHC,WB	2
AS030	HRP Rabbit Anti-Chicken IgY (IgG) (H+L)	Rabbit	IHC,WB,ELISA	/
AS006	HRP Rabbit Anti-Camelid VHH Antibody	Rabbit	WB	1
AS029	HRP Rabbit Anti-Goat IgG (H+L)	Rabbit	IHC,WB	14
AS023	HRP Rabbit Anti-Sheep IgG (H+L)	Rabbit	IHC,WB	1
AS061	HRP-conjugated AffiniPure Mouse Anti-Rabbit IgG Light Chain	Mouse	WB	29
AS062	HRP-conjugated AffiniPure Goat Anti-Mouse IgG Light Chain	Goat	WB	12
AS063	HRP-conjugated Goat Anti-Rabbit IgG Heavy Chain	Goat	WB	23
AS064	HRP-conjugated Goat Anti-Mouse IgG Heavy Chain	Goat	WB	18
AS065	HRP Goat Anti-Mouse IgG2a	Goat	WB,ELISA	9
AS066	HRP Goat Anti-Mouse IgG1	Goat	WB,ELISA	8
AS079	HRP-conjugated AffiniPure Mouse Anti-Rabbit IgG (H+L)	Mouse	WB	/
AS053	ABflo® 488-conjugated Goat Anti-Rabbit IgG (H+L)	Goat	IF/ICC,FC	38
AS058	ABflo® 555-conjugated Goat Anti-Rabbit IgG (H+L)	Goat	IF/ICC,FC	2
AS008	Cy3 Goat Anti-Mouse IgG (H+L)	Goat	IF/ICC,FC	27
AS007	Cy3 Goat Anti-Rabbit IgG (H+L)	Goat	IF/ICC,FC	58
AS015	Cy3 Rabbit Anti-Goat IgG (H+L)	Rabbit	IF/ICC,FC	3
AS032	FITC Donkey Anti-Goat IgG (H+L)	Donkey	IF/ICC,FC	/
AS042	FITC Donkey Anti-Rabbit IgG (H+L)	Donkey	IF/ICC,FC	1
AS001	FITC Goat Anti-Mouse IgG (H+L)	Goat	IF/ICC,FC	52
AS011	FITC Goat Anti-Rabbit IgG (H+L)	Goat	IF/ICC,FC	93
AS019	FITC Goat Anti-Rat IgG (H+L)	Goat	IF/ICC,FC	/
AS024	FITC Rabbit Anti-Goat IgG (H+L)	Rabbit	IF/ICC,FC	4
AS040	Rhodamine (TRITC) Goat Anti-Rabbit IgG (H+L)	Goat	IF/ICC,FC	14
AS022	Rhodamine Goat Anti-Rat IgG (H+L)	Goat	IF/ICC,FC	/
AS026	TRITC Goat Anti-Mouse IgG (H+L)	Goat	IF/ICC,FC	7

## IP CONTROL IGG

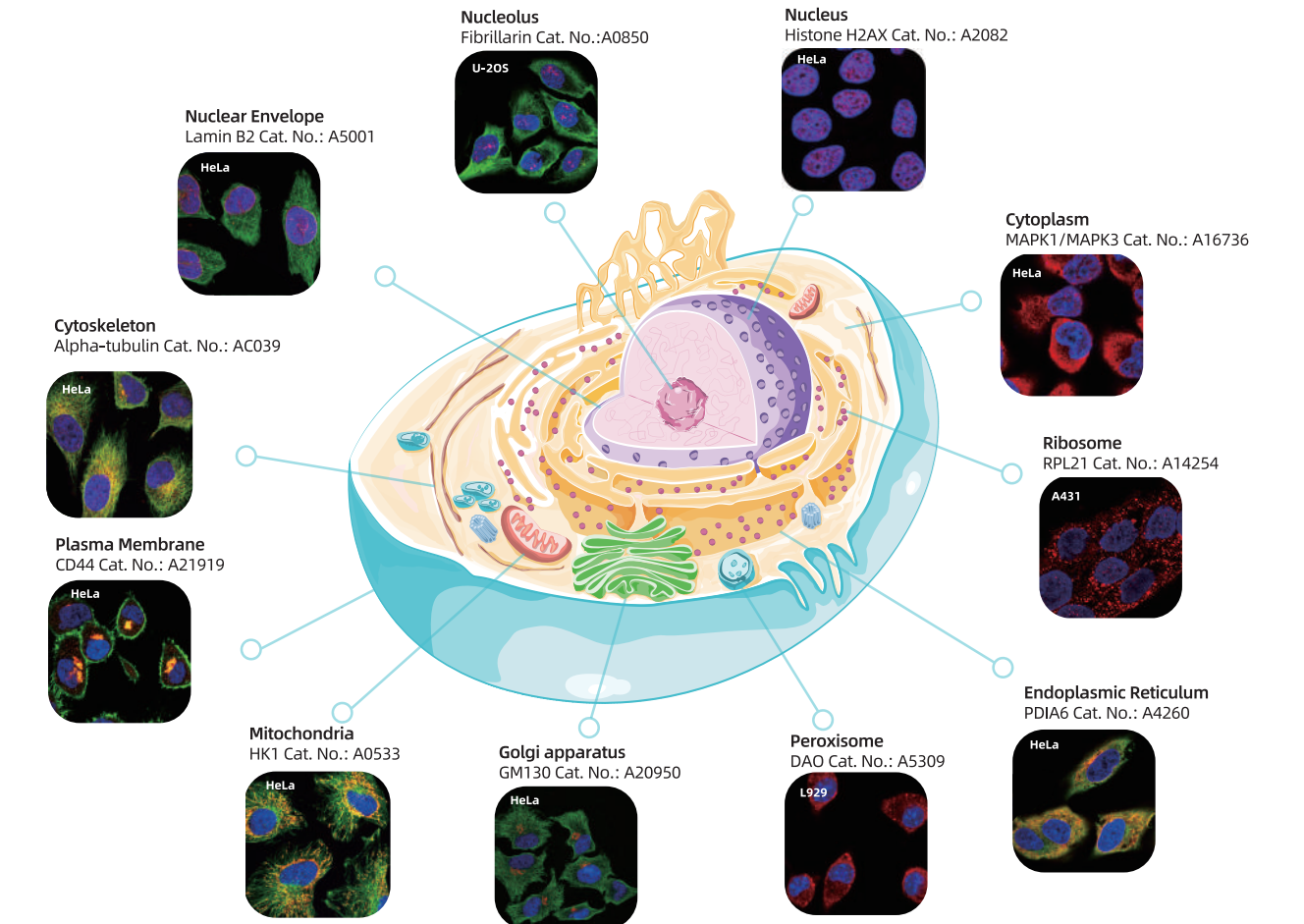
Cat.No.	Product Name	Host species	Application	Citations
AC011	Mouse Control IgG	Mouse	IP	36
AC005	Rabbit Control IgG	Rabbit	ChIP,IP	96
A22069	ABflo® 488 Rabbit IgG isotype control	Rabbit	FC	1
A22070	ABflo® 647 Rabbit IgG isotype control	Rabbit	FC	/

## TAG ANTIBODY

Cat.No.	Product Name	Host species	Application	Citations
AE092	DDDDK-Tag Rabbit mAb	Rabbit	IF/ICC,FC,IP,WB	6
AE004	Rabbit anti DDDDK-Tag pAb	Rabbit	IF/ICC,IHC,IP,WB	/
AE005	Mouse anti DDDDK-Tag mAb	Mouse	IF/ICC,IHC,IP,WB	114
AE061	Affinity Gel-conjugated Mouse anti DDDDK-Tag mAb	Mouse	IP	/
AE037	Magnetic Beads-conjugated Mouse anti DDDDK-Tag mAb	Mouse	IP	1
AE024	HRP-conjugated Mouse anti DDDDK-Tag mAb	Mouse	WB	3
AE077	Rabbit anti GST-Tag mAb	Rabbit	IP,WB	/
AE006	Rabbit anti GST-Tag pAb	Rabbit	IP,WB	/
AE001	Mouse anti GST-Tag mAb	Mouse	IP,WB	43
AE027	HRP-conjugated Mouse anti GST-Tag mAb	Mouse	WB	1
AE078	Rabbit anti GFP-Tag mAb	Rabbit	IF/ICC,WB	/
AE012	Mouse anti GFP-Tag mAb	Mouse	IF/ICC,WB	115
AE064	Affinity Gel-conjugated Mouse anti GFP-Tag mAb	Mouse	IP	1
AE031	HRP-conjugated Rabbit anti GFP-Tag mAb	Rabbit	WB	/
AE074	Anti-GFP (Nanobody) Agarose Beads	Alpaca	ChIP,RIP,CoIP,IP	5
AE079	Anti-GFP (Nanobody) Magnetic Beads	Alpaca	ChIP,RIP,CoIP,IP	/
AE036	Rabbit anti HA-Tag pAb	Rabbit	IF/ICC,WB	/
AE008	Mouse anti HA-Tag mAb	Mouse	IF/ICC,IP,WB	85
AE065	Mouse anti HA-Tag mAb	Mouse	IP,WB	/
AE059	Affinity Gel-conjugated Mouse anti HA-Tag mAb	Mouse	IP	/
AE025	HRP-conjugated Mouse anti HA-Tag mAb	Mouse	WB	1
AE086	Rabbit anti His-tag mAb	Rabbit	IF/ICC,IP,WB	/
AE068	Rabbit anti His-Tag pAb	Rabbit	IF/ICC,IP,WB	/
AE003	Mouse anti His-Tag mAb	Mouse	IP,WB	94
AE028	HRP-conjugated Mouse anti His-Tag mAb	Mouse	WB	9
AE070	Myc-Tag Rabbit mAb	Rabbit	IF/ICC,FC,IP,WB	14
AE009	Rabbit anti Myc-Tag pAb-C-terminal	Rabbit	IF/ICC,IP,WB	/
AE010	Mouse anti Myc-Tag mAb	Mouse	IP,WB	58
AE038	Mouse anti MYC-Tag mAb	Mouse	IF/ICC,FC,IP,WB	7
AE060	Affinity Gel-conjugated Mouse anti Myc-Tag mAb	Mouse	IP	2
AE026	HRP-conjugated Mouse anti Myc-Tag mAb	Mouse	WB	2
AE016	Mouse anti MBP-Tag mAb	Mouse	WB	7
AE075	HRP-conjugated Mouse anti MBP-Tag	Mouse	WB	/
AE071	Rabbit anti V5-Tag pAb	Rabbit	WB	/
AE089	Rabbit anti V5-Tag mAb	Rabbit	IF/ICC,IP,WB	/
AE017	Mouse anti V5-Tag mAb	Mouse	IF/ICC,IP,WB	3
AE002	Mouse anti mCherry-Tag mAb	Mouse	IF/ICC,WB	11
AE018	Mouse anti T7-Tag mAb	Mouse	WB	/
AE020	Mouse anti RFP-Tag mAb	Mouse	WB	9
AE021	Mouse anti TAP-Tag mAb	Mouse	WB	/
AE023	Mouse anti Trx-Tag mAb	Mouse	WB	/
AE066	Mouse anti Strep II-Tag mAb	Mouse	WB	2

## ANTIBODIES FOR ORGANELLE AND SUBCELLULAR STRUCTURE

Organelle and subcellular marker antibodies are commonly used tools in cell biology research. The morphological structure of organelles can be observed by immunofluorescence (IF) labeling technology, which plays an important role in understanding the subcellular localization of proteins, exploring the biological functions of proteins, and the role of organelle proteins in normal or disease models. Antibodies are used to detect the exact location and specificity of the protein of interest under study. In addition, characterizing a new protein also requires knowing its localization, and using markers of known localization as a reference is a very useful strategy; Moreover, marker antibodies are also used in Western blotting (WB) experiments of organelle separation extracts as a positive control to ensure whether the organelles are successfully extracted.



## COLORMIXED PROTEIN MARKER

Protein Marker (Ladder) is a protein standard, which is commonly used in WB (western blot) experiments as a standard for protein molecular weight. The experimental results are more convincing only if the ladder is accurate. In addition, the protein ladder can also verify whether the electrophoresis and the membrane transfer are successful. According to market demand, AbClonal launched a high-quality Colormixed Protein Marker (Cat. No. RM19001), which uses ultra-pure, precision-calibrated and pre-stained three-color protein as a reference, which can be directly loaded. The concentration of each standard protein is 0.1-0.4mg/mL, the band is bright and clear, and the coverage is wide. It can monitor the electrophoresis process, evaluate the transfer efficiency, and accurately locate the target protein in experiments such as PAGE and WB.

